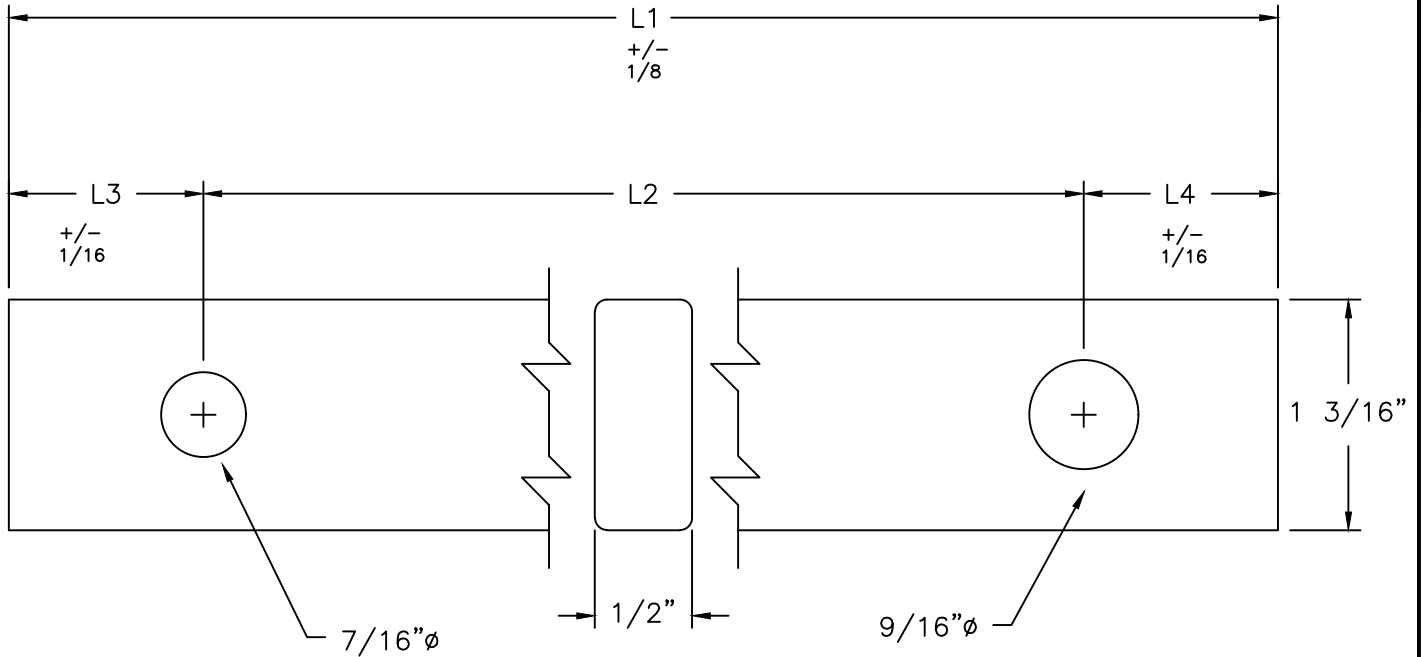


CATALOG NUMBER	LENGTHS (IN)			
	L1	L2	L3	L4
CRB-29	29	26	7/8"	1 7/8"



NOTES:

1. MATERIAL - POLYESTER FIBERGLASS
2. FINISH - VEIL COATING
3. EDGES TO HAVE 1/16"R.

NO.	DATE	DESCRIPTION	BY
5	9/08/22	changed Hole measurement	BHB
4	7/20/20	REMOVED CRB28 - OBSOLETE	MBG
3	1/27/17	ADDED CRB-31, MADE DRAWING FOR ALL SIZES CRB-28: L1 USED TO BE 28", L3 USED TO BE 1.0"	MBG
2	2/11/04	Added Hole Location Tolerance	MW
1	9/16/99	REDRAWN IN AUTOCAD	MW

PROPRIETARY

This information is confidential and is the property of Maclean Power Systems. It may not be made public or reproduced except that the customer may make copies for use solely in the installation, maintenance, and operation of products supplied by Maclean power systems.

MacLean Power Systems

Continental Electric

PO Box 835, Trussville, AL 35173
Phone: (205)655-7400 Fax: (205)655-3530

DRAWN BY: MAW

APPROVED BY:

CHECKED BY:

SCALE: N.T.S.

FIBERGLASS CROSSARM BRACE

CATALOG NUMBER: CRB-L1

DATE: 9/16/99

DRAWING NO: CEA-1536

SH: R/5

OF: