

REVISIONS

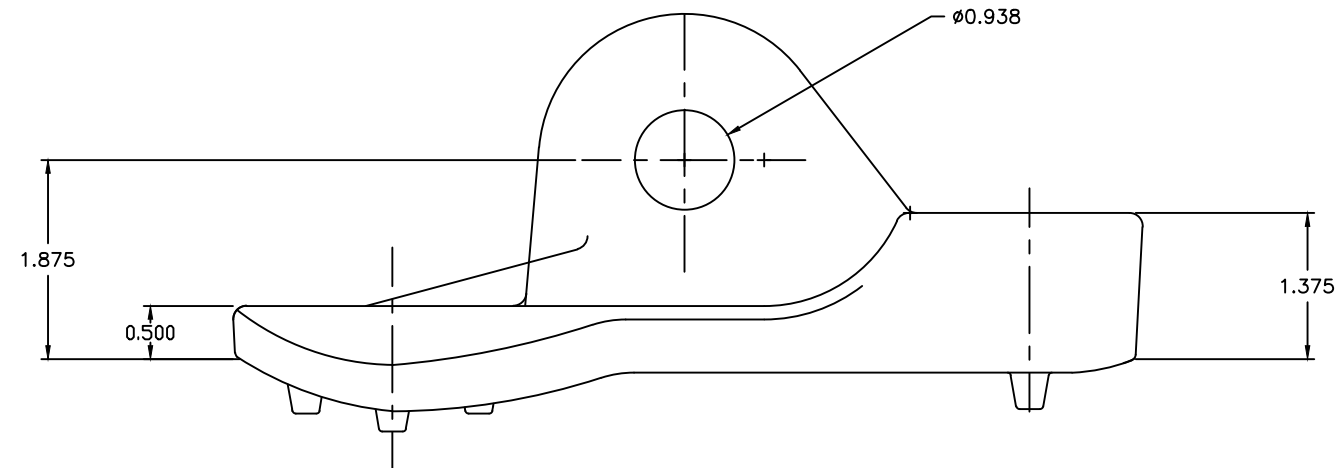
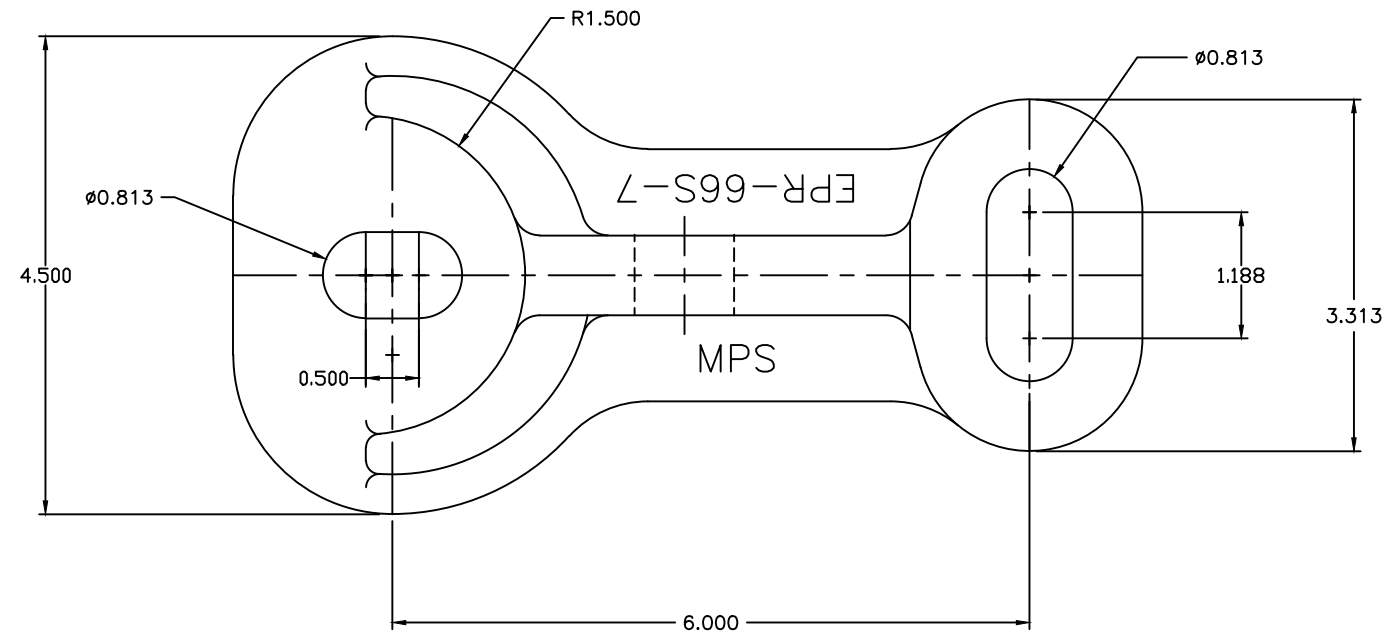
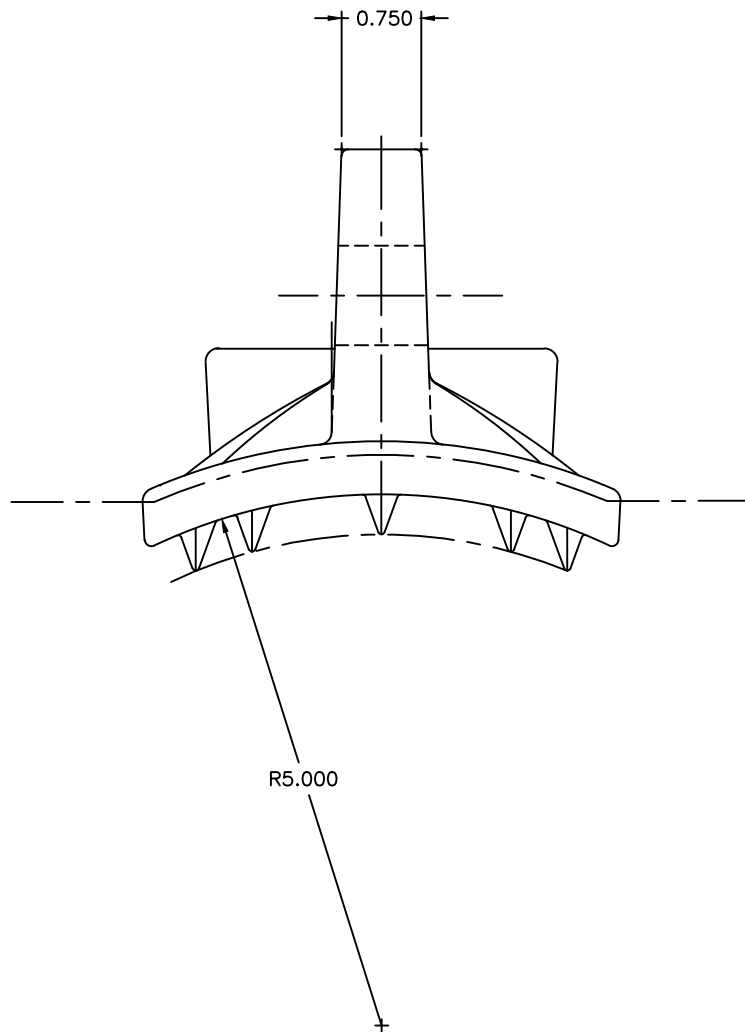
NO.	DATE	DESCRIPTION	BY	CKD
1	02-15-13	DWG. WAS BM-7976C, REV. 4	LMV	WCL
2	01-15-16	45° and 90° was rated wrong at 45 & 36 kips.	LMV	WCL

NOTES:

- 1.0 MATERIAL—DUCTILE IRON PER ASTM A-536, GRADE 654512 BHN 156-217. MATERIAL CERTIFICATION REQUIRED.
- 2.0 COATING—HOT DIP GALVANIZE PER ASTM A-153.
- 3.0 ISO 8062 CT TOLERANCES UNLESS NOTED
- 4.0 PART NO.—EPR-66S-7BC, (P64531C)
- 5.0 EST. WEIGHT - 5.65 LBS.
- 6.0 DIMENSION IN INCHES.


STRENGTH RATING:

- 45° - 36,000 LBS.
90° - 30,000 LBS



ENG. REF.

This information is confidential and is the property of Maclean Power Systems. It may not be made public or reproduced except that the Customer may make copies for use solely in installation, maintenance, and operation of products supplied by Maclean Power Systems.

 MacLean Power Systems BIRMINGHAM, ALABAMA		
DRAWN BY: LMV	APPROVED BY: CHECKED BY:	SCALE: NONE
POLE EYE PLATE EPR-66S-7		
DATE: 02-15-13	DRAWING NO: CEB-1366	R/2