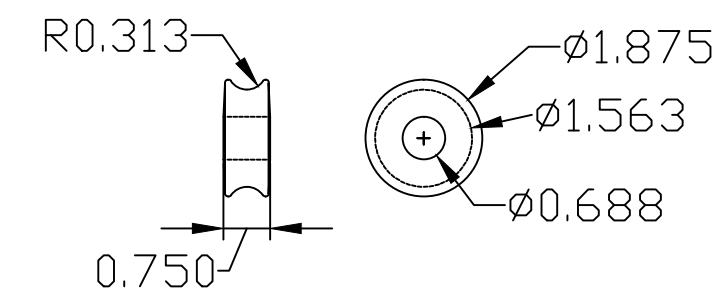
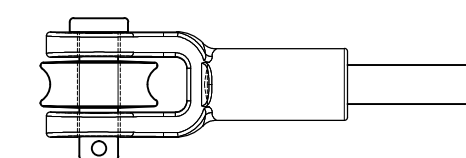


CLEVIS VIEW



ROLLER VIEW




CLEVIS WITH ROLLER

CATALOG NUMBER	LENGTHS (IN)		ULTIMATE STRENGTHS	ELECTRICAL WITHSTAND	
	L1	L2	TENSILE, LBS (F1)	DRY, kV	WET, kV
GCC21-12	12	20.000	21,000	90	45
GCC21-18	18	26.000	21,000	135	67.5
GCC21-24	24	32.000	21,000	180	90
GCC21-30	30	38.000	21,000	225	112.5
GCC21-36	36	44.000	21,000	270	135
GCC21-42	42	50.000	21,000	315	157.5
GCC21-48	48	56.000	21,000	336	180
GCC21-50	50	58.000	21,000	375	187.5
GCC21-54	54	62.000	21,000	405	202.5
GCC21-60	60	68.000	21,000	450	225
GCC21-78	78	86.000	21,000	585	292.5
GCC21-90	90	98.000	21,000	675	337.5
GCC21-96	96	104.000	21,000	720	360
GCC21-108	108	116.000	21,000	810	405
GCC21-120	120	128.000	21,000	900	450
GCC21-144	144	152.000	21,000	1080	540

NOTES:

- 1.0 MATERIAL
 - 1.1 END FITTING - DUCTILE IRON 654512
 - 1.2 ROD - FIBERGLASS
 - 1.3 CLEVIS PIN - STEEL (EQUIVALENT TO SAE GRADE 5)
 - 1.4 COTTER KEY - STAINLESS STEEL
- 2.0 FINISH
 - 2.1 END FITTING - HOT DIP GALVANIZED PER ASTM-A-153
 - 2.2 ROD - ULTRAVIOLET PROTECTIVE VEIL COATING, GRAY
- SILICONE COATED RUBBER FIBERGLASS ROD, GRAY
FOR "SC" OPTION
 - 2.3 CLEVIS PIN - HOT DIP GALVANIZED PER ASTM-A-153
 - 2.4 COTTER KEY - NONE
- 3.0 DIMENSIONS IN INCHES

NOTE: ADDED SUFFIX "R" FOR ONE ROLLER AND "R2" FOR TWO ROLLERS.
 EX. GCC21-24R FOR ONE OR GCC21-24R2 FOR TWO ROLLERS.
 ADDED SUFFIX "SC" INDICATES SILICONE COATED RUBBER FIBERGLASS ROD. EX. GCC21-24RSC
 ADDED SUFFIX "C10" INDICATES IT IS STACKED 100 PER PALLET.
 ADDED SUFFIX "USA" INDICATES 'MADE IN USA' STICKER IS REQUIRED.

NO.	DATE	DESCRIPTION	BY
REVISIONS			
 MacLean Power Systems BIRMINGHAM, ALABAMA			
DRAWN BY:	LMV	APPROVED BY:	WCL
		CHECKED BY:	WCL
		SCALE:	1:1
GCC21-"L1", R, R2 SERIES 21K GUY STRAIN INSULATOR CLEVIS - CLEVIS END FITTING			
DATE:	03/23/12	DRAWING NO:	CEB-3830
			R/0

This information is confidential and is the property of Maclean Power Systems. It may not be made public or reproduced except that the Customer may make copies for use solely in installation, maintenance, and operation of products supplied by Maclean Power Systems.