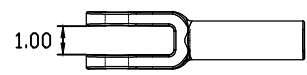
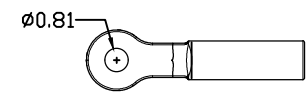
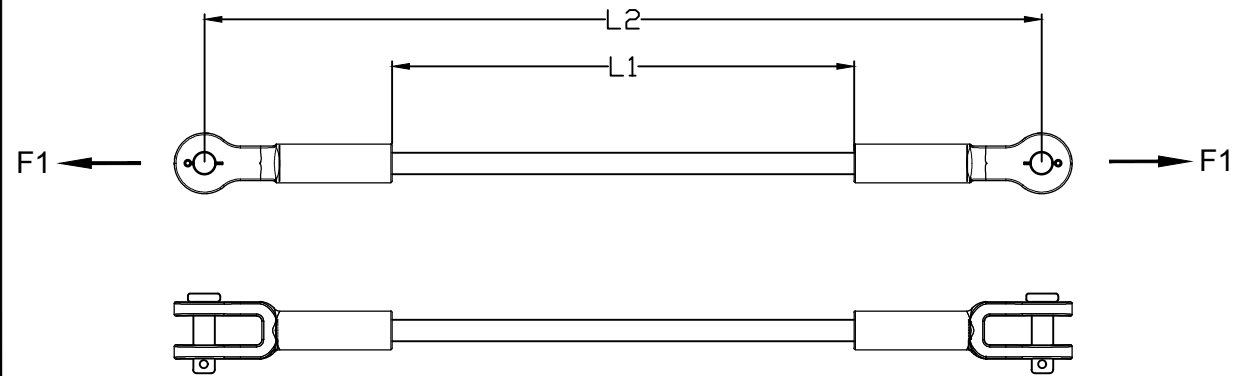
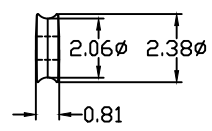
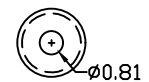


REVISIONS				
NO.	DATE	DESCRIPTION	BY	CHKD
1	05/24/17	ADDED GCC36-180	MBG	MBG
2	04/06/18	ADDED "SC" OPTION		

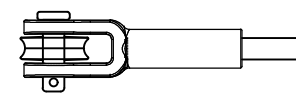


P70829 CLEVIS VIEW

CATALOG NUMBER	LENGTHS (IN)		ULTIMATE STRENGTHS		ELECTRICAL WITHSTAND	
	L1	L2	TENSILE, LBS (F1)	DRY, kV	WET, kV	
GCC36-12	12	25.00	36,000	90	45	
GCC36-18	18	31.00	36,000	135	67.5	
GCC36-24	24	37.00	36,000	180	90	
GCC36-30	30	43.00	36,000	225	112.5	
GCC36-36	36	49.00	36,000	270	135	
GCC36-42	42	55.00	36,000	315	157.5	
GCC36-54	54	67.00	36,000	405	202.5	
GCC36-60	60	73.00	36,000	450	225	
GCC36-78	78	91.00	36,000	585	292.5	
GCC36-90	90	103.00	36,000	675	337.5	
GCC36-96	96	109.00	36,000	720	360	
GCC36-108	108	121.00	36,000	810	405	
GCC36-120	120	133.00	36,000	900	450	
GCC36-144	144	157.00	36,000	1080	540	
GCC36-168	168	181.00	36,000	1260	630	
GCC36-180	180	193.00	36,000	1340	665	
GCC36-180.5	180.5	193.50	36,000	1350	675	
GCC36-240	240	253.00	36,000	1800	900	



ROLLER VIEW



CLEVIS WITH ROLLER

NOTES:

- 1.0 MATERIAL
 - 1.1 END FITTING - DUCTILE IRON 654512
 - 1.2 ROD - FIBERGLASS
 - 1.3 CLEVIS PIN - STEEL (CONFORMS TO SAE GRADE 5)
 - 1.4 COTTER KEY - STAINLESS STEEL
- 2.0 FINISH
 - 2.1 END FITTING - HOT DIP GALVANIZED PER ASTM-A-153
 - 2.2 ROD - ULTRAVIOLET PROTECTIVE VEIL COATING, GRAY
 - 2.3 CLEVIS PIN - HOT DIP GALVANIZED PER ASTM-A-153
 - 2.4 COTTER KEY - NONE
- 3.0 DIMENSIONS IN INCHES

NOTE: ADDED SUFFIX "R" FOR ONE ROLLER AND "R2" FOR TWO ROLLERS.
 EX. GCC36-54R FOR ONE OR GCC36-54R2 FOR TWO ROLLERS.
 © ADDED SUFFIX "-SC" FOR SILICONE COATING. EX: GCC36-108R2-SC.
 ADDED SUFFIX "-APC", "-BPA" HAS CUSTOMER SPECIFIC MODIFICATIONS.

MACLEAN POWER SYSTEMS
 A Maclean-togg Company

GCC36-"L1", R, R2 SERIES
 36K GUY STRAIN INSULATOR

CLEVIS END FITTING, CLEVIS END FITTING

This information is confidential and is the property of Maclean Power Systems. It may not be made public or reproduced except that the Customer may make copies for use solely in installation, maintenance, and operation of products supplied by Maclean Power Systems.

DATE: 12/15/11	SCALE: NA	NO.:	CEB-3842	R / 2	SH. /
DRAWN: CR	CHKD: /	APP.:		DF. /	

ENG. REF.