

NOTES:

1.0 MATERIAL: MATERIAL: BODY AND KEEPER – HOT DIPPED GALVA-  
 NIZED DUCTILE IRON  
 HARDWARE – STEEL, HOT DIP GALVANIZED PER ASTM A-153  
 COMPRESSION SPRING – STAINLESS STEEL  
 COTTER PIN – STAINLESS STEEL

2.0 DIMENSIONS IN INCHES

RECOMMENDED TORQUE:  
 25 FT. LBS. – 3/8" BOLTS  
 40 FT. LBS. – 1/2" BOLTS

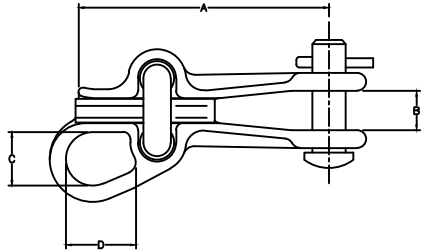


FIGURE 1

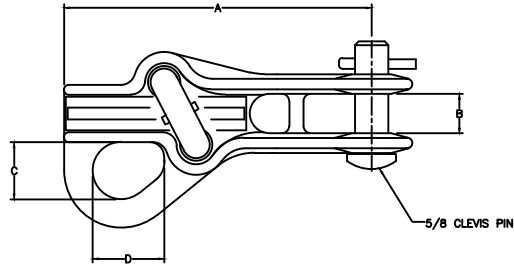


FIGURE 2

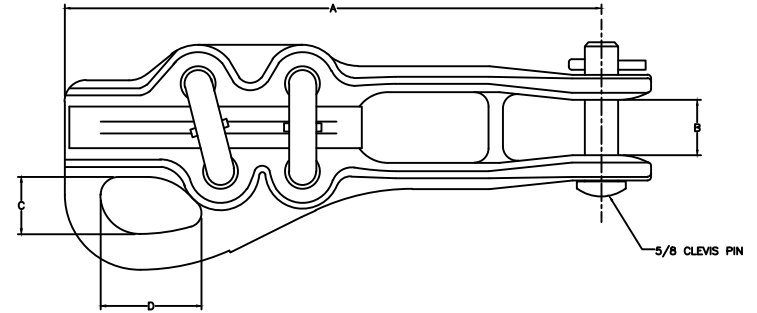


FIGURE 3

CATALOG NUMBER	CONDUCTOR RANGE INCHES	FIG. NO.	DIMENSIONS IN INCHES			U-BOLTS		CLAMP ULTIMATE STRENGTH LBS.	SAG EYE ULTIMATE STRENGTH LBS.
			A	B	C X D	NO.	SIZE		
SDE-37F	.15-.37	1	4-3/8	11/16	15/16 X 1-3/16	1	1/2	4,000	4,000
SDE-46F	.16-.46	3	6-1/4	11/16	1-1/16 X 1-3/8	2	3/8	8,000	5,000
SDE-52F	.14-.53	2	5-3/8	11/16	1 X 1-1/4	1	1/2	6,000	5,000
SDE-73F	.25-.73	3	8-1/4	13/16	1-1/16 X 1-3/8	2	1/2	12,000	6,000
SDE-93F	.36-.93	3	9-3/8	15/16	1-1/8 X 1-5/8	2	1/2	15,000	12,000

This information is confidential and is the property of Maclean Power Systems. It may not be made public or reproduced except that the Customer may make copies for use solely in installation, maintenance, and operation of products supplied by Maclean Power Systems.

**Maclean Power Systems**  
 BIRMINGHAM, ALABAMA

DRAWN BY: JWF      APPROVED BY:      SCALE: NONE  
 CHECKED BY:      NONE

STRAIGHT DEADEND SERIES

DATE: 3/20/08      DRAWING NO. CEC-3683      SH: 1 of 1      R/0