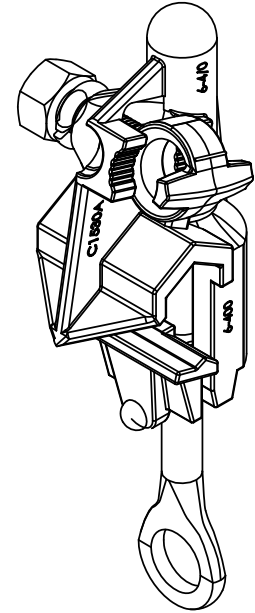
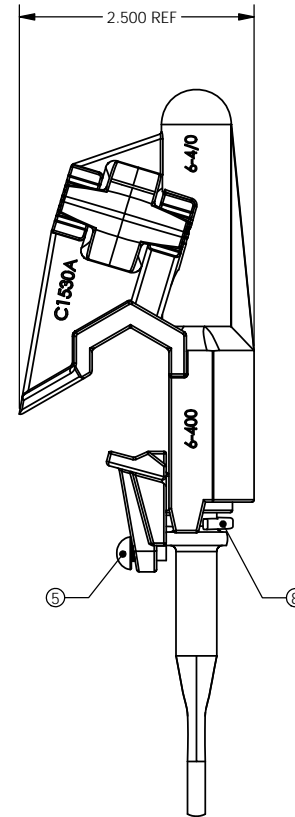
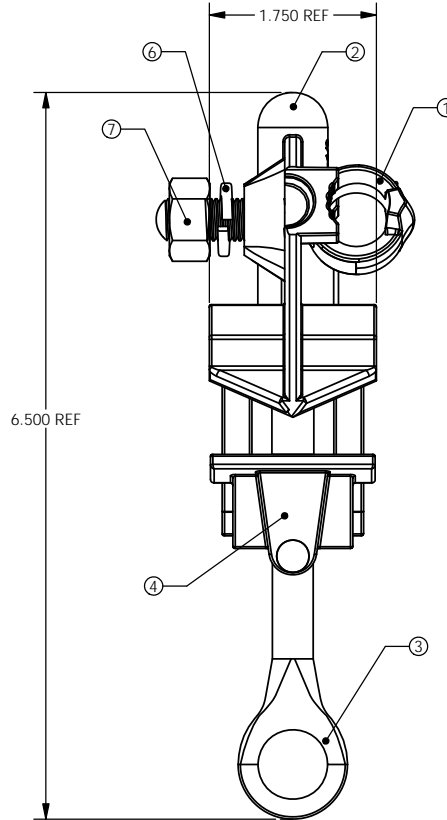


CATALOG NUMBER	CONNECTION TYPE		RUN			TAP			TAP NUT
	RUN	TAP	DIAMETER	MAX	MIN	DIAMETER	MAX	MIN	
C 1530AP	AL/CU	AL/CU	.162"-.745"	400 MCM	#6 SOL	.152"-.682"	4/0 STR	#6 SOL	3/4"

PAPER SIZE		DRAWING NUMBER		
C		GD-C1530AP		
REV	REVISED BY:	REVISION DATE	ECO #	
A	BTS	11-11-2014	11580	
B	ACJ	06-12-2015	11840	
C	JAA	09-21-2015	12004	

ITEM NUMBER	1	2	3	4	5	6	7	8
PART DESCRIPTION	TAP BOLT	BODY	EYESCREW	JAW	RIVET	TAP LOCKWASHER	NUT	RUN LOCKWASHER
MATERIAL	BRONZE ALLOY TIN PLATED	ALUMINUM ALLOY TIN PLATED	STAINLESS STEEL	ALUMINUM ALLOY TIN PLATED	STAINLESS STEEL	STAINLESS STEEL	STAINLESS STEEL	STAINLESS STEEL

- NOTES:  
 1) RECOMMENDED TORQUE LEVELS  
 RUN: 240 IN-LBS.  
 TAP: 240 IN-LBS.  
 2) STANDARD PACK: 25 PCS  
 3) ADD SUFFIX "-9" FOR PACKAGING WITH INHIBITOR.



USE OR REPRODUCTION OF THIS DRAWING FOR THE PURPOSE OF MANUFACTURING THIS ARTICLE OR ARTICLES SHOWN OR ANY OTHER PURPOSE IS STRICTLY PROHIBITED EXCEPT ON WRITTEN PERMISSION \*\*MACLEAN POWER SYSTEMS\*\*

UNLESS OTHERWISE SPECIFIED DIMENSIONS ARE IN:	
INCHES	
TOLERANCES ARE:	
.XX	±
.XXX	±
X/XX	±
ANGLES	± °

**MACLEAN POWER SYSTEMS**  
 11411 ADDISON STREET  
 FRANKLIN PARK, IL 60131  
 TEL: (847) 455-0014 FAX: (847) 455-0029

DRAWING NUMBER:		DO NOT SCALE DRAWING	
GD-C1530AP		CAD GENERATED DRAWING DO NOT MANUALLY UPDATE	
SHEET NAME:	F-041700	1 OF 1	DESIGN DATE:
DRAWING DESCRIPTION:		11-11-2014	
GENERAL DIMENSION DRAWING C1530AP HOT LINE CLAMP ASSEMBLY		DRAWN BY:	BTS
		ENGINEER:	MG
		APPROVED:	SRA
DRAWING SCALE: NTS			