

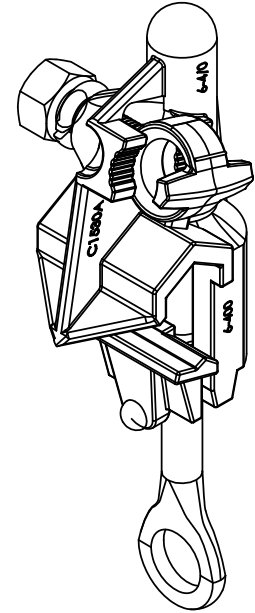
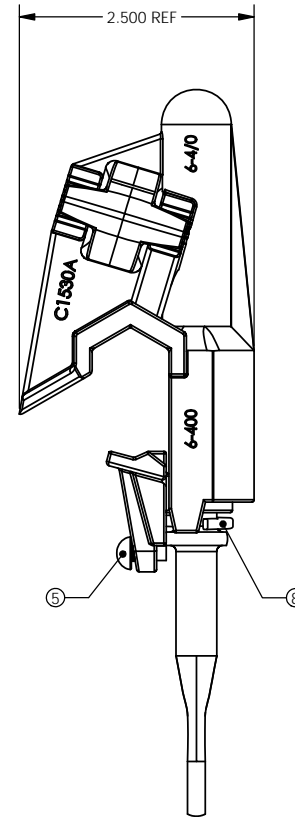
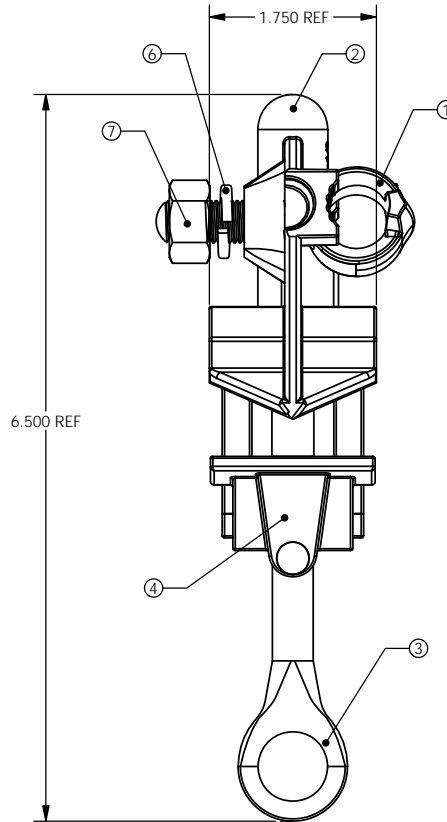
CATALOG NUMBER	CONNECTION TYPE		RUN			TAP			TAP NUT
	RUN	TAP	DIAMETER	MAX	MIN	DIAMETER	MAX	MIN	
C 1530A	AL	AL/CU	.162-.1745"	400 MCM	#6 SOL	.152-.1682"	4/0 STR	#6 SOL	3/4"

PAPER SIZE		DRAWING NUMBER		
C		GD-C1530A		
REV	REVISED BY:	REVISION DATE	ECO #	
A	RRL	09-26-2012	10716	
B	BTS	11-11-2014	11580	
C	JAA	09-21-2015	12004	

ITEM NUMBER	1	2	3	4	5	6	7	8
PART DESCRIPTION	TAP BOLT	BODY	EYESCREW	JAW	RIVET	TAP LOCKWASHER	NUT	RUN LOCKWASHER
MATERIAL	BRONZE ALLOY TIN PLATED	ALUMINUM ALLOY	STAINLESS STEEL	ALUMINUM ALLOY	STAINLESS STEEL	STAINLESS STEEL	STAINLESS STEEL	STAINLESS STEEL

NOTES:
 1) RECOMMENDED TORQUE LEVELS
 RUN: 240 IN-LBS.
 TAP: 240 IN-LBS.

2) STANDARD PACK: 25 PCS



USE OR REPRODUCTION OF THIS DRAWING FOR THE PURPOSE OF MANUFACTURING THIS ARTICLE OR ARTICLES SHOWN OR ANY OTHER PURPOSE IS STRICTLY PROHIBITED EXCEPT ON WRITTEN PERMISSION **MACLEAN POWER SYSTEMS**

UNLESS OTHERWISE SPECIFIED DIMENSIONS ARE IN:	
INCHES	
TOLERANCES ARE:	
.XX	±
.XXX	±
X/XX	±
ANGLES	± °

MACLEAN POWER SYSTEMS
 11411 ADDISON STREET
 FRANKLIN PARK, IL 60131
 TEL: (847) 455-0014 FAX: (847) 455-0029

DRAWING NUMBER: GD-C1530A		DO NOT SCALE DRAWING
SHEET NAME: F-041700	1 OF 1	CAD GENERATED DRAWING DO NOT MANUALLY UPDATE
DRAWING DESCRIPTION: GENERAL DIMENSION DRAWING C1530A HOT LINE CLAMP ASSEMBLY		DESIGN DATE: 09-26-12
DRAWN BY: RRL		ENGINEER: RRL
APPROVED: KJS		
DRAWING SCALE: 1:2		