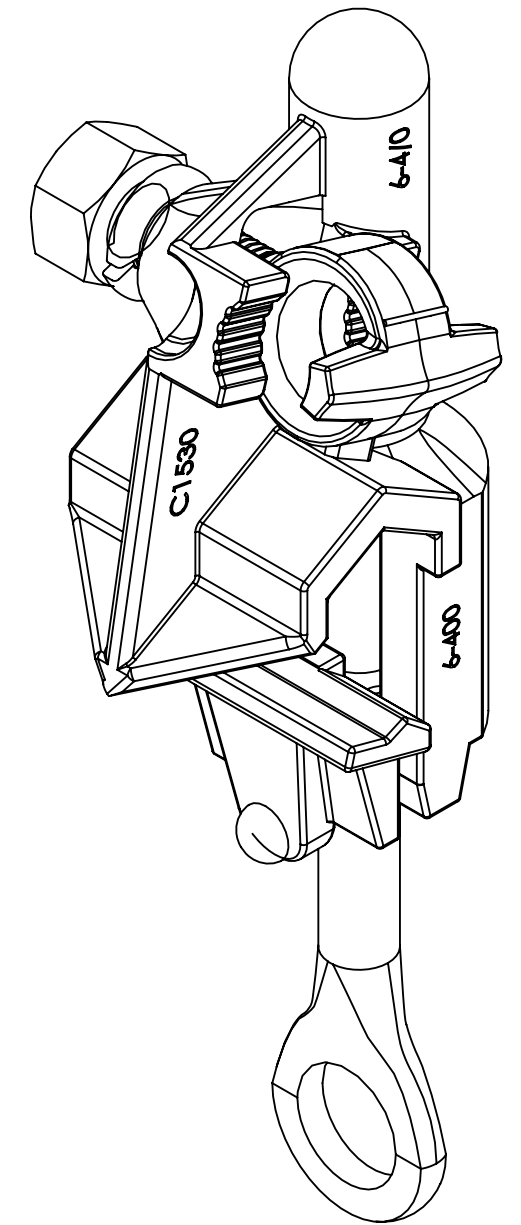
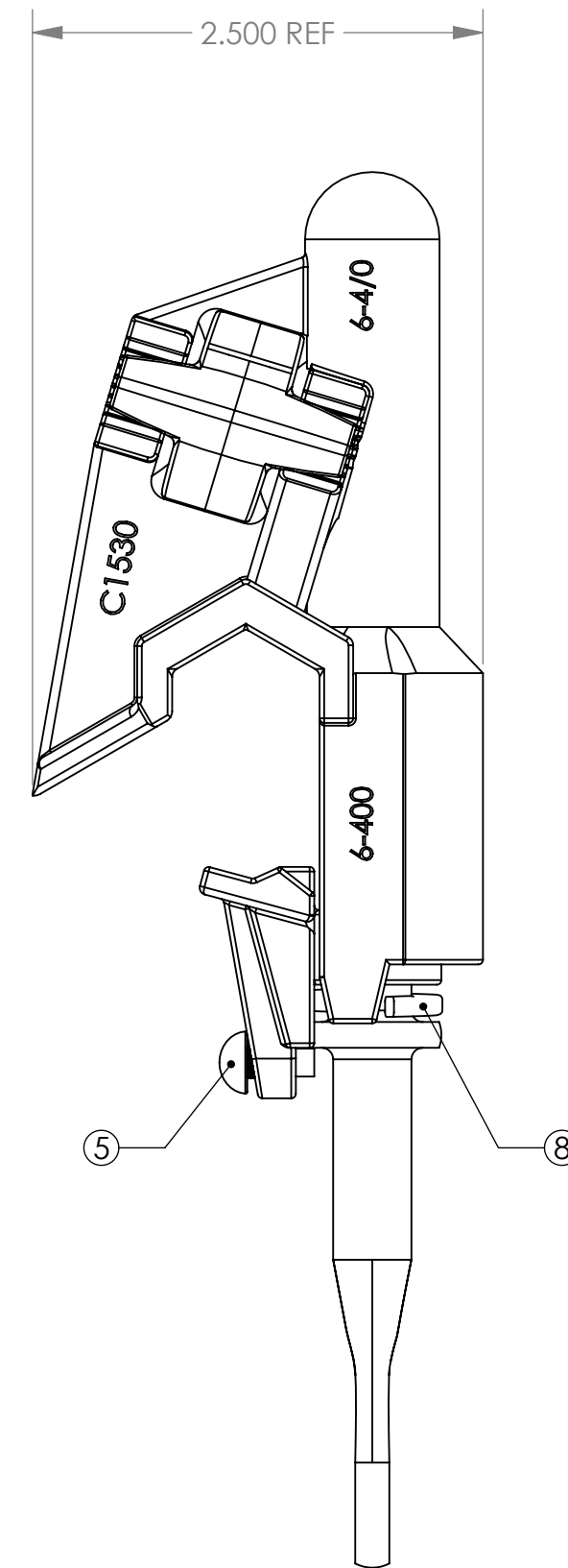
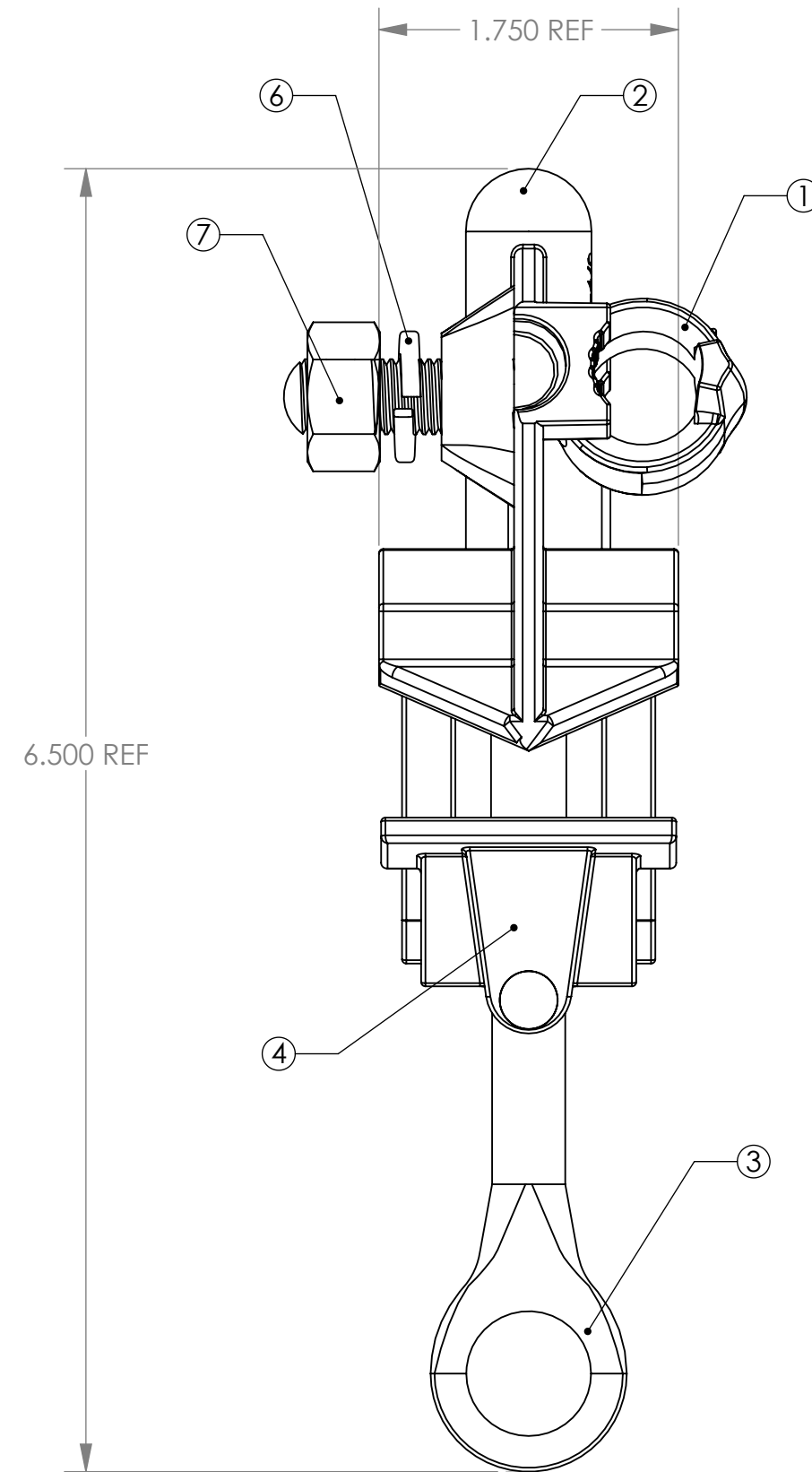


CATALOG NUMBER	CONNECTION TYPE		RUN			TAP			TAP NUT
	RUN	TAP	DIAMETER	MAX	MIN	DIAMETER	MAX	MIN	
C 1530P	CU	CU	.162"-.745"	400 MCM	#6 SOL	.152"-.682"	4/0 STR	#6 SOL	3/4"

ITEM NUMBER	1	2	3	4	5	6	7	8
PART DESCRIPTION	TAP BOLT	BODY	EYESCREW	JAW	RIVET	TAP LOCKWASHER	NUT	RUN LOCKWASHER
MATERIAL	BRONZE ALLOY (TIN PLATED)	BRONZE ALLOY (TIN PLATED)	STAINLESS STEEL	BRONZE ALLOY (TIN PLATED)	STAINLESS STEEL	STAINLESS STEEL	STAINLESS STEEL	STAINLESS STEEL

- NOTES:**
- ALL DIMENSIONS ARE IN INCHES.
 - ALL DIMENSIONS ARE REFERENCE.
 - STANDARD PACK IS 25.
 - RECOMMENDED INSTALL TORQUE:
RUN - 240 IN-LBS
TAP - 240 IN-LBS
 - TAP NUT IS COMPATIBLE WITH 3/4" SOCKET.

INSTALLATION:
WIRE BRUSH THE CONDUCTOR PRIOR TO INSERTION. THE CONDUCTOR SIZE MUST WITHIN THE SPECIFIED RANGES NOTED ABOVE. ONCE INSERTED, TIGHTEN TO THE SPECIFIED TORQUE RATING.



PAPER SIZE		DRAWING NUMBER	
C		GD-C1530P	
REV	REVISED BY:	REVISION DATE	ECO #
A	MRM	05-15-12	10617
B	JAA	09-21-15	12004
C	CAN	09-25-20	D9044

USE OR REPRODUCTION OF THIS DRAWING FOR THE PURPOSE OF MANUFACTURING THIS ARTICLE OR ARTICLES SHOWN OR ANY OTHER PURPOSE IS STRICTLY PROHIBITED EXCEPT ON WRITTEN PERMISSION **MACLEAN POWER SYSTEMS**

UNLESS OTHERWISE SPECIFIED DIMENSIONS ARE IN:	
INCHES	
TOLERANCES ARE:	
.XX	±
.XXX	±
X/XX	±
ANGLES	± °

MacLean
POWER SYSTEMS
MACLEAN POWER SYSTEMS
1465 INDUSTRIAL PART DRIVE
TRENTON, TN 38382
TEL. (855) 677-7447

DRAWING NUMBER:	GD-C1530P	DO NOT SCALE DRAWING
SHEET NAME:	F-041701 1 of 1	CAD GENERATED DRAWING DO NOT MANUALLY UPDATE
DRAWING DESCRIPTION:	GENERAL DIMENSION DRAWING C1530P HOT LINE CLAMP ASSEMBLY	DESIGN DATE: 05-15-12
DRAWING SCALE:	1:2	DRAWN BY: MRM
		ENGINEER: MRM
		APPROVED: JBB