

CATALOG NUMBER	CONNECTION TYPE		RUN			TAP			TAP NUT
	RUN	TAP	DIAMETER	MAX	MIN	DIAMETER	MAX	MIN	WIDTH
C 1535AP	AL	AL/CU	.250".860"	477 MCM	#4 ACSR	.250".860"	477 MCM	#4 ACSR	3/4"

PAPER SIZE	DRAWING NUMBER		
C	GD-C1535AP		
REV	REVISED BY:	REVISION DATE	ECO #
A	ACJ	02-03-15	11679
B	ACJ	05-22-15	11812
C	JAA	09-21-15	12004

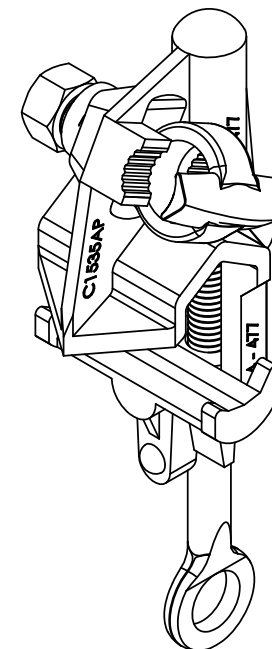
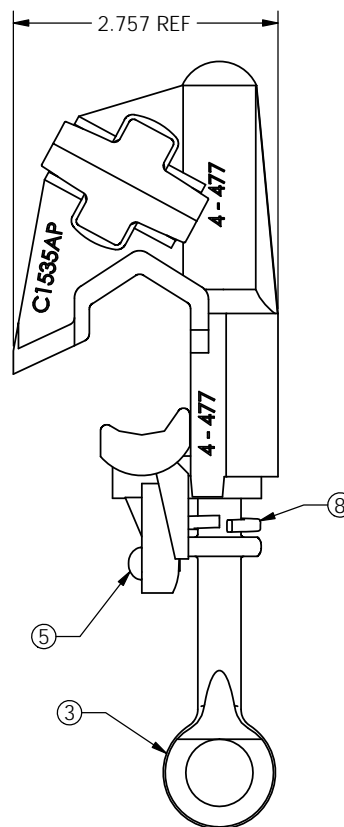
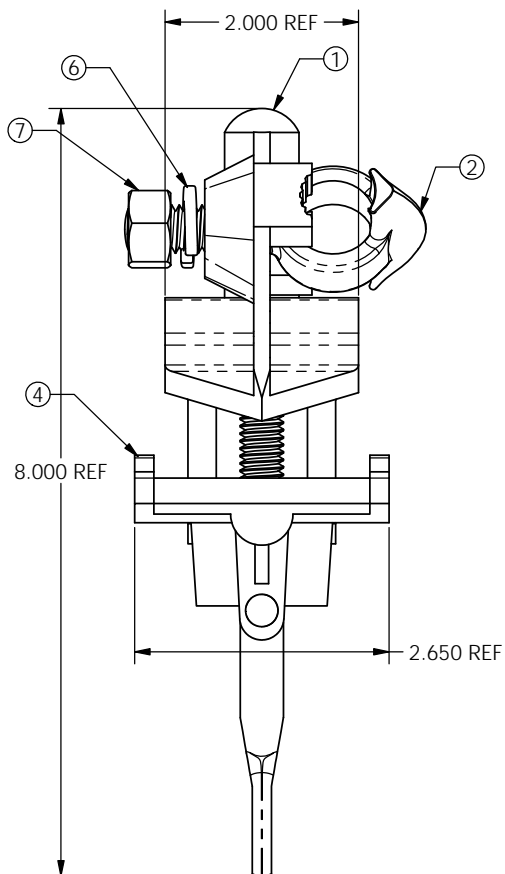
ITEM NUMBER	1	2	3	4	5	6	7	8
PART DESCRIPTION	BODY	TAP BOLT	EYESCREW	JAW	RIVET	TAPLOCK WASHER	NUT	RUNLOCK WASHER
MATERIAL	ALUMINUM ALLOY TIN PLATED	BRONZE ALLOY TIN PLATED	STAINLESS STEEL	ALUMINUM ALLOY TIN PLATED	STAINLESS STEEL	STAINLESS STEEL	STAINLESS STEEL	STAINLESS STEEL

NOTES:

1. RECOMMENDED TORQUE LEVELS

RUN: 360 IN-LBS.
TAP: 360 IN-LBS.

2. STANDARD PACK: 25 PCS



This drawing contains confidential information that is the property of MacLean Power, L.L.C. ("MacLean"). Use of MacLean's confidential information without MacLean's express written consent is strictly prohibited and may expose you to legal liability. If you believe that you received this material in error, please destroy it or return it to "MacLean Power, L.L.C., 11411 Addison Street, Franklin Park, Illinois 60131, USA."

UNLESS OTHERWISE SPECIFIED DIMENSIONS ARE IN:	
INCHES	
TOLERANCES ARE:	
.XX	+/- .XX
XXX	+/- .XXX
X/XX	+/- X/XX
ANGLES	+/- X



11411 ADDISON STREET FRANKLIN PARK, IL. 60131
TEL: (847) 455-0014 FAX: (847) 455-0029

DRAWING NUMBER:	GD-C1535AP	DO NOT SCALE DRAWING
SHEET NAME:	C-1535	CAD GENERATED DRAWING DO NOT MANUALLY UPDATE
DRAWING DESCRIPTION:	GENERAL DIMENSION DRAWING C-1535 HOT LINE CLAMP ASSEMBLY	DESIGN DATE: 02-03-15
DRAWN BY:	ACJ	ENGINEER: MG
APPROVED:	MG	
DRAWING SCALE:	1:1	