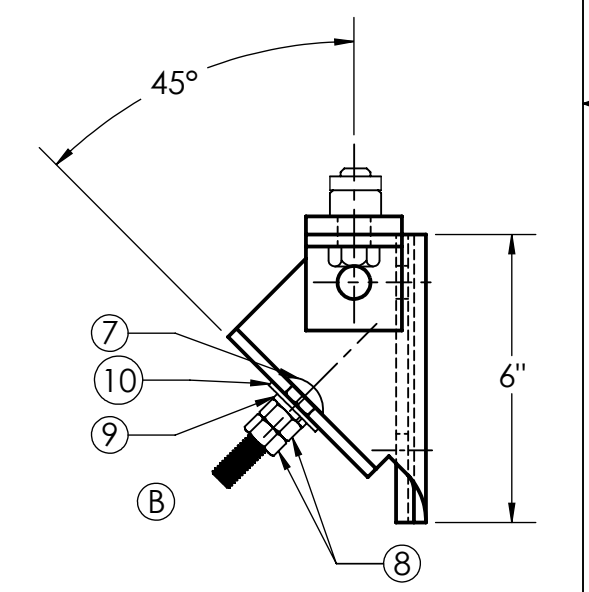
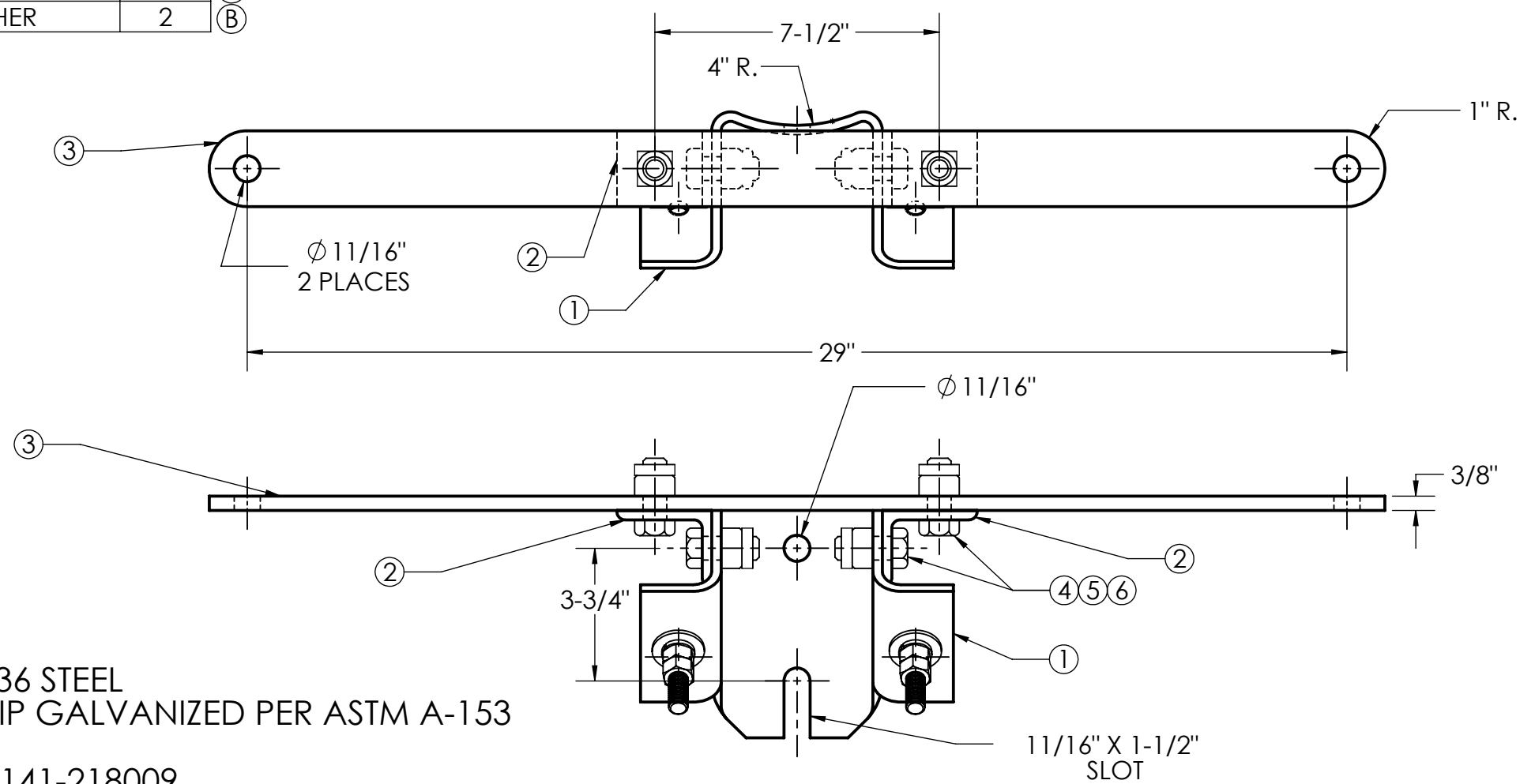


BILL OF MATERIALS		
ITEM NO.	DESCRIPTION	QTY
1	MOUNTING PLATE, SQ. HOLES	1
2	MOUNTING CLIP	2
3	MOUNTING STRAP	1
4	5/8" SQUARE NUT	4
5	5/8" X 1 1/2" HEX BOLT	4
6	5/8" SQUARE LOCK NUT	4
7	1/2" X 2.5" CARRIAGE BOLT	2
8	1/2" HEX NUT	4
9	1/2" SPLIT LOCK WASHER	2
10	1/2" FLAT WASHER	2

PAPER SIZE	DRAWING NUMBER		
B	GD-SF-SBA-5-45-SB		
REV	REVISED BY	REVISION DATE	ECO #
A	JAM	06-25-2015	11847
B	JAM	07-12-2016	12229



- NOTES:
1. MATERIAL: A-36 STEEL
 2. FINISH: HOT DIP GALVANIZED PER ASTM A-153 SPECS.
 3. REF: FPL M&S 141-218009
 4. 1/2" HARDWARE: 18-8 STAINLESS STEEL, CLASS 2A THREAD
 5. PACK 30 PCS PER PALLET

This drawing contains confidential information that is the property of MacLean Power, L.L.C. ("MacLean"). Use of MacLean's confidential information without MacLean's express written consent is strictly prohibited and may expose you to legal liability. If you believe that you received this material in error, please destroy it or return it to "MacLean Power, L.L.C., 481 Munn Rd, Suite 300, Fort Mill, SC 29715 USA."



**MACLEAN
POWER
SYSTEMS**

WWW.MACLEANPOWER.COM

DRAWING NUMBER: GD-SF-SBA-5-45-SB	
SHEET NAME: Sheet1	1 OF 1
DRAWING DESCRIPTION: SWITCH BRACKET ADAPTOR ASM WITH 1/2" STAINLESS STEEL HARDWARE	
DRAWN BY: JAM	DESIGN DATE: