



MacLean Power Systems  
 7801 Park Place Rd., York, SC 29745  
 USA (803) 628-2100

MPS Catalog Number

**H0 40 60 004 MX SS 002**

Revision: B

Date 3/3/2021

**End Fittings**

Tower End Fitting: 3/4"-10 Round Base (Galv. Duct. Iron)

Line End Fitting: Vertical Trunnion (Aluminum)

**Material**

Number of Sheds: 2  
 Rod Diameter: 1-1/2"  
 Weight Estimate: 6.4 lbs 2.9 kg

**Dimensional Values**

Section Length (L): 12.7 in 323 mm  
 Rubber Length (X): 4.0 in 101 mm  
 Shed Height (P): 2.3 in 58 mm  
 Shed Diameter (B): 6.5 in 165 mm  
 Shed Spacing (S): 2.0 in 51 mm  
 Dry Arc Distance: 6.2 in 157 mm  
 Leakage Distance: 12.2 in 310 mm

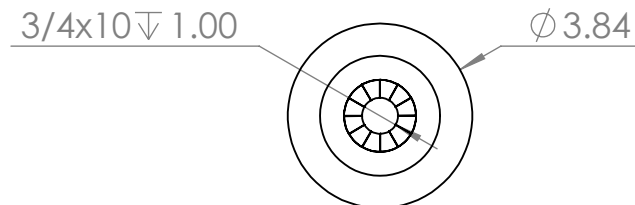
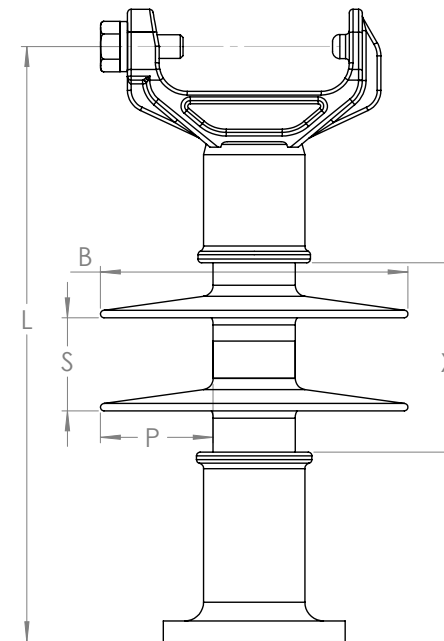
**Electricals Values**

60 Hz dry Flashover:	88 kV	Min. Withstand	73 kV
60 Hz Wet Flashover:	59 kV	Min. Withstand	41 kV
Positive CIFO:	136 kV	Min. Withstand	108 kV
Negative CIFO:	163 kV	Min. Withstand	139 kV

**Mechanical Values**

Max. Design Cant. Load (MDCL):	1,350 lbs	6.0 kN
Specified Cant. Load (SCL):	2,800 lbs	12.5 kN
Specified Tensile Load (STL):	5,000 lbs	22.2 kN

This drawing contains confidential information that is the property of MacLean Power, L.L.C. ("MacLean"). Use of MacLean's confidential information without MacLean's express written consent is strictly prohibited and may expose you to legal liability. If you believe that you received this material in error, please destroy it or return it to "MacLean Power, L.L.C., 7801 Park Place Rd., York, South Carolina 29745, USA."



Dimension: inches [millimeters]

Insulator assembly complies with ANSI C.29.18 and CSA C411.6 Standards

NOTE: Drawing not actual depiction of insulator appearance