



MacLean Power
Systems
7801 Park Place Rd., York, SC 29745
USA (803) 628-2100

MPS Catalog Number

HO 40 70 010 MX SS 005

Revision: A

Date 11/4/2020

End Fittings

Tower End Fitting:

3/4"-10 Round Base (Galv. Duct. Iron)

Line End Fitting:

F-Neck (Aluminum)

Material

Number of Sheds:

5

Rod Diameter:

1-1/2"

Weight Estimate:

8.9 lbs

4.0 kg

Dimensional Values

Section Length (L):

17.6 in 447 mm

Rubber Length (X):

9.9 in 252 mm

Shed Height (P):

2.3 in 58 mm

Shed Diameter (B):

6.5 in 165 mm

Shed Spacing (S):

2.0 in 50 mm

Dry Arc Distance:

12.7 in 322 mm

Leakage Distance:

31.4 in 798 mm

Electricals Values

60 Hz dry Flashover:

159 kV

Min. Withstand

125 kV

60 Hz Wet Flashover:

117 kV

Min. Withstand

102 kV

Positive CIFO:

244 kV

Min. Withstand

205 kV

Negative CIFO:

277 kV

Min. Withstand

242 kV

Mechanical Values

Max. Design Cant. Load (MDCL):

1,350 lbs

6.01 kN

Specified Cant. Load (SCL):

2,800 lbs

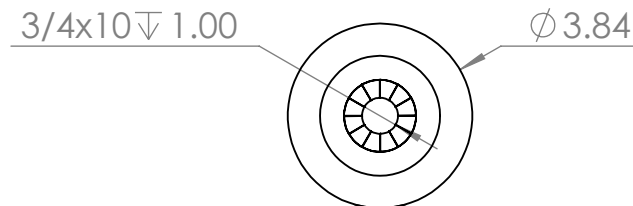
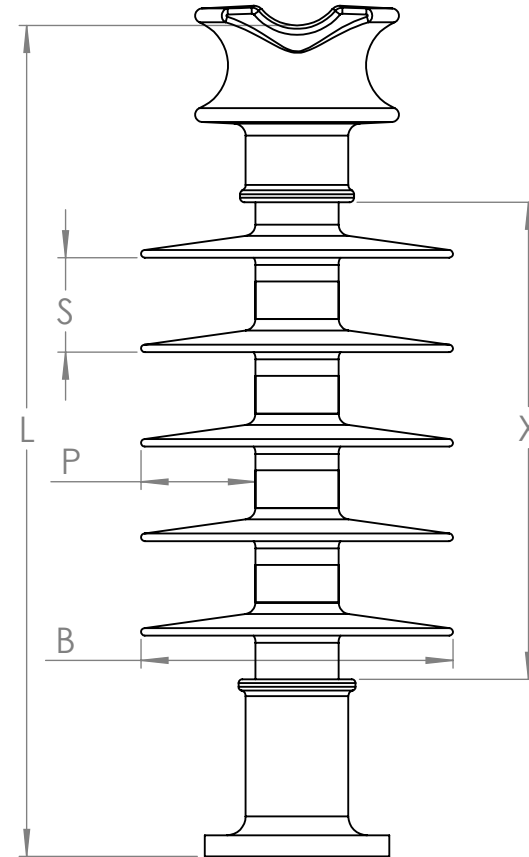
12.5 kN

Specified Tensile Load (STL):

5,000 lbs

22.2 kN

This drawing contains confidential information that is the property of MacLean Power, L.L.C. ("MacLean"). Use of MacLean's confidential information without MacLean's express written consent is strictly prohibited and may expose you to legal liability. If you believe that you received this material in error, please destroy it or return it to "MacLean Power, L.L.C., 7801 Park Place Rd., York, South Carolina 29745, USA."



Dimension: inches [millimeters]

NOTE: Drawing not actual depiction of insulator appearance

Insulator assembly complies with ANSI C.29.18 and CSA C411.6 Standards