

MPS Catalog Number

H2 90 10 015 MX SS 008

Date: 02/24/2022

End Fittings

Tower End Fitting:

Gain / 12 deg / Steel

Line End Fitting:

2 HL Drop Tongue / Galv. Ductile Iron

Material

Corona Ring (Line):

None

Corona Rings are recommended for applications of 230 kV and above

Mounting Angle:

12 deg

Number of Sheds:

8

Rod Diameter:

2.5 in

Weight Estimate:

42.1 lbs

19 kg

Dimensional Values

Section Length (L):

25.9 in 658 mm

Rubber Length (X):

15 in 381 mm

Shed spacing (S):

1.95 in 50 mm

Shed Projection (P):

1.86 in 47 mm

Dry Arc Distance:

17.7 in 450 mm

Leakage Distance:

42.6 in 1,082 mm

Electricals Values

60 Hz dry Flashover (Min. Withstand):

183 kV 172 kV

60 Hz Wet Flashover (Min. Withstand):

163 kV 123 kV

CIFO Positive (Min. Withstand):

309 kV 274 kV

CIFO Negative (Min. Withstand):

392 kV 307 kV

Mechanical Values

Max. Design Cant. Load (MDCL):

4,187 lbs 18.6 kN

Specified Cant. Load (SCL):

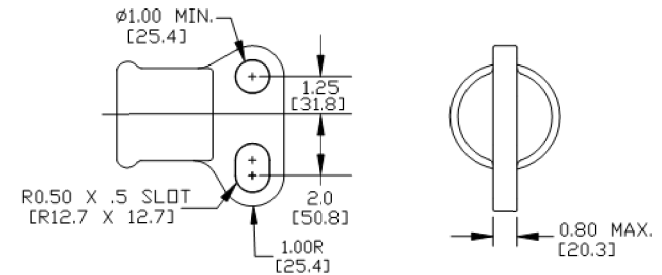
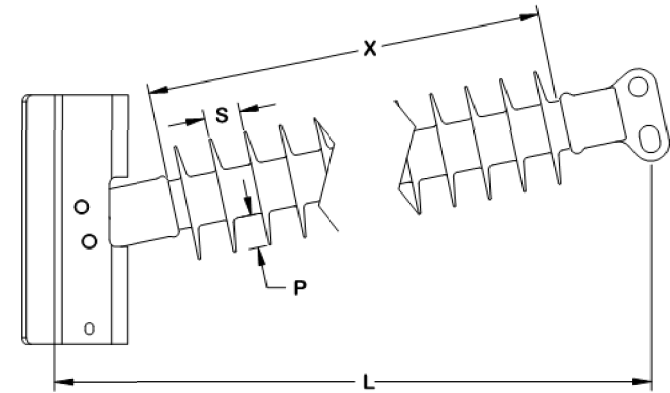
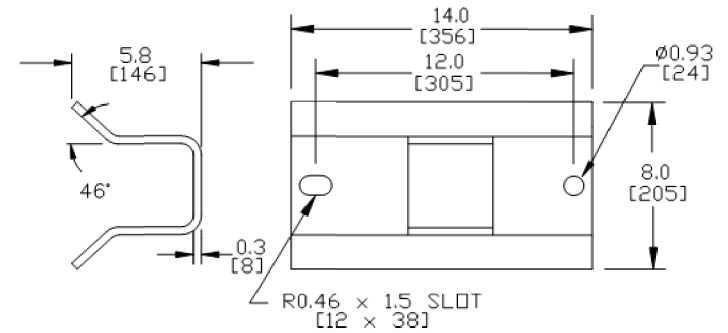
8,374 lbs 37.2 kN

Specified Tensile Load (STL):

15,000 lbs 66.7 kN

This drawing contains confidential information that is the property of MacLean Power, L.L.C. ("MacLean"). Use of MacLean's confidential information without MacLean's express written consent is strictly prohibited and may expose you to legal liability. If you believe that you received this material in error, please destroy it or return it to "MacLean Power, L.L.C., 7801 Park Place Rd., York, South Carolina 29745, USA."

Notes:



Dimension: inches [millimeters]

NOTE: Drawing not actual depiction of insulator appearance.

Silicone rubber sheath and sheds complies with applicable ANSI and IEC standards.

Prepared By: Laurel Wallace