

MPS Catalog Number **H2 90 10 023 MX SS 012**

Date 7/14/2014

End Fittings \_\_\_\_\_

Tower End Fitting: \_\_\_\_\_ Gain / 12 deg / Steel

Line End Fitting \_\_\_\_\_ 2 HL Drop Tongue / Galv. Ductile Iron

Material \_\_\_\_\_

Corona Ring (Line) \_\_\_\_\_ None

Corona Rings are recommended for applications of 230 kV and above

Mounting Angle \_\_\_\_\_ 12

Number of Sheds \_\_\_\_\_ 12

Rod Diameter \_\_\_\_\_ 2.5 in

Weight Estimate \_\_\_\_\_ 51.6 lbs 23 kg

Dimensional Values \_\_\_\_\_

Section Length (L): \_\_\_\_\_ 33.7 in 856 mm

Rubber Length (X): \_\_\_\_\_ 23 in

Shed spacing (S): \_\_\_\_\_ 2.0 in 50 mm

Shed Projection (P): \_\_\_\_\_ 1.6 in 41 mm

Dry Arc Distance \_\_\_\_\_ 25.6 in 649 mm

Leakage Distance \_\_\_\_\_ 63.8 in 1620 mm

Electricals Values \_\_\_\_\_

60 Hz dry Flashover \_\_\_\_\_ 254 kV Min. Withstand 239 kV

60 Hz Wet Flashover \_\_\_\_\_ 232 kV Min. Withstand 179 kV

Pos. Critical Impulse Flashover \_\_\_\_\_ 432 kV Min. Withstand 387 kV

Neg. Critical Impulse Flashover \_\_\_\_\_ 527 kV Min. Withstand 421 kV

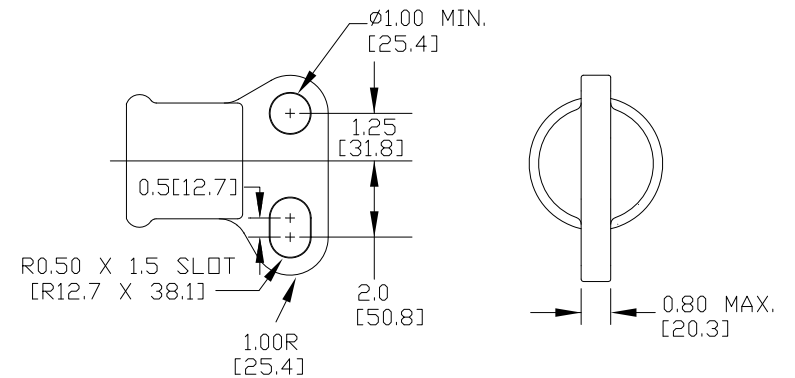
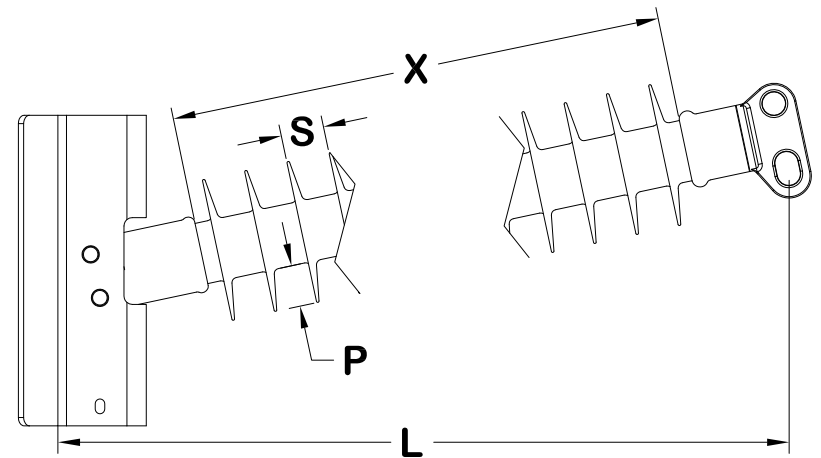
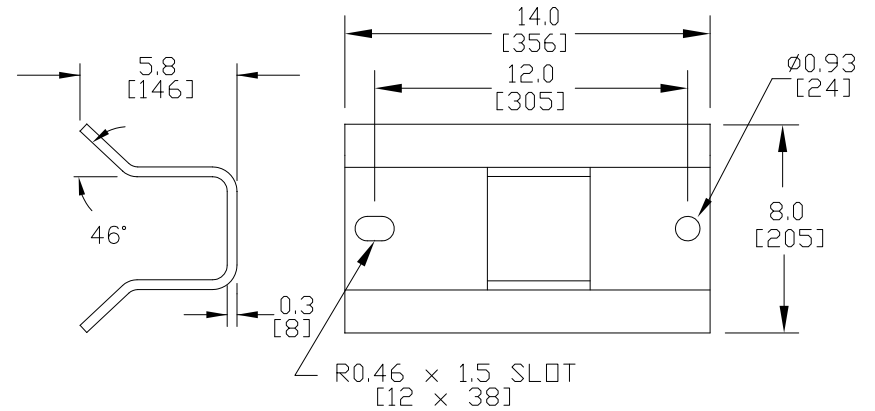
Mechanical Values \_\_\_\_\_

Max. Design Cant. Load (MDCL) \_\_\_\_\_ 3,015 lbs 13.4 kN

Specified Cant. Load (SCL) \_\_\_\_\_ 6,030 lbs 26.8 kN

Specified Tensile Load (STL) \_\_\_\_\_ 15,000 lbs 66.7 kN

This drawing contains confidential information that is the property of MacLean Power, L.L.C. ("MacLean"). Use of MacLean's confidential information without MacLean's express written consent is strictly prohibited and may expose you to legal liability. If you believe that you received this material in error, please destroy it or return it to "MacLean Power, L.L.C., 7801 Park Place Rd., York, South Carolina 29745, USA."



Dimension: inches [millimeters]

NOTE: Drawing not actual depiction of insulator appearance

Silicone Rubber Sheath &amp; Sheds. Complies with applicable ANSI and IEC standards.