

MPS Catalog Number:

**H2 90 10 076 CX SS 046**

Date:

05/20/2021

**End Fittings**

Tower End Fitting:

Gain / 12 deg / Steel

Line End Fitting:

Anchor / Ductile Iron  
2 HL Drop Tongue / Galv. Ductile Iron

**Material**

Corona Ring (Tower):

None

Corona Ring (Line):

None

Corona Rings are recommended for applications of 230 kV and above

Mounting Angle:

12 deg

Number of Sheds:

46

Rod Diameter:

2.5 in

Weight Estimate:

102.3 lbs

46 kg

**Dimensional Values**

Section Length (L):

85.6 in      2,174 mm

Rubber Length (X):

76 in      1,930 mm

Shed spacing (S):

1.6 in      41 mm

Shed Projection (P):

2.4 in      61 mm

Dry Arc Distance:

78.9 in      2,004 mm

Leakage Distance:

283 in      7,188 mm

**Electricals Values**

60 Hz dry Flashover (Min. Withstand):

723 kV      678 kV

60 Hz Wet Flashover (Min. Withstand):

657 kV      532 kV

CIFO Positive (Min. Withstand):

1269 kV      1118 kV

CIFO Negative (Min. Withstand):

1296 kV      1169 kV

**Mechanical Values**

Max. Design Cant. Load (MDCL):

1,018 lbs      4.5 kN

Specified Cant. Load (SCL):

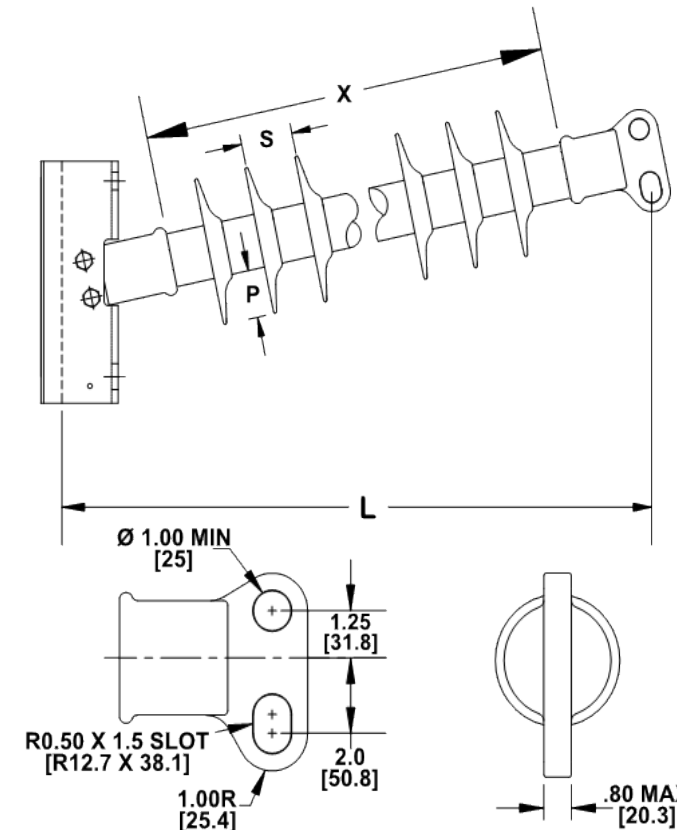
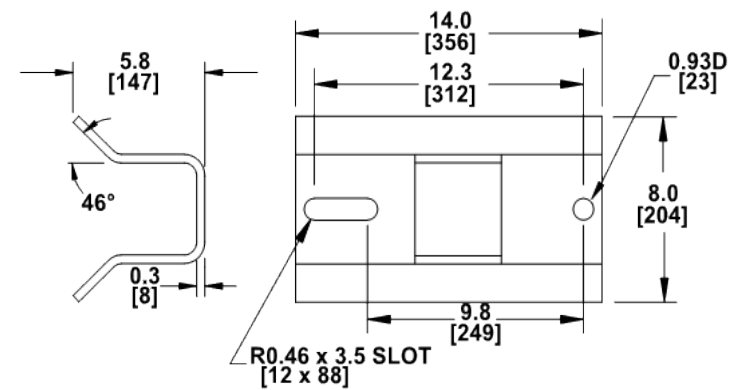
2,036 lbs      9.1 kN

Specified Tensile Load (STL):

15,000 lbs      66.7 kN

This drawing contains confidential information that is the property of MacLean Power, L.L.C. ("MacLean"). Use of MacLean's confidential information without MacLean's express written consent is strictly prohibited and may expose you to legal liability. If you believe that you received this material in error, please destroy it or return it to "MacLean Power, L.L.C., 7801 Park Place Rd., York, South Carolina 29745, USA."

Notes:



Dimension: inches [millimeters]

NOTE: Drawing not actual depiction of insulator appearance.

Silicone rubber sheath and sheds complies with applicable ANSI and IEC standards.

Prepared By: Laurel Wallace