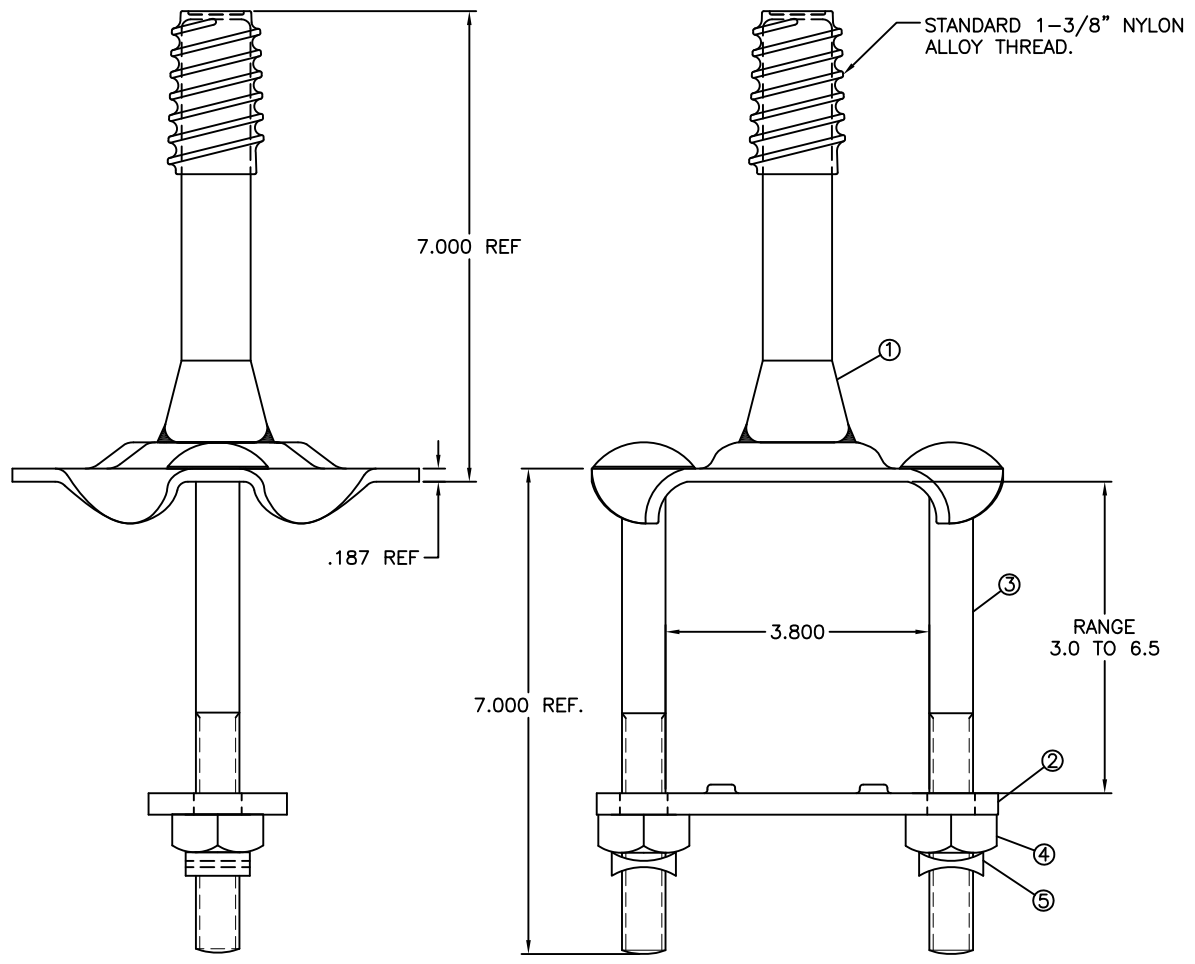


A | B | C | D | E | F

PAPER SIZE	DRAWING NUMBER	
B SIZE	GD-J3324Z	
REV	REVISION DATE	ECO
A	06-11-19	D9557



ITEM	QTY	DESCRIPTION
1	1	CLAMP PIN NA 1-3/8"
2	1	STRAP
3	2	CARRIAGE BOLT 1/2"
4	2	REGULAR SQUARE NUT 1/2"
5	2	M-F LOCKNUT 1/2"

**NOTES:**

- 1) ALL DIMENSIONS ARE REFERENCE AND IN INCHES.
- 2) ALL ITEMS HOT DIP GALVANIZED EXCEPT 1.375 NYLON THREAD. WORKMANSHIP PER ASTM A153.
- 3) CLAMP PIN SHALL WITHSTAND A 1500 LB LOAD APPLIED AT THE TOP OF THE PIN IN ANY DIRECTION WITH A MAXIMUM OF 10° DEFLECTION.

CATALOG # J3324Z

This drawing contains confidential information that is the property of MacLean Power, L.L.C. ("MacLean"). Use of MacLean's confidential information without MacLean's express written consent is strictly prohibited and may expose you to legal liability. If you believe that you received this material in error, please destroy it or return it to "MacLean Power, L.L.C., 11411 Addison, Franklin Park, Illinois 60131, USA."

TOLERANCES UNLESS SPECIFIED	
MEASURE	
0.XX	----
0.XXX	----
ANGLE	----



DRAWN BY	ENGINEER	CHECKER	CATALOG #	SCALE	DESIGN DATE
MTT	RRL	MTT	J3324Z	NTS	03-04-09
DRAWING TITLE / DESCRIPTION					DRAWING NUMBER
CLAMP / PIN / NA / THD					GD-J3324Z