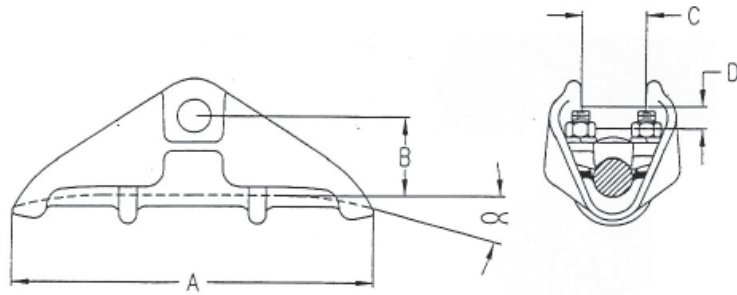




Corona Free and Formula Type Suspension Clamps



Aluminum Corona Free Suspension Clamps

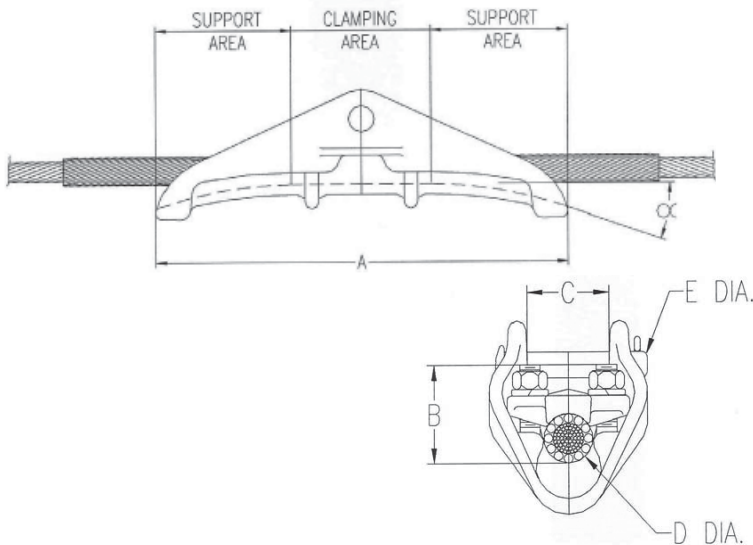
Material

Body and Keeper: Aluminum alloy
 Hardware: Steel hot dip galvanized
 Cotter Keys: Stainless steel

Catalog Number	Cable Range Inches	Dimensions				U-Bolts		Option Fitting			Angle (°)	Ultimate Strength	Weight /100 (lbs)
		A	B	C	D	No	Size	Socket (-S)	Clevis (-C)	Y-Clevis (-Y)			
CF-111-N	1.00 - 1.11	10.50	2.25	1.88	5/8	2	1/2	SI-1750	SCE-55-1750	RYCI-65-1750	15	25000	405
CF-120-N	1.11 - 1.20	10.50	2.25	1.88	5/8	2	1/2	SI-1750	SCE-55-1750	RYCI-65-1750	15	25000	415
CF-143-N	1.20 - 1.43	10.50	2.44	1.88	5/8	2	1/2	SI-1750	SCE-55-1750	RYCI-65-1750	15	25000	460
CF-163-N	1.43 - 1.63	11.50	2.63	2.38	5/8	2	1/2	SI-2187	SCE-55-2187	RYCI-65-2187	15	25000	500
CF-184-N	1.63 - 1.84	11.50	2.88	2.50	5/8	2	1/2	SI-2187	SCE-55-2187	RYCI-65-2187	15	25000	510
CFA-111-N	1.00 - 1.11	13.00	2.38	1.88	5/8	2	1/2	SI-1750	SCE-55-1750	RYCI-65-1750	30	25000	440
CFA-120-N	1.11 - 1.20	13.00	2.25	1.88	5/8	2	1/2	SI-1750	SCE-55-1750	RYCI-65-1750	30	25000	440
CFA-143-N	1.20 - 1.43	13.00	2.44	1.88	5/8	2	1/2	SI-1750	SCE-55-1750	RYCI-65-1750	30	25000	490
CFA-204-N	1.82 - 2.04	13.75	3.17	2.75	5/8	2	1/2	SI-2187	SCE-55-2187	RYCI-65-2187	30	25000	610

Notes:

- 1) Suffix "-N" indicates no connector fitting
- 2) Add suffix "-S" for socket fitting
- 3) Add suffix "-C" for clevis fitting
- 4) For bundled conductor usage change suffix to "-Y"
- 5) Type CF and CFA suspension clamps are corona free when used with correctly designed connecting hardware. CF clamps are generally used on tangent applications and CFA clamps are generally used on running angles. U-Bolts are inverted and retained in place by neoprene fommets during installation.



Aluminum Formula Type Suspension Clamps

Features

- Corona free design

Material

Body and Keeper: Aluminum alloy
 Hardware: Steel hot dip galvanized
 Cotter Keys: Stainless steel

Catalog Number	Dimensions					Option Fitting			Angle (°)	Ultimate Strength	Weight /100 (lbs)
	A	B	C	D	E	Socket (-S)	Clevis (-C)	Y-Clevis (-Y)			
ACFS-175-20-20-N	20.00	3.25	2.38	1.63 - 1.75	5/8	SI - 2187	SCE - 55 - 2187	RYCI - 65 - 2187	20	20000	
ACFS-186-20-20-N	20.00	3.25	2.50	1.76 - 1.86	5/8	SI - 2187	SCE - 55 - 2187	RYCI - 65 - 2187	20	20000	1160
ACFS-214-20-20-N	20.00	3.25	2.50	2.04 - 2.14	5/8	SI - 2187	SCE - 55 - 2187	RYCI - 65 - 2187	20	20000	1136
ACFS-244-20-20-N	20.00	3.25	2.88	2.28 - 2.44	5/8	SI - 2500	SCE - 55 - 2500	RYCI - 65 - 2500	17	20000	1233

Notes:

- 1) Above formula clamps are designed based on NSC heavy loading with 40% of conductor rated strength. To find out if the above clamps meet your application specification, a design data sheet is required.
- 2) For turns, please provide data information for specific clamp
- 3) Add suffix "-N" for no fittings
- 4) Add suffix "-S" for socket eye
- 5) Add suffix "-Y" for 90 degree Y-Clevis eye