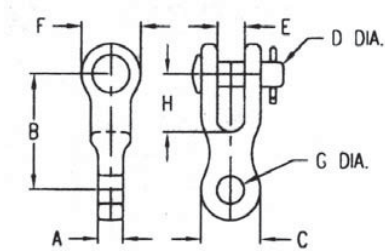




Clevis Type Insulator Fittings

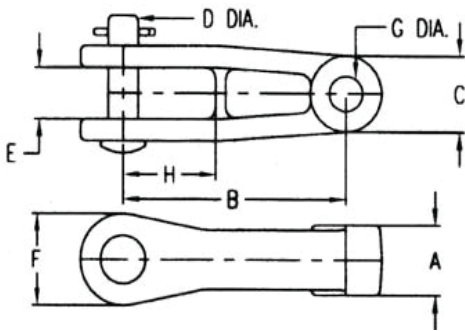


Clevis - Eye, 90 Standard (RCE) Fitting

Material

Ductile iron hot dip galvanized

| Catalog Number | A | B | C | D | E | F | G | H | Ultimate Strength (lbs) | Weight /100 (lbs) |
|----------------|--------|--------|-------|-----|-------|--------|-------|---------|-------------------------|-------------------|
| RCE-55-625 | 5/8 | 2 7/8 | 1 1/2 | 5/8 | 11/16 | 1 1/2 | 11/16 | 1 | 18000 | 135 |
| RCE-55-750 | 3/4 | 2 3/8 | 2 1/2 | 5/8 | 1 | 2 | 11/16 | 1 3/8 | 30000 | 145 |
| RCE-55-750A | 3/4 | 2 7/8 | 1 1/2 | 5/8 | 11/16 | 1 1/2 | 11/16 | 1 1/4 | 18000 | 140 |
| RCE-55-1125 | 1 1/8 | 2 7/8 | 1 5/8 | 5/8 | 13/16 | 1 1/8 | 11/16 | 1 5/16 | 25000 | 148 |
| RCE-55-1375 | 1 3/8 | 2 7/8 | 1 1/2 | 5/8 | 13/16 | 1 1/8 | 11/16 | 1 7/8 | 25000 | 171 |
| RCE-55-1750 | 1 3/4 | 2 7/8 | 1 3/8 | 5/8 | 13/16 | 1 1/8 | 11/16 | 1 7/8 | 30000 | 190 |
| RCE-55-2000 | 2 | 2 7/8 | 1 5/8 | 5/8 | 7/8 | 1 1/8 | 11/16 | 1 7/8 | 30000 | 205 |
| RCE-55-2187 | 2 3/16 | 2 7/8 | 1 5/8 | 5/8 | 7/8 | 1 1/8 | 11/16 | 1 5/16 | 30000 | 210 |
| RCE-55-2500 | 2 1/2 | 2 7/8 | 1 5/8 | 5/8 | 7/8 | 1 1/8 | 11/16 | 1 7/8 | 30000 | 215 |
| RCE-65-687 | 11/16 | 2 | 2 3/8 | 3/4 | 1 | 1 3/4 | 11/16 | 1 3/4 | 30000 | 145 |
| RCE-66-812 | 13/16 | 3 1/2 | 2 1/4 | 3/4 | 1 | 2 5/16 | 13/16 | 1 5/8 | 40000 | 190 |
| RCE-66-1000 | 1 | 2 9/16 | 1 3/4 | 3/4 | 13/16 | 2 | 13/16 | 1 11/16 | 30000 | 198 |
| RCE-66-1125 | 1 1/8 | 3 | 1 3/4 | 3/4 | 15/16 | 1 7/8 | 13/16 | 2 1/8 | 30000 | 200 |



Clevis - Eye, Long

Material

Ductile iron hot dip galvanized

| Catalog Number | A | B | C | D | E | F | G | H | Ultimate Strength (lbs) | Weight /100 (lbs) |
|----------------|-------|-------|---------|-----|--------|---------|--------|--------|-------------------------|-------------------|
| RCEL-65-1250 | 1 1/4 | 5 1/2 | 1 3/4 | 3/4 | 1 1/8 | 2 1/8 | 11/16 | 2 5/16 | 40000 | 340 |
| RCEL-65-1375 | 1 3/8 | 5 1/2 | 1 3/4 | 3/4 | 1 1/8 | 1 7/8 | 11/16 | 2 5/16 | 30000 | 340 |
| RCEL-66-1250 | 1 1/4 | 5 1/2 | 1 3/4 | 3/4 | 1 1/8 | 2 1/8 | 13/16 | 2 5/16 | 40000 | 340 |
| RCEL-66-1375 | 1 3/8 | 5 1/2 | 1 3/4 | 3/4 | 1 1/8 | 1 7/8 | 13/16 | 2 5/16 | 40000 | 340 |
| RCEL-66-1500 | 1 1/2 | 5 1/2 | 1 15/16 | 3/4 | 1 1/8 | 1 15/16 | 13/16 | 2 1/8 | 40000 | 355 |
| RCEL-66-1750 | 1 3/4 | 5 1/2 | 1 3/4 | 3/4 | 1 1/8 | 2 1/4 | 13/16 | 2 5/16 | 45000 | 380 |
| RCEL-67-937 | 15/16 | 5 5/8 | 2 1/2 | 3/4 | 1 1/4 | 2 1/4 | 15/16 | 2 1/2 | 50000 | 390 |
| RCEL-68-1125 | 1 1/8 | 5 1/2 | 1 3/4 | 3/4 | 1 1/8 | 2 1/8 | 1 1/16 | 2 5/16 | 36000 | 565 |
| RCEL-68-15000 | 1 1/2 | 5 1/2 | 1 15/16 | 3/4 | 1 1/8 | 1 15/16 | 1 1/16 | 2 1/8 | 40000 | 395 |
| RCEL-69-1250 | 1 1/4 | 5 1/2 | 2 3/8 | 3/4 | 1 | 2 1/8 | 1 3/16 | 2 5/16 | 40000 | 475 |
| RCEL-77-1250 | 1 1/4 | 5 1/2 | 2 5/8 | 7/8 | 1 3/8 | 2 1/2 | 15/16 | 2 3/4 | 60000 | 555 |
| RCEL-77-1625 | 1 5/8 | 5 1/2 | 2 1/4 | 7/8 | 158/16 | 2 1/2 | 15/16 | 2 3/4 | 60000 | 560 |
| RCEL-78-1250 | 1 1/4 | 5 1/2 | 2 5/8 | 7/8 | 1 3/8 | 2 1/2 | 1 1/16 | 2 3/4 | 60000 | 555 |
| RCEL-79-1250 | 1 1/4 | 5 1/2 | 2 5/8 | 7/8 | 1 3/8 | 2 1/2 | 1 3/16 | 2 3/4 | 60000 | 555 |

Notes:

1) For bolt, nut and cotter instead of clevis pin and cotter, add suffix "-BC" to catalog number