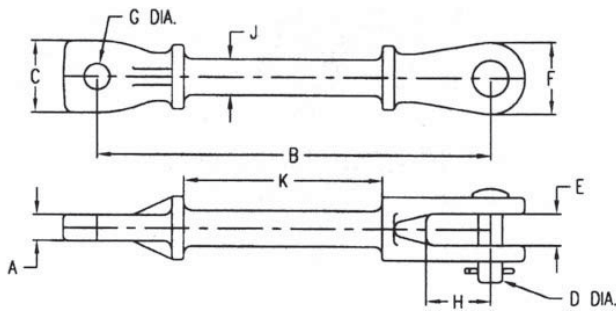




# Clevis Type and Oval Eye Type Insulator Fittings



## Clevis - Eye, Hot Line

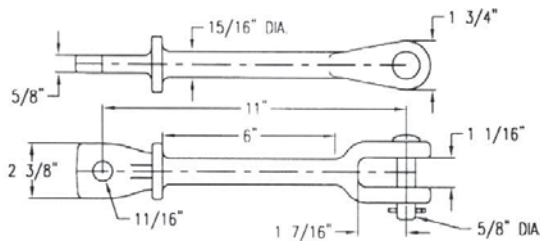
### Material

Ductile iron hot dip galvanized

Catalog Number	A	B	C	D	E	F	G	H	J	K	Ultimate Strength (lbs)	Weight /100 (lbs)
CEHL-55-625	5/8	7 3/8	2	5/8	13/16	1 7/8	11/16	1 1/2	15/16	2 15/16	30000	240
CEHL-55-687	11/16	11	2 1/8	5/8	1 1/8	2	11/16	1 1/2	15/16	6 1/8	30000	331
CEHL-56-1625	1 5/8	10	1 3/4	5/8	3/4	1 7/8	13/16	1	15/16	5 7/16	30000	346
CEHL-66-812	13/16	12 3/8	2 1/4	3/4	1	2 1/4	13/16	2	1 1/8	6 1/4	40000	600

### Notes:

1) For bolt, nut and cotter instead of clevis pin and cotter, add suffix "-BC" to catalog number



## Clevis - Eye, Hot Line 90 Degrees

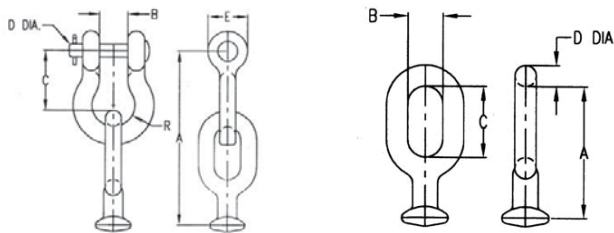
### Material

Ductile iron hot dip galvanized

Catalog Number	Ultimate Strength (lbs)	Weight /100 (lbs)
RCEHL-55-625	30000	285

### Notes:

1) For bolt, nut and cotter instead of clevis pin and cotter, add suffix "-BC" to catalog number



## Oval Eye - Ball

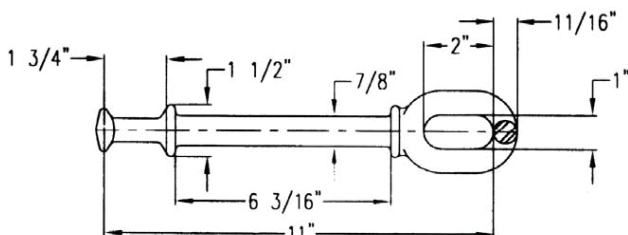
### Material

Forged steel hot dip galvanized

Catalog Number	For Insulator Class	A	B	C	D	E	R	Ultimate Strength (lbs)	Weight /100 (lbs)
ASBE-55	*ANSI 52-3 & 5	6 1/2	7/8	2 1/8	5/8	1 1/2	11/16	30000	222
ASBE-65A	*ANSI 52-3 & 5	7 1/4	7/8	2 13/16	3/4	1 7/8	38/4	35000	257
ASBE-86	*ANSI 52-8	7 3/8	1 1/16	2 1/8	3/4	1 3/4	3/4	40000	317
OEB-55	*ANSI 52-3 & 5	3 3/4	1	2	11/16	--	--	35000	110
OEB-68	ANSI 52-8 & 11	4 5/8	1 1/4	2 1/2	3/4	--	--	50000	170

### Notes:

1) ANSI 52-5 & IEC 16mm are generally accepted as being interchangeable



## Oval Eye - Ball, Hot Line Link

### Material

Forged steel hot dip galvanized

Catalog Number	For Insulator Class	Ultimate Strength (lbs)	Weight /100 (lbs)
OEBHL-55	ANSI 52-3 & 5	35000	270

### Notes:

1) ANSI 52-5 & IEC 16mm are generally accepted as being interchangeable