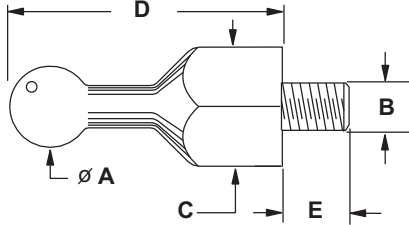




Grounding Ball Studs



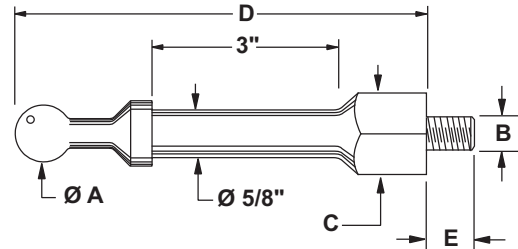
Grounding Ball Studs

Features

- Permanent grounding ball studs permit universal and ball stud clamps to be used for different electrical systems such as apparatus, bus bar, conductors, vehicles, reels, etc
- Spherical form of grounding ball stud permits installation of grounding clamp at various angles to reach the most inaccessible areas
- Meets ASTM and IEC standards
- Stainless steel hardware (washer, lock washer, and nut) included (if applicable)

Material

99.9% electrolytic tin-plated copper



Catalog Number	Dimensions					Weight
	A	B	C	D	E	
03-M-006	20 mm	1/2 - 13	7/8	2 15/16	no screw	0.2
03-M-006-0.5	20 mm	1/2 - 13	7/8	2 15/16	1/2	0.3
03-M-006-1*	20 mm	1/2 - 13	7/8	2 15/16	1	0.4
03-M-026	20 mm	1/2 - 13	7/8	4	no screw	0.6
03-M-026-0.5	20 mm	1/2 - 13	7/8	4	1/2	0.7
03-M-026-1*	20 mm	1/2 - 13	7/8	4	1	0.7
HC-30015	20 mm	1/2 - 13	7/8	6	no screw	0.8
HC-30015-0.5	20 mm	1/2 - 13	7/8	6	1/2	0.9
HC-30015-1*	20 mm	1/2 - 13	7/8	6	1	0.9
03-M-027	20 mm	5/8 - 11	1	4	no screw	0.8
03-M-027-0.5	20 mm	5/8 - 11	1	4	1/2	0.9
03-M-027-1*	20 mm	5/8 - 11	1	4	1	0.9
HC-30028	20 mm	5/8 - 11	1	2 5/8	no screw	0.7
HC-30028-0.5	20 mm	5/8 - 11	1	2 5/8	1/2	0.8
HC-30028-1*	20 mm	5/8 - 11	1	2 5/8	1	0.8
HC-30029	25 mm	1/2 - 13	1	3	no screw	0.5
HC-30029-0.5	25 mm	1/2 - 13	1	3	1/2	0.6
HC-30029-1*	25 mm	1/2 - 13	1	3	1	0.6
HC-30036	25 mm	1/2 - 13	1	6 1/4	no screw	1.1
HC-30036-0.5	25 mm	1/2 - 13	1	6 1/4	1/2	1.2
HC-30036-1*	25 mm	1/2 - 13	1	6 1/4	1	1.2
HC-30037	25 mm	5/8 - 11	1	3	no screw	0.4
HC-30033	25 mm	5/8 - 11	1	3	1/2	0.5
HC-30037-1*	25 mm	5/8 - 11	1	3	1	0.5
HC-30012	30 mm	5/8 - 11	1 1/2	4 3/8	no screw	1.8
HC-30012-0.5	30 mm	5/8 - 11	1 1/2	4 3/8	1/2	1.9
HC-30012-1*	30 mm	5/8 - 11	1 1/2	4 3/8	1	1.9

Notes:

- 1) * - hardware included
- 2) HC-30033 used as grounding ball stud on 01-M-037
- 3) Other length for "E" available upon request (e.g. HC-30029-3.5 for 3.5" length)
- 4) 20 mm and 25 mm grounding ball studs are rated for 35kA per IEC 61230 and 43kA per ASTM R855
- 5) 30 mm grounding ball studs are rated for 60kA per IEC 61230 and 74kA per ASTM R855