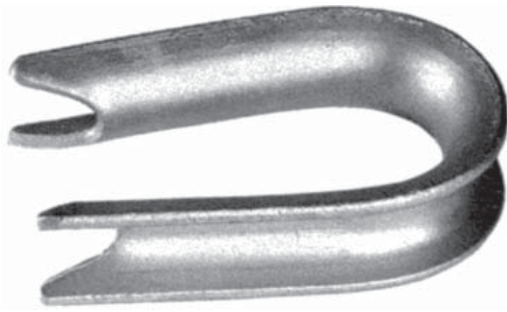




Thimbles and Washers



Open Wire Rope

Wire rope thimbles provide a more desirable, larger wire seat diameter when terminating grips, deadend bails and cable to small diameter eye type fittings and bolts.

Material

Steel hot dip galvanized

Catalog Number	Seat Dia	Strand Dia	Opening Width	Eye Length	Weight /100 (lbs)
J1057	7/8	3/8	5/8	1 7/8	8.8
J1058	1 1/8	1/2	3/4	2	18.4
J1059	1 1/4	5/8	15/16	2 7/32	31.0

Cast, Curved

Features

- Greater strength and added resistance to corrosion
- Reinforced rib design to put metal where strength requirements indicate
- Includes a heavy boss around the bolt hole
- Radial ribs extend from the boss to the outer edges of the washer to reinforce the washer against compression or dishing loads

Material

Ductile iron hot dip galvanized or aluminum alloy

Aluminum Alloy						
Catalog Number	A	B	C	D	Max Bolt Dia	Weight/ 100 (lbs)
WC-23-6	2 1/4	3 1/2	9/16	13/16	3/4	25
WC-33-5	3	3	7/16	11/16	5/8	25
WC-33-6	3	3	9/16	13/16	3/4	24
WC-34-7	3	4	9/16	15/16	7/8	39
WC-44-6	4	4	9/16	13/16	3/4	44

Ductile Iron Hot Dip Galvanized

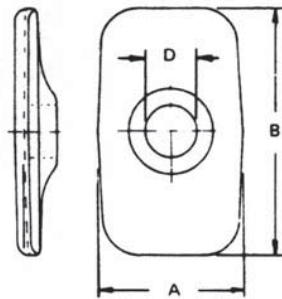
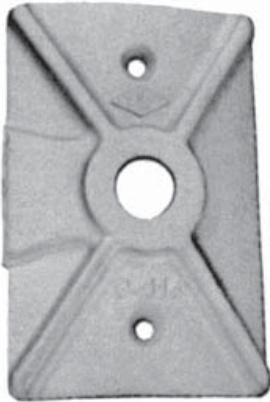
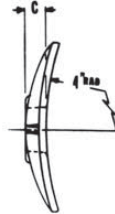
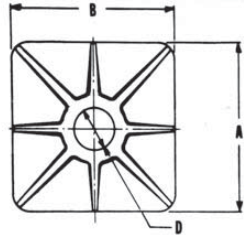
Catalog Number	A	B	C	D	Max Bolt Dia	Weight/ 100 (lbs)
CW-33-5	3	3	5/16	11/16	5/8	60
CW-33-6	3	3	3/8	13/16	5/8 - 3/4	60
CW-34-7	3	4	7/16	15/16	3/4 - 7/8	65
CW-35-7	3	5	1/2	15/16	3/4 - 7/8	120
P141A	2 1/4	2 1/4	1/4	13/16	5/8 - 3/4	22
P142A	3 1/2	2 1/4	5/16	13/16	5/8 - 3/4	56
CW-44-6	4	4	7/16	13/16	5/8 - 3/4	105
CW-44-7	4	4	7/16	13/16	5/8 - 3/4	105
CW-44-8	4	4	7/16	1 1/16	7/8 - 1	100
CW-46-7	4	6	1/2	15/16	3/4 - 7/8	200
CW-46-8	4	6	1/2	1 1/16	7/8 - 1	190

Cast, Flat

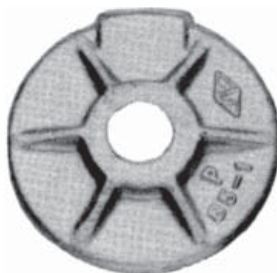
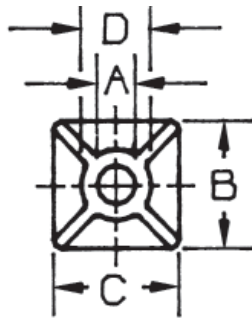
Material

Ductile iron hot dip galvanized

Catalog Number	A	B	C	D	Thickness	Weight/ 100 (lbs)
P56A	13/16	2 1/4	2 1/4	1 1/4	9/32	18
P84A-1	13/16	3 1/2	1 1/2		1/2	73



P56A



P84A-1

