



# Braces

## Crossarm, Wood

MPS wood crossarm braces are design engineered to support wood crossarms to provide durability, strength and extended service life. MPS wood crossarm braces have better insulation properties than conductive metal braces.

### Features

- Lightweight alternative to steel crossarm braces
- Corrosion resistant aluminum end fittings
- Tongue and groove configuration permanently pins end fitting to wood
- Preservative treated, extra strong Apitong wood resists insect, fungus and environmental attack
- Reversible style eliminates need for left- / right-hand braces
- Available in underarm and sidearm styles
- Sold in pairs

### Material

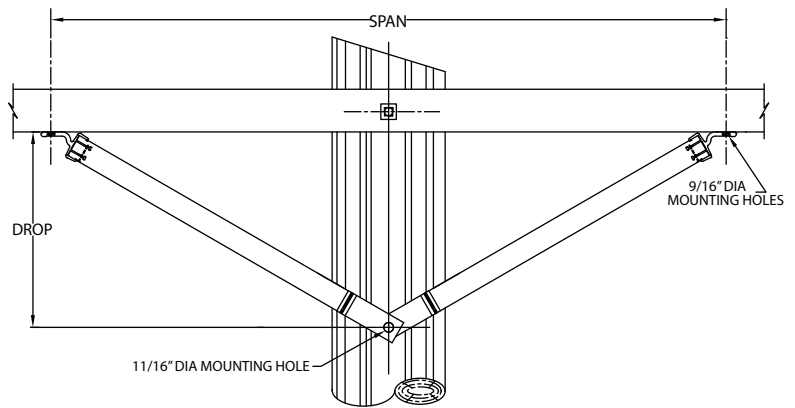
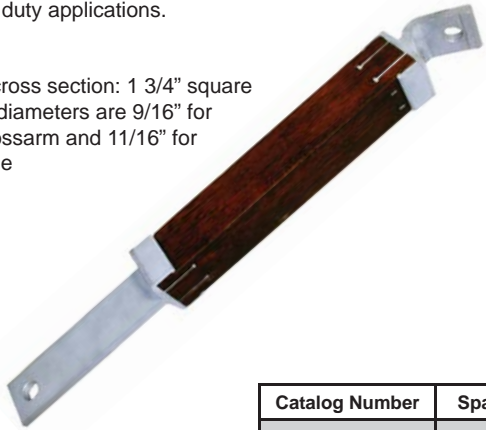
End Fittings: Aluminum alloy  
Brace: Preservative treated Apitong wood

## Underarm Style

MPS underarm style wood crossarm braces are used for heavier duty applications.

### Features

- Apitong wood cross section: 1 3/4" square
- Mounting hole diameters are 9/16" for mounting to crossarm and 11/16" for mounting to pole



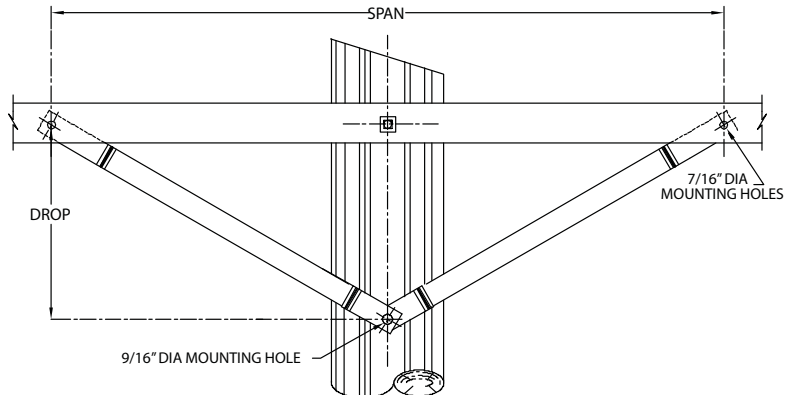
Catalog Number	Span (in)	Drop (in)	Weight / pair (lbs)
JA4730R	60	30	8.0
JA4760R	60	18	6.6
JA4761R	60	26	7.5
JA4766R	66	20	7.2
JA4772R	72	22	7.9
JA4788R	48	18	5.6

## Sidearm Style

MPS sidearm style wood crossarm braces are used for lighter duty applications.

### Features

- Apitong wood cross section: 3/4 x 1 3/4"
- Mounting hole diameters are 7/16" for mounting to crossarm and 9/16" for mounting to pole



Catalog Number	Span (in)	Drop (in)	Weight / pair (lbs)
JA5526	38	18	2.4