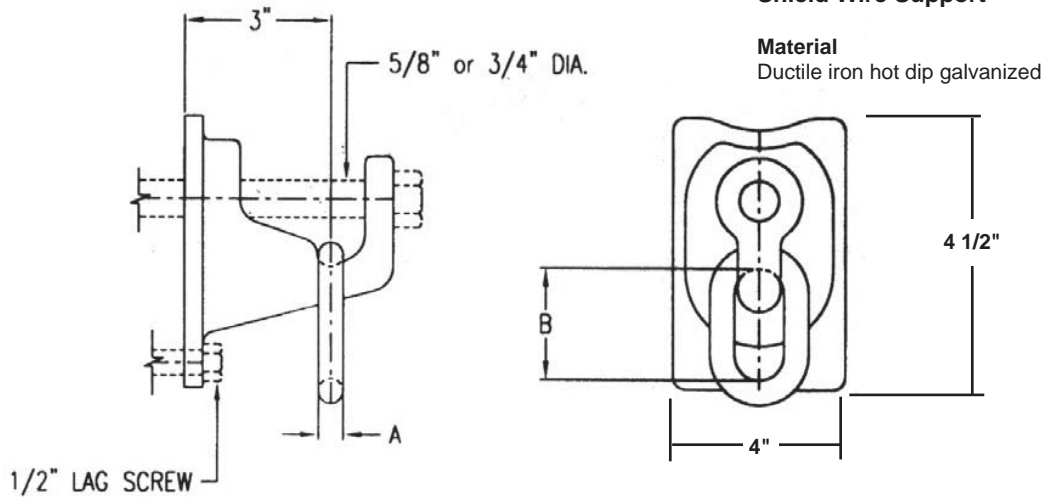




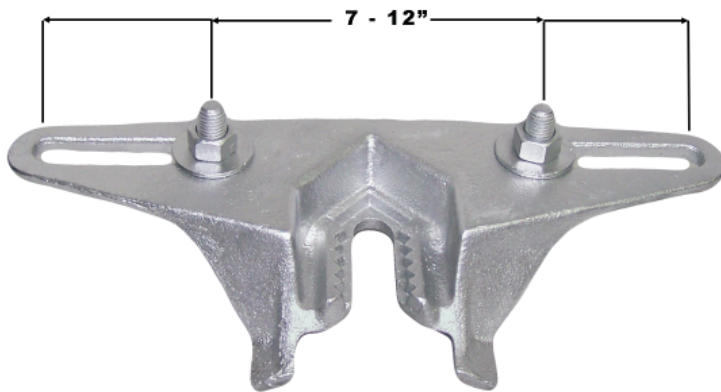
Brackets

Shield Wire Support



Material
Ductile iron hot dip galvanized

Catalog Number	A	B	Minimum Ultimate Strength	Weight (lbs)
SWBR-6-4-L	5/8	3 1/4	20000	4



Transformer Mounts

MPS transformer mounting brackets are used in heavy duty applications for mounting transformers 167 - 500kVA.

Features

- Locking slot for a 3/4" diameter pole mounting bolt
- Recessed notched slot for locking through bolt and adjusting vertical spacing
- Can be installed on the transformer prior to the installation of assembly on pole
- Furnished with (2) 5/8" diameter bolts, nuts and washers for attachment to transformer
- Accommodates maximum 4000 lbs transformer weight

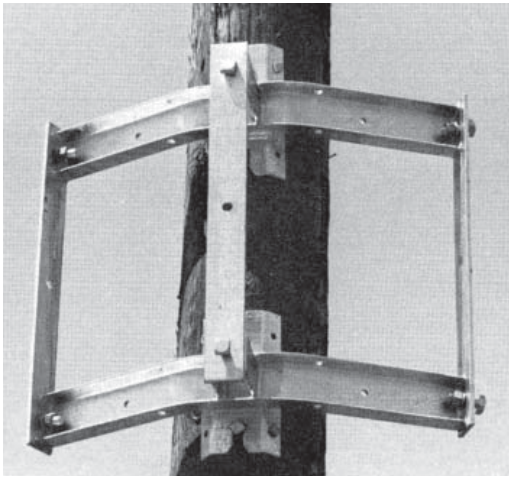
Material

Ductile iron hot dip galvanized

Catalog Number	Mounting Bolts		Distance from Pole to Transformer	Lug Spacing	Weight /100 (lbs)
	Transformer	Pole			
TB-4	5/8	3/4	2 1/2	7 - 14"	900



Brackets



Transformer Mounts

These transformer mounting brackets can be used to mount three transformers on the pole ranging from 3 kVA to 50kVA with the J6865 bracket or 75 kVA to 333 kVA with the J6866 bracket.

Features

- One-piece design makes installation easier by making them lighter
- Can be assembled with transformer on ground then installed on pole as one unit

J6865 Features

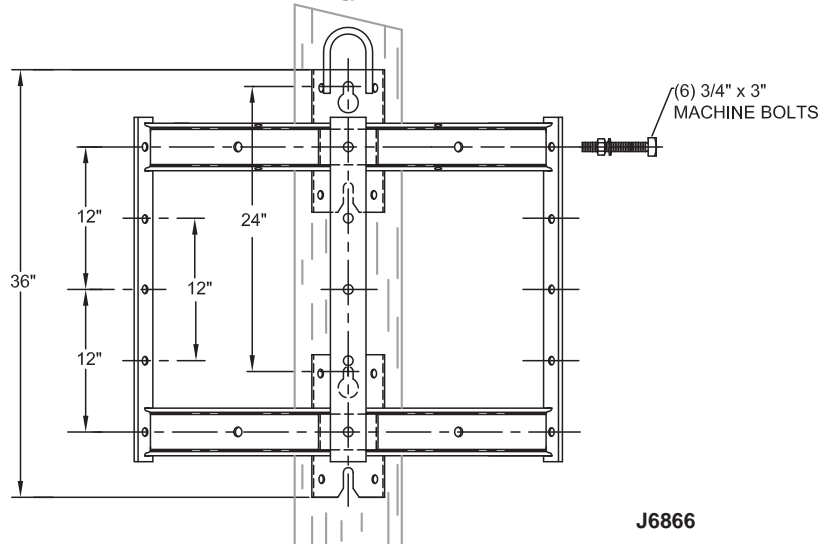
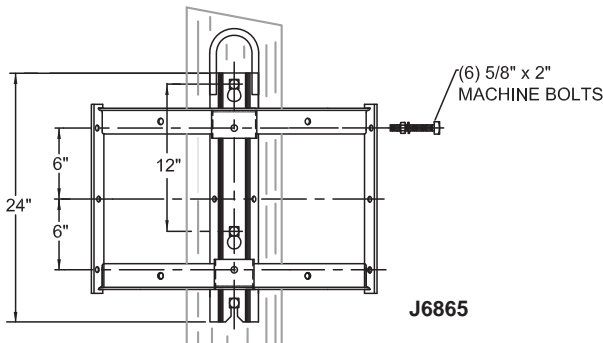
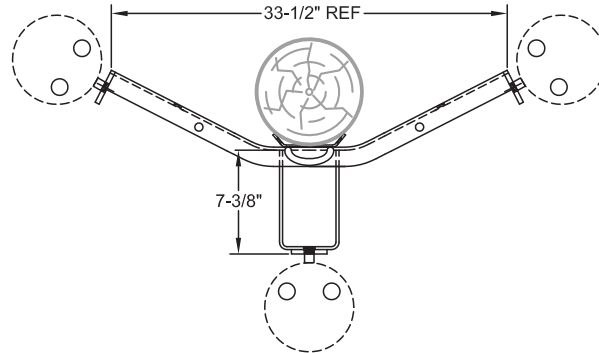
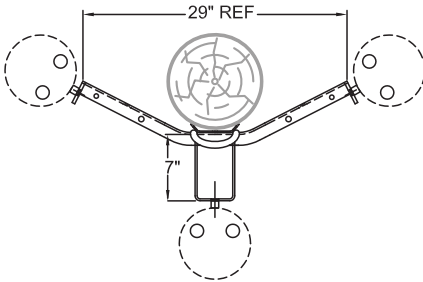
- 12" lug centers for mounting 3 transformers
- (6) 5/8 x 2" machine bolts included for bolting transformers to rack
- Secured to pole with (2) 3/4" machine bolts and (2) 1/2" lag screws for stability
- Holes are provided for a groundwire lug
- Strength capacity of 2000 per position

J6866 Features

- 24" mounting hole spacing
- Each position is designed to accommodate ANSI type "B" lug spacing
- (6) 3/4 x 3" machine bolts included for bolting transformers to rack
- Secured to pole with (2) 3/4" machine bolts and (2) 1/2" lag screws for stability
- Holes are provided for a groundwire lug
- Strength capacity of 5000 per position

Material

Steel hot dip galvanized



Catalog Number	Weight Ea (lbs)
J6865	38
J6866	78