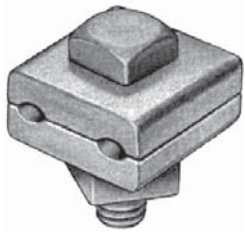
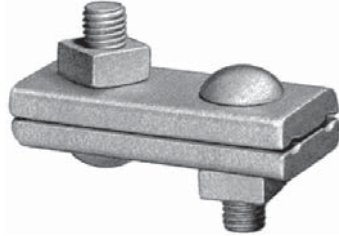




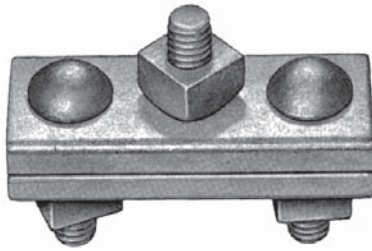
Clamps



One Bolt



Two Bolt



Three Bolt



Guy

Features

- Rolled from carbon steel with straight parallel grooves that will not damage guy strand
- The clamping bolts have special shoulders to prevent turning when the nuts are tightened

Material

Steel hot dip galvanized

Catalog Number	No. of Bolts	Bolt Dia.	Clamping Length	Clamping Width	Strand Dia. Range (in)	Weight /100 (lbs)
J1061	1	1/2	1 1/2	1 9/16	3/16 - 3/8	63
J1030	2	1/2	3 3/8	1 9/16	3/16 - 3/8	126
J929	3	1/2	4	1 9/16	3/16 - 7/16	160
J930	3	1/2	6	1 9/16	3/16 - 7/16	224
J931	3	5/8	6	1 21/32	5/16 - 1/2	256

Static Wire/ Bayonet

Static wire clamps are used to secure 1/4" to 7/16" static wire to bayonet assemblies and steel tower members

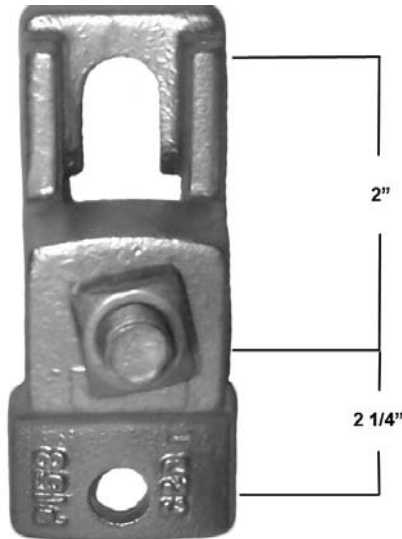
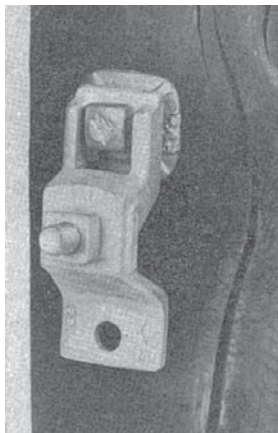
Features

- Consists of two 2 1/2" long rolled steel clamp sections with the groove ends belled out to prevent damage to the wire and one 1/2 x 2 1/2" machine bolt for mounting
- Accommodates 1/4" - 7/16" wire range

Material

Steel hot dip galvanized

Catalog Number	Weight /100 (lbs)
J5455	94



Support Type B Extension

The Support Type B Extension clamp is designed to facilitate adding an additional cable to the opposite side of the pole.

Features

- Installed by loosening the existing 5/8" diameter machine bolt and slipping the clamp support over the head of the bolt
- 5/8 x 2 1/4" machine bolt and nut are included to secure a suspension clamp
- For small inside angles, a 1/2" lag screw may be installed in the base for increased stability

Material

Body: Ductile iron hot dip galvanized
Bolts and nuts: steel hot dip galvanized

Catalog Number	Weight /100 (lbs)
PA158	180