



Utility Anchors

macleanpower.com

 **MacLean**[™]
POWER SYSTEMS

Utility Anchors



MPS Utility Anchors

MacLean Power Systems has served the utility anchor market for over 90 years. With a rich history of quality, innovation and service, MPS products are a proven solution for all utility infrastructure construction and repair. With the recent addition of our new production facility in Trenton, Tennessee, we are excited to offer even more high quality product solutions to the utility market.

Located east of Memphis, the Trenton facility showcases state of the art robotic welding, innovative Computer Numerical Control (CNC) machining and our long standing steel upsetting capacity. We are confident the Trenton facility will continue to meet or exceed industry expectations for high quality products supplied in large quantities in a timely fashion. With our dedicated galvanization plant located across the street, MPS anchors has the products and production capacity to meet your project needs and schedule.



MacLean Power Systems — Trenton Campus, Trenton, Tennessee



Strand vices are also available through MPS



Flatbed shipping to customers across the U.S. and Canada



CNC milling for precision and consistency



Robotic welding for consistent quality



Manta Ray™ Driven Anchors

Utility Anchors — Transmission Anchors

Round Corner Square Helical Anchors



1-1/4 Inch Round Shaft Leads; 7 foot length
2,300 ft-lb Ultimate Installing Torque
23,000 lb Ultimate Tension Load

| Catalog Number | Helix Diameter (in) | Weight (lbs) |
|----------------|---------------------|--------------|
| D6708 | 8 | 40 |
| D6710 | 10 | 42 |
| D6711 | 12 | 43 |
| D6713 | 14 | 45 |
| D6720 | 8, 10 | 48 |
| D6730 | 8, 10, 12 | 57 |

1-1/4 Inch Round Shaft Extensions
2,300 ft-lb Ultimate Installing Torque
23,000 lb Ultimate Tension Load

| Catalog Number | Shaft Length (ft) | Weight (lbs) |
|----------------|-------------------|--------------|
| D6733 | 3.5 | 18 |
| D6735 | 5 | 25 |
| D6737 | 7 | 33 |
| D6740 | 10 | 45 |

1-1/2 Inch Round Corner Square Shaft Leads
5,500 ft-lb Ultimate Installing Torque
55,000 lb Ultimate Tension Load

| Catalog Number | Helix Diameter (in) | Shaft Length (ft) | Weight (lbs) |
|----------------|---------------------|-------------------|--------------|
| D6632 | 8, 10 | 3 | 35 |
| D6634 | 10, 12 | 3.5 | 50 |
| D6636 | 8, 10, 12 | 5.5 | 66 |
| D6637 | 10, 12, 14 | 7 | 91 |
| D6635 | 8, 10, 12, 14 | 10.5 | 126 |
| D6638 | 10, 12, 14, 14 | 10.5 | 136 |

1-1/2 Inch Round Corner Square Shaft Extensions
5,500 ft-lb Ultimate Installing Torque
55,000 lb Ultimate Tension Load

| Catalog Number | Helix Diameter (in) | Shaft Length (ft) | Weight (lbs) |
|----------------|---------------------|-------------------|--------------|
| D6620UC | 12 | 5 | 56 |
| D6620UD | 14 | 5 | 57 |
| D6616U | — | 3.5 | 28 |
| D6620U | — | 5 | 40 |
| D6625U | — | 7 | 55 |
| D6630U | — | 10 | 79 |



1-1/2 Inch Round Corner Square Shaft Leads
7,000 ft-lb Ultimate Installing Torque
70,000 lb Ultimate Tension Load

| Catalog Number | Helix Diameter (in) | Shaft Length (ft) | Weight (lbs) |
|----------------|---------------------|-------------------|--------------|
| D663237 | 8,10 | 3 | 35 |
| D66327 | 8, 10 | 5 | 53 |
| D66347 | 10, 12 | 5 | 60 |
| D66367 | 8, 10, 12 | 7 | 87 |
| D66377 | 10, 12, 14 | 7 | 91 |

1-1/2 Inch Round Corner Square Shaft Extensions
7,000 ft-lb Ultimate Installing Torque
70,000 lb Ultimate Tension Load

| Catalog Number | Helix Diameter (in) | Shaft Length (ft) | Weight (lbs) |
|----------------|---------------------|-------------------|--------------|
| D6616UC7 | 12 | 3.5 | 41 |
| D6616UD7 | 14 | 3.5 | 45 |
| D6616U7 | — | 3.5 | 31 |
| D6620U7 | — | 5 | 41 |
| D6625U7 | — | 7 | 57 |
| D6630U7 | — | 10 | 79 |

1-3/4 Inch Round Corner Square Shaft Leads
10,000 ft-lb Ultimate Installing Torque
100,000 lb Ultimate Tension Load

| Catalog Number | Helix Diameter (in) | Shaft Length (ft) | Weight (lbs) |
|----------------|---------------------|-------------------|--------------|
| D17532 | 8, 10 | 5 | 66 |
| D17534 | 10, 12 | 5 | 74 |
| D17536 | 8, 10, 10 | 7 | 100 |
| D17537 | 10, 12, 14 | 7 | 110 |
| D17538 | 10, 12, 14, 14 | 10 | 159 |

1-3/4 Inch Round Corner Square Shaft Extensions
10,000 ft-lb Ultimate Installing Torque
100,000 lb Ultimate Tension Load

| Catalog Number | Helix Diameter (in) | Shaft Length (ft) | Weight (lbs) |
|----------------|---------------------|-------------------|--------------|
| D2801-0011 | 14 | 5 | 63 |
| D17516 | — | 3.5 | 38 |
| D17520 | — | 5 | 54 |
| D17525 | — | 7 | 75 |
| D17530 | — | 10 | 108 |

2 Inch Round Corner Square Shaft Leads
15,000 ft-lb Ultimate Installing Torque
150,000 lb Ultimate Tension Load

| Catalog Number | Helix Diameter (in) | Shaft Length (ft) | Weight (lbs) |
|----------------|---------------------|-------------------|--------------|
| D1560T810 | 8, 10 | 5 | 88 |
| D1560T1012 | 10, 12 | 5 | 91 |
| D1566T81012 | 8, 10, 12 | 5.5 | 110 |
| D1584T101214 | 10, 12, 14 | 7 | 146 |

2 Inch Round Corner Square Shaft Extensions
15,000 ft-lb Ultimate Installing Torque
150,000 lb Ultimate Tension Load

| Catalog Number | Helix Diameter (in) | Shaft Length (ft) | Weight (lbs) |
|----------------|---------------------|-------------------|--------------|
| D15E42T14 | 14 | 3.5 | 71 |
| D15E60T12 | 12 | 5 | 99 |
| D15E60T14 | 14 | 5 | 104 |
| D15E84T14 | 14 | 7 | 118 |
| D15E42 | — | 3.5 | 63 |
| D15E60 | — | 5 | 84 |
| D15E84 | — | 7 | 97 |
| D15E120 | — | 10 | 135 |



Round Corner Square Guy Terminations



1-1/4 In Round & 1-1/2 In Square Shaft Guy Terminations

| Catalog Number | Eyenuit Design | Length (in) | Weight (lb) |
|----------------|----------------|-------------|-------------|
| D6602US | Thimble Eye | 11 | 7 |
| D6604US | Twin Eye | 11 | 7 |
| D6606US | Triple Eye | 11 | 8 |

1-3/4 In Square Shaft Guy Terminations

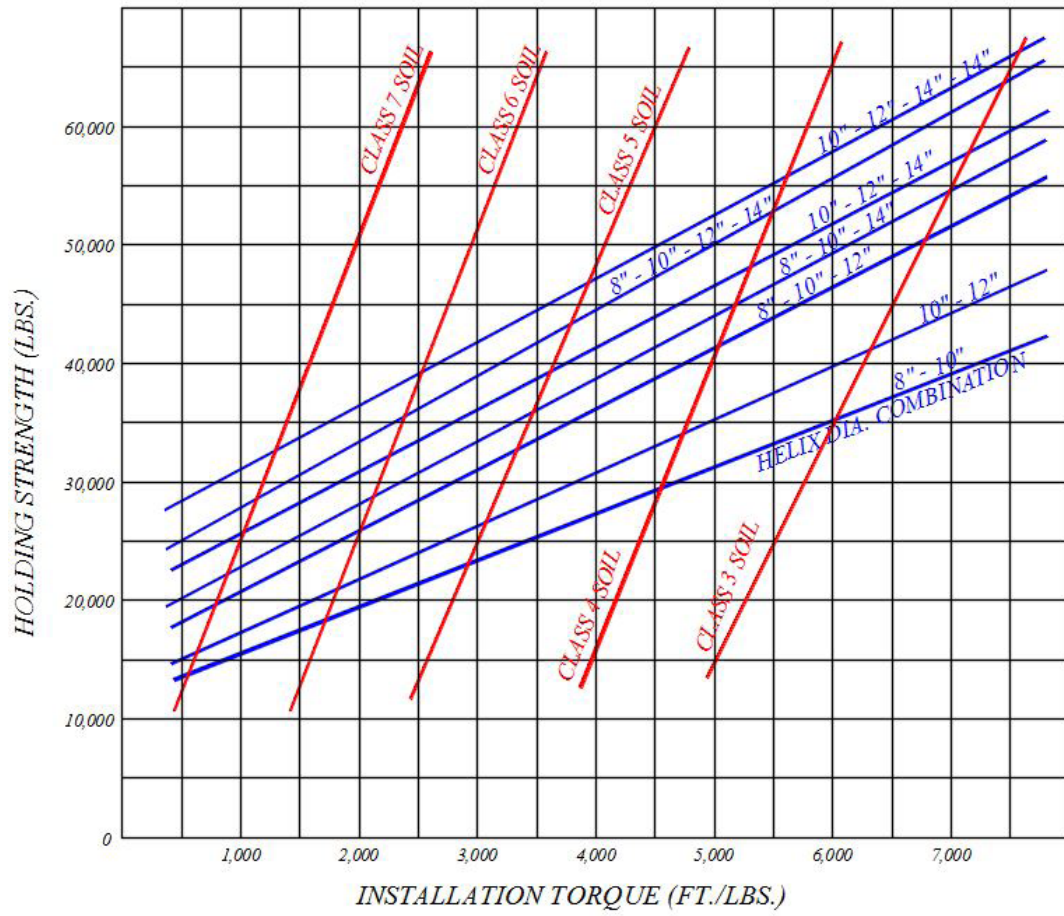
| Catalog Number | Eyenuit Design | Length (in) | Weight (lb) |
|----------------|----------------|-------------|-------------|
| D2801-0002 | Triple Eye | 24 | 25 |

2 Inch Square Shaft Guy Terminations

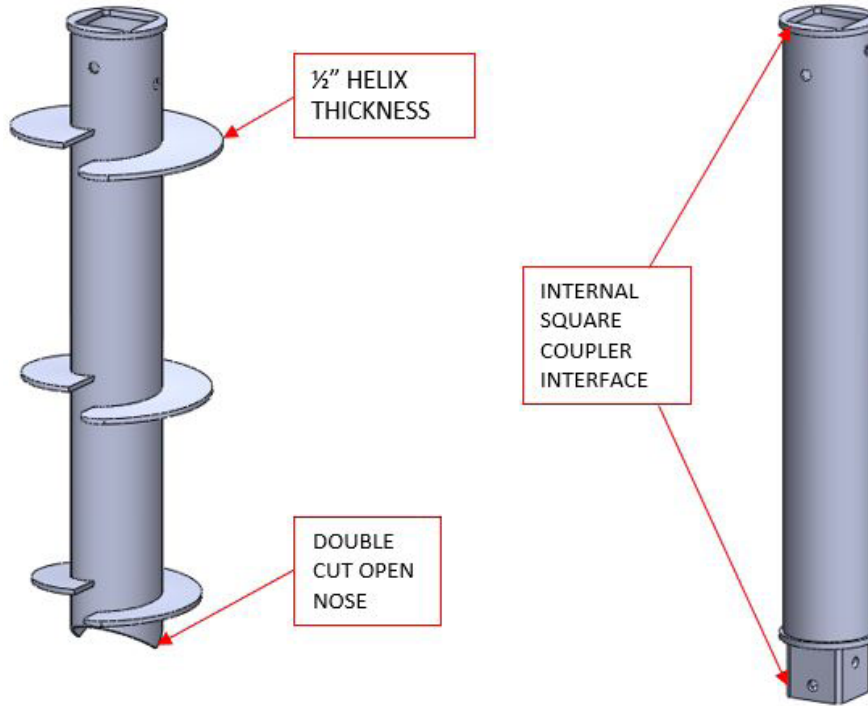
| Catalog Number | Eyenuit Design | Length (in) | Weight (lb) |
|----------------|----------------------|-------------|-------------|
| D150902 | Thimble Eye | 12 | 8 |
| D150906 | Triple Eye | 12.5 | 10 |
| CSH-1009-BC | 100kip Chain Shackle | 4-5/8 | 9 |



HOLDING CAPACITY FOR MULTIPLE - HELIX POWER SHAFT ANCHORS



Utility Anchors — Substation Foundations



8.625" Pipe Pile Leads, 0.188" Wall Thickness

| Catalog Number | Helix Diameter (in) | Shaft Length (ft) | Weight (lbs) |
|----------------|---------------------|-------------------|--------------|
| F86L60T16 | 16 | 5 | 125 |
| F86L60T20 | 20 | 5 | 135 |
| F86L60T1416 | 14, 16 | 5 | 140 |

40,000 ft-lb Ultimate Installing Torque
 150,000 lb Ultimate Tension Load
 200,000 lb Ultimate Compression Load

8.625" Pipe Pile Leads, 0.250" Wall Thickness

| Catalog Number | Helix Diameter (in) | Shaft Length (ft) | Weight (lbs) |
|----------------|---------------------|-------------------|--------------|
| F86M60T16 | 16 | 5 | 152 |
| F86M60T20 | 20 | 5 | 162 |
| F86M60T1416 | 14, 16 | 5 | 167 |

40,000 ft-lb Ultimate Installing Torque
 175,000 lb Ultimate Tension Load
 300,000 lb Ultimate Compression Load

8.625" Pipe Pile Extensions, 0.188" Wall Thickness

| Catalog Number | Shaft Length (ft) | Weight (lbs) |
|----------------|-------------------|--------------|
| F86LE60 | 5 | 122 |
| F86LE84 | 7 | 160 |
| F86LE120 | 10 | 207 |

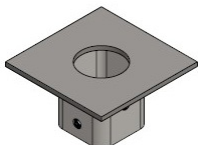
40,000 ft-lb Ultimate Installing Torque
 150,000 lb Ultimate Tension Load
 200,000 lb Ultimate Compression Load

8.625" Pipe Pile Extensions, 0.250" Wall Thickness

| Catalog Number | Shaft Length (ft) | Weight (lbs) |
|----------------|-------------------|--------------|
| F86ME60 | 5 | 149 |
| F86ME84 | 7 | 200 |
| F86ME120 | 10 | 260 |

40,000 ft-lb Ultimate Installing Torque
 175,000 lb Ultimate Tension Load
 300,000 lb Ultimate Compression Load

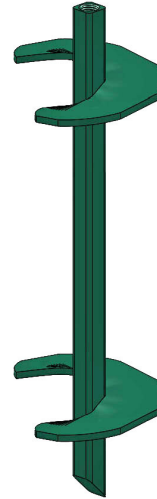
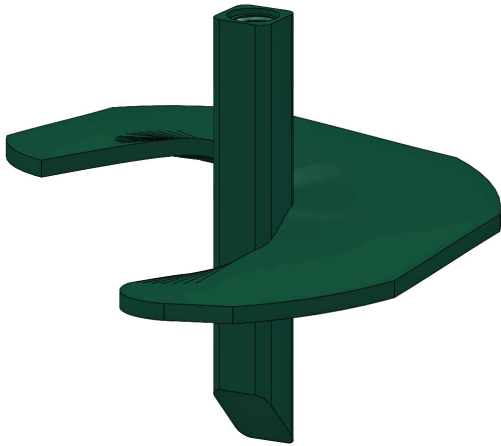
F86 New Construction Brackets



| Catalog Number | Dimensions LxWxH (in) | Weight (lbs) |
|----------------|-----------------------|--------------|
| NCB121204R86 | 12x12x0.5 | 52 |

Utility Anchors — Distribution Anchors

Power Hub Anchors



1-3/8 Inch Square Power Hub Anchors
6,000 ft-lb Ultimate Installing Torque

| Catalog Number | Helix Diameter (in) | Tapped for Rod Size (in) | Weight (lbs) |
|----------------|---------------------|--------------------------|--------------|
| D826 | 8 | 5/8 | 9 |
| D846 | 8 | 3/4 or 1 | 9 |
| D1026 | 10 | 5/8 | 12 |
| D1046 | 10 | 3/4 or 1 | 12 |
| D1126 | 12 | 5/8 | 16 |
| D1146 | 12 | 3/4 or 1 | 16 |
| D1346 | 14 | | 20 |
| D84-2-6 | 8, 8 | | 25 |
| D104-2-6 | 10, 10 | | 30 |

1-1/2 Inch Square Power Hub Anchors
6,000 ft-lb Ultimate Installing Torque

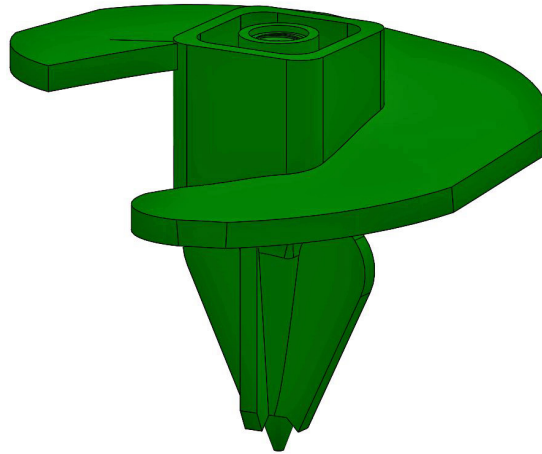
| Catalog Number | Helix Diameter (in) | Tapped for Rod Size (in) | Weight (lbs) |
|----------------|---------------------|--------------------------|--------------|
| D182 | 8 | 5/8 | 10 |
| D184 | 8 | 3/4 or 1 | 10 |
| D1102 | 10 | 5/8 | 14 |
| D1104 | 10 | 3/4 or 1 | 13 |
| D1114 | 12 | | 16 |
| D1134 | 14 | | 21 |
| D284 | 8, 8 | | 27 |
| D2104 | 10, 10 | | 32 |

1-1/2 Inch Square Power Hub Anchors
7,000 ft-lb Ultimate Installing Torque

| Catalog Number | Helix Diameter (in) | Tapped for Rod Size (in) | Weight (lbs) |
|----------------|---------------------|--------------------------|--------------|
| D184-7 | 8 | 3/4 or 1 | 10 |
| D1104-7 | 10 | | 15 |
| D1114-7 | 12 | | 17 |
| D244-7 | 4, 4 | | 20 |
| D284-7 | 8, 8 | | 27 |
| D2104-7 | 10, 10 | | 33 |



Turbo Drive Socket Power Hub Anchors



Standard 3/8 Inch Thick Helix

2-1/4 Inch Turbo Drive

10,000 ft-lb Ultimate Installing Torque

| Catalog Number | Helix Diameter (in) | Tapped for Rod Size (in) | Weight (lbs) |
|----------------|---------------------|--------------------------|--------------|
| TD225-82 | 8 | 5/8 | 11 |
| TD225-84 | | 3/4 or 1 | 11 |
| TD225-102 | 10 | 5/8 | 12 |
| TD225-104 | | 3/4 or 1 | 14 |
| TD225-112 | 12 | 5/8 | 17 |
| TD225-114 | | 3/4 or 1 | 17 |
| TD225-134 | 14 | | 21 |

2-1/2 Inch Turbo Drive

15,000 ft-lb Ultimate Installing Torque

| Catalog Number | Helix Diameter (in) | Tapped for Rod Size (in) | Weight (lbs) |
|----------------|---------------------|--------------------------|--------------|
| TD250-84 | 8 | 3/4 or 1 | 12 |
| TD250-104 | 10 | | 15 |
| TD250-114 | 12 | | 19 |
| TD250-134 | 14 | | 23 |

Heavy Duty 1/2 Inch Thick Helix

2-1/4 Inch Turbo Drive

10,000 ft-lb Ultimate Installing Torque

| Catalog Number | Helix Diameter (in) | Tapped for Rod Size (in) | Weight (lbs) |
|----------------|---------------------|--------------------------|--------------|
| TDH225-82 | 8 | 5/8 | 11 |
| TDH225-84 | | 3/4 or 1 | 11 |
| TDH225-102 | 10 | 5/8 | 14 |
| TDH225-104 | | 3/4 or 1 | 14 |
| TDH225-112 | 12 | 5/8 | 21 |
| TDH225-114 | | 3/4 or 1 | 21 |
| TDH225-134 | 14 | | 25 |

2-1/2 Inch Turbo Drive

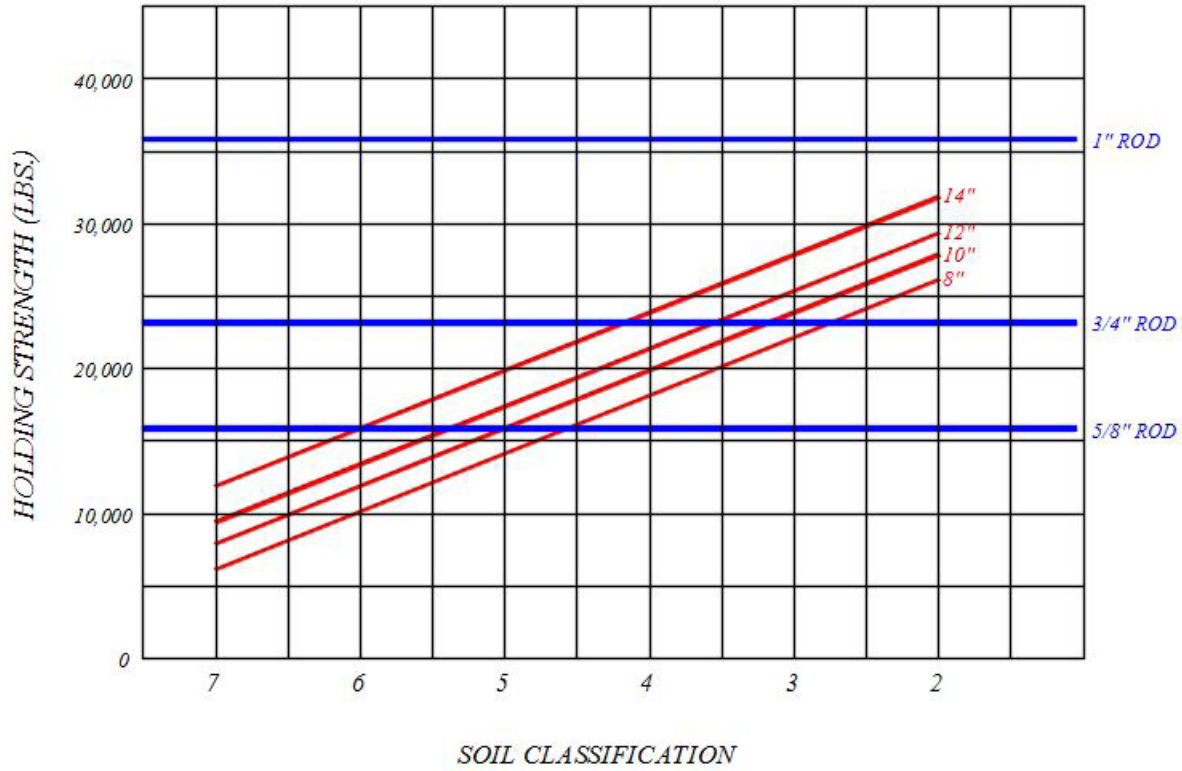
15,000 ft-lb Ultimate Installing Torque

| Catalog Number | Helix Diameter (in) | Tapped for Rod Size (in) | Weight (lbs) |
|----------------|---------------------|--------------------------|--------------|
| TDH250-84 | 8 | 3/4 or 1 | 14 |
| TDH250-104 | 10 | | 17 |
| TDH250-114 | 12 | | 22 |
| TDH250-134 | 14 | | 28 |

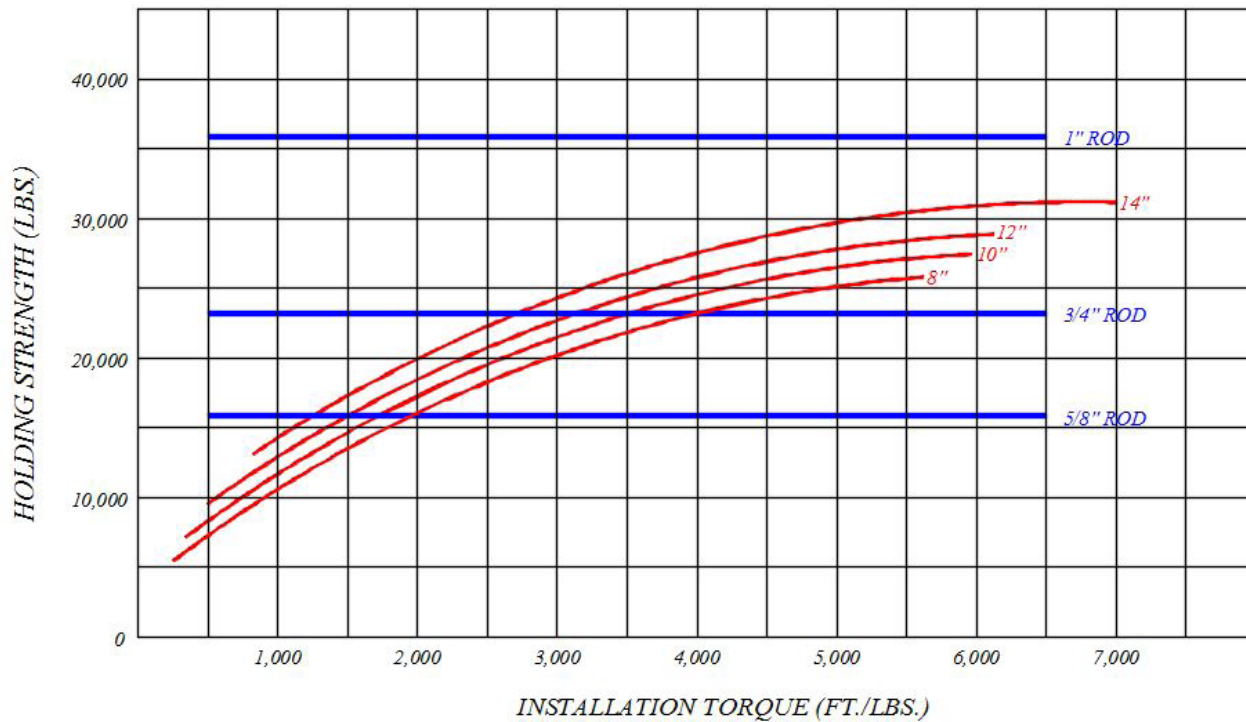
Utility Anchors — Distribution Anchors

Power Hub / Turbo Drive Anchor Estimated Load Resistance

HOLDING CAPACITY FOR SINGLE HELIX POWER HUB ANCHORS



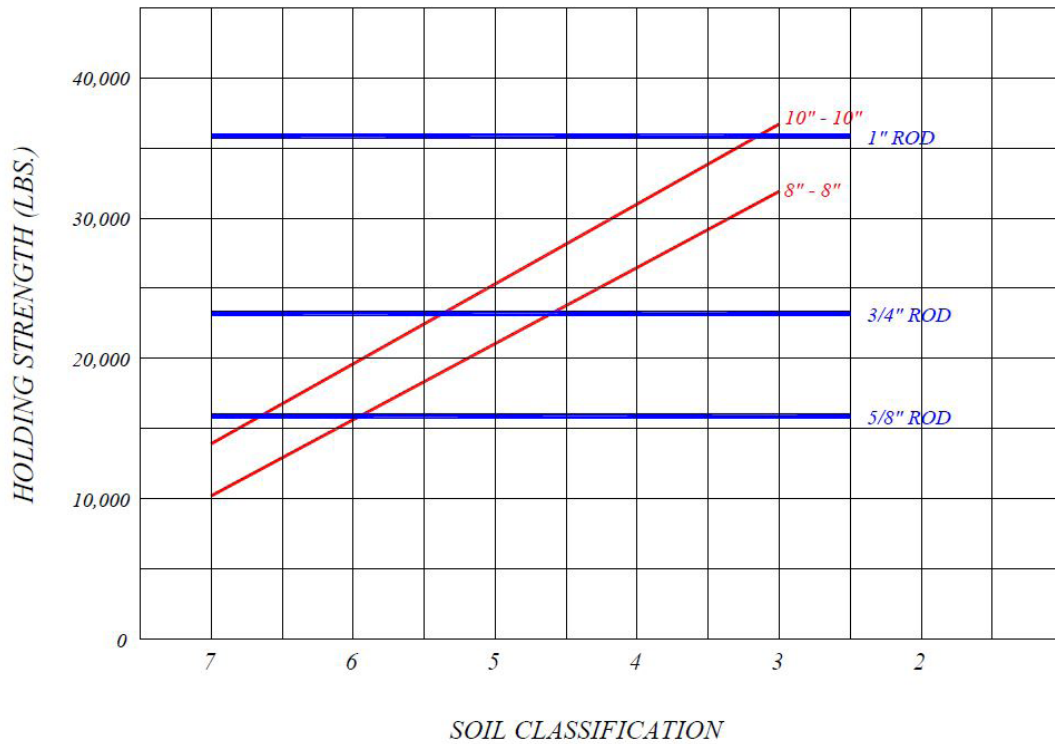
HOLDING CAPACITY FOR SINGLE HELIX POWER HUB ANCHORS



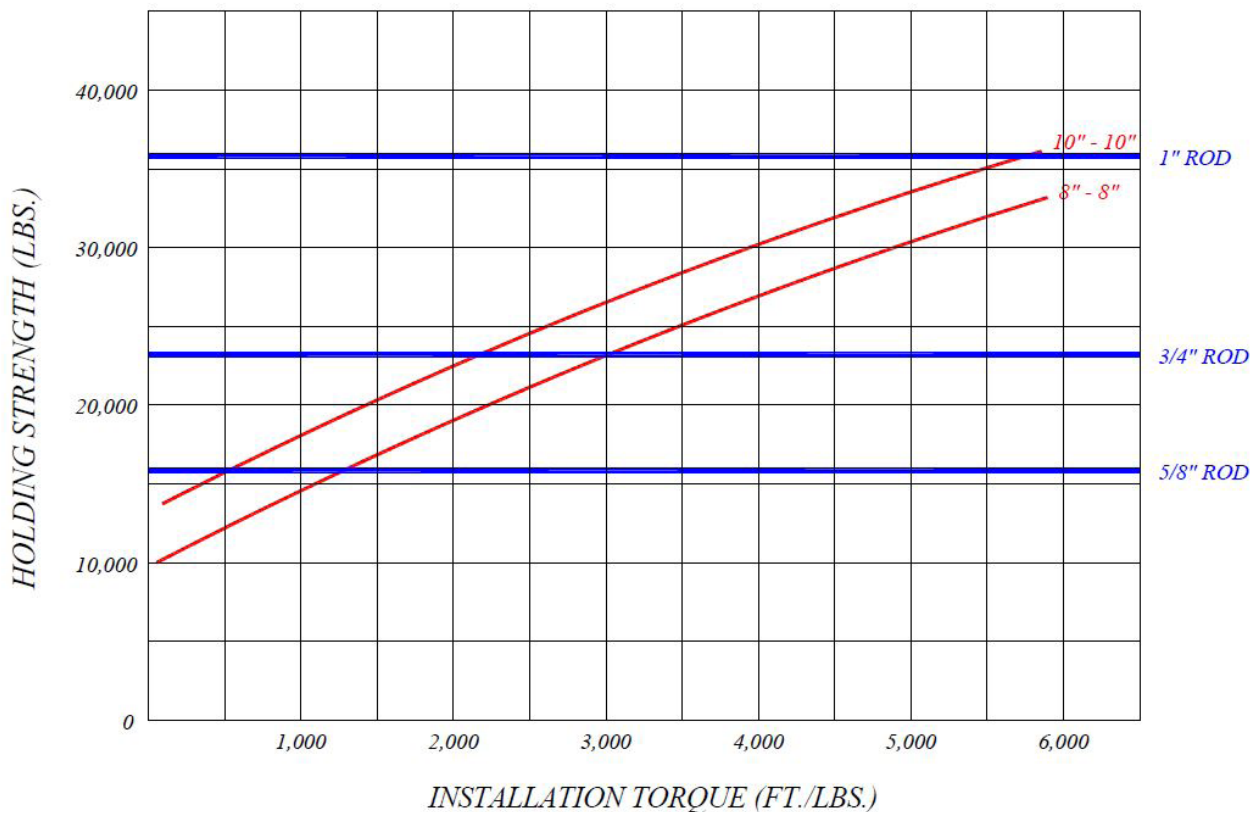


Power Hub / Turbo Drive Anchor Estimated Load Resistance (con't)

HOLDING CAPACITY FOR DOUBLE HELIX POWER HUB ANCHORS

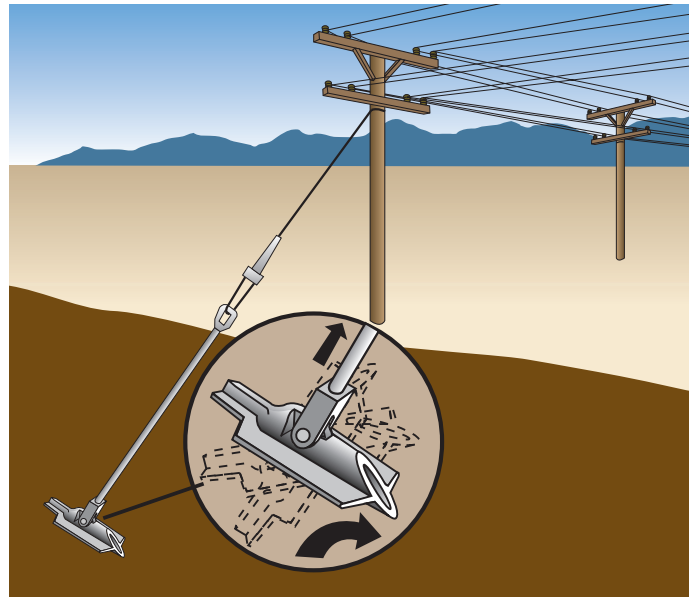


HOLDING CAPACITY FOR DOUBLE HELIX POWER HUB ANCHORS

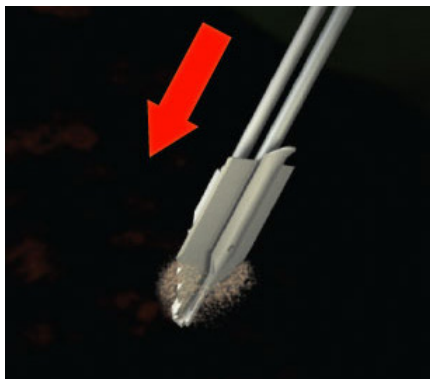


Utility Anchors — Distribution Anchors

Manta Ray™ Driven Anchors



How it works



Drive Anchor



Remove Drive Steel



Pull Rod

Manta Ray™ Driven Anchors

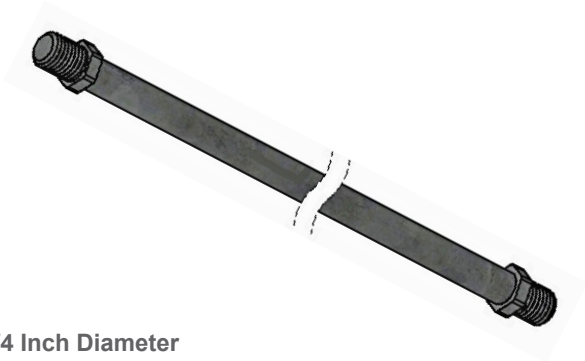
| Catalog Number | Anchor Model | Tapped for Rod Size (in) | Ultimate Load Rating (lbs force; rod dependant) | Weight (lbs) |
|----------------|--------------|--------------------------|---|--------------|
| 20210-UT-II | MR-3 | 5/8 | 16,000 | 7 |
| 20199-UT-II | MR-2 | 3/4 or 1 | 23,000 or 36,000 | 10 |
| 20036-UT-II | MR-1 | | | 13 |
| 20229-UT-II | MR-SR | | | 20 |

Manta Ray™ Driven Anchor Installation Tools

| Catalog Number | Description | Weight (lb) |
|----------------|--|-------------|
| 50087 | Hydraulic Hose with Couplers - 25' x 1/2" | 8 |
| 50243 | Standard Drive Steel Kit - 8' total length | 60 |
| 50127 | Load Locker | 151 |
| 50364 | 90 lb Hydraulic Breaker | 90 |
| 50382 | Portable Hydraulic Power Unit | 315 |



Power Hub and Manta Ray™ Anchor Rods



5/8 Inch Diameter 16,000 lbs Ultimate Tensile Strength

| Catalog Number | Length (ft) | Weight (lbs) |
|----------------|-------------|--------------|
| D6231/2 | 3.5 | 3 |
| D62 | 7 | 6 |

3/4 Inch Diameter 23,000 lbs Ultimate Tensile Strength

| Catalog Number | Length (ft) | Weight (lbs) |
|----------------|-------------|--------------|
| D7531/2 | 3.5 | 5 |
| D75 | 7 | 10 |

1 Inch Diameter 36,000 lbs Ultimate Tensile Strength

| Catalog Number | Length (ft) | Weight (lbs) |
|----------------|-------------|--------------|
| D10031/2 | 3.5 | 7 |
| D100 | 7 | 16 |

Power Hub Anchor Rod Eyenuts



5/8 Inch Rod Diameter Eyenuts 16,000 lbs Ultimate Tensile Strength

| Catalog Number | Eyenut Design | Weight (lbs) |
|----------------|---------------|--------------|
| D6510A | Thimble | 1 |
| D6560A | Twin | 1.4 |
| D6565 | Triple | 2.2 |

3/4 & 1 Inch Rod Diameter Eyenuts 36,000 lbs Ultimate Tensile Strength

| Catalog Number | Eyenut Design | Weight (lbs) |
|----------------|---------------|--------------|
| D6512 | Thimble | 2 |
| D6562A | Twin | 1.8 |
| D6567 | Triple | 2.1 |

Power Hub Anchor Rod Couplings

Coupling for 5/8 Inch Rod Diameter

| Catalog Number | Weight (lbs) |
|----------------|--------------|
| D352 | 0.5 |

Coupling for 3/4 & 1 Inch Rod Diameter

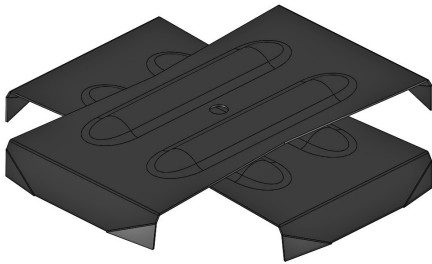
| Catalog Number | Weight (lbs) |
|----------------|--------------|
| D354 | 0.5 |

Utility Anchors — Distribution Anchors

Pole Key

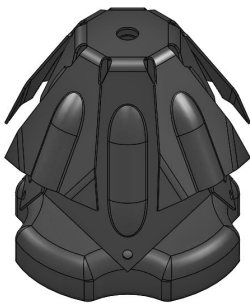
| Catalog Number | Width Expanded (in) | Blade Width (in) | Area of Anchor (sq in) | Weight (lbs) |
|----------------|---------------------|------------------|------------------------|--------------|
| J4817 | 27.25 | 7 | 276 | 23 |

Cross-Plate Anchors



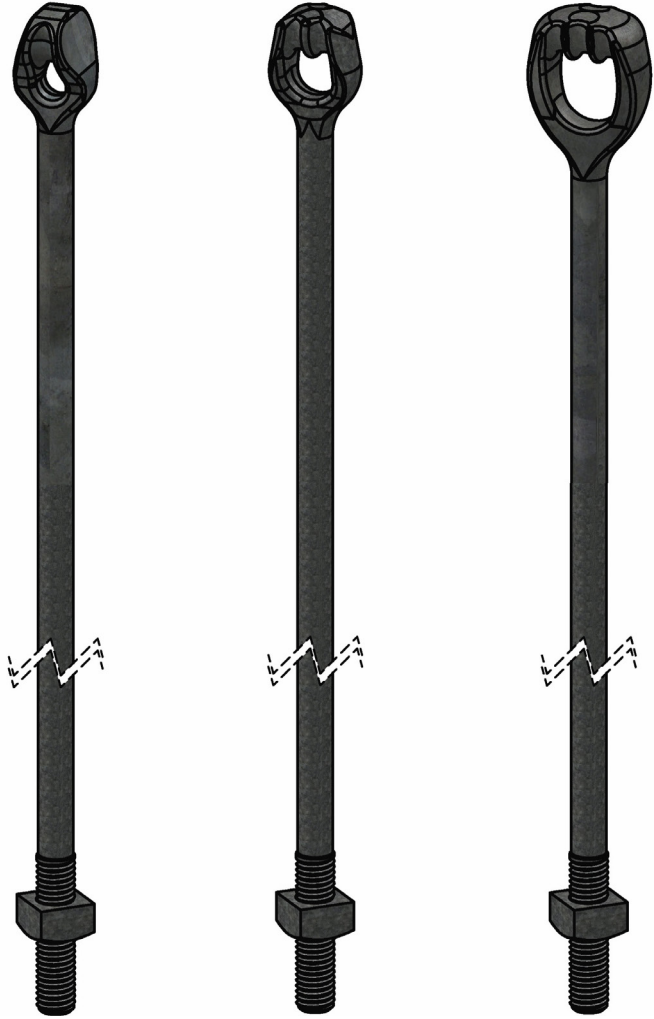
| Catalog Number | Installation Hole Diameter (in) | Area of Anchor (in ²) | Rod Diameter (in) | Weight (lbs) |
|----------------|---------------------------------|-----------------------------------|-------------------|--------------|
| J3516 | 16 | 150 | 5/8 or 3/4 | 10 |
| J3520 | 20 | 250 | | 1 |
| J3520-1 | | | | |
| J3524-3/4 | 24 | 400 | 5/8 or 3/4 | 31 |
| J3524 | | | 1 | 31 |
| J3524-1 | | | 1-1/4 | 31 |

Expanding (Bust) Anchors



| Catalog Number | Installation Hole Diameter (in) | Area of Anchor (in ²) | Rod Diameter (in) | Weight (lbs) |
|----------------|---------------------------------|-----------------------------------|-------------------|--------------|
| J0870 | 6 | 70 | 5/8 | 5 |
| J8115 | 8 | 115 | 5/8 or 3/4 | 7 |
| J8135 | | 135 | | 1 |
| J8135-1 | | | | |
| J8200-3/4 | 10 | 200 | 5/8 or 3/4 | 18 |
| J8200-1 | | | 1 | 19 |
| J0283-1 | 12 | 300 | 1-1/4 | 29 |
| J0283 | | | | 29 |

Rods for Cross-Plate Anchors and Expanding Anchors



Thimble Eye Rods

| Catalog Number | Ultimate Tensile Strength (lbs force) | Rod Diameter (in) | Rod Length (ft) | Weight (lb) |
|----------------|---------------------------------------|-------------------|-----------------|-------------|
| J7415 | 16,000 | 5/8 | 5 | 6 |
| J7416 | | | 6 | 7 |
| J7417 | | | 7 | 8 |
| J7418 | | | 8 | 9 |
| J7427 | 23,000 | 3/4 | 7 | 11 |
| J7428 | | | 8 | 12 |
| J7429 | | | 9 | 14 |
| J7530 | | | 10 | 15 |

Utility Anchors — Distribution Anchors

Twin Eye Rods

| Catalog Number | Ultimate Tensile Strength (lbs force) | Rod Diameter (in) | Rod Length (ft) | Weight (lb) |
|----------------|---------------------------------------|-------------------|-----------------|-------------|
| J7516 | 16,000 | 5/8 | 6 | 7 |
| J7517 | | | 7 | 8 |
| J7518 | | | 8 | 9 |
| J7527 | 23,000 | 3/4 | 7 | 10 |
| J7528 | | | 8 | 12 |
| J7529 | | | 9 | 14 |
| J7530 | | | 10 | 16 |
| J7538 | 36,000 | 1 | 8 | 18 |
| J7540 | | | 10 | 28 |

Triple Eye Rods

| Catalog Number | Ultimate Tensile Strength (lbs force) | Rod Diameter (in) | Rod Length (ft) | Weight (lb) |
|----------------|---------------------------------------|-------------------|-----------------|-------------|
| J7327 | 23,000 | 3/4 | 7 | 12 |
| J7328 | | | 8 | 13 |
| J7329 | | | 9 | 14 |
| J7338 | 36,000 | 1 | 8 | 19 |
| J7340 | | | 10 | 23 |
| J7350 | 58,000 | 1-1/4 | 10 | 43 |

Heavy Square Nuts

| Catalog Number | Corresponding Rod Diameter (in) | Weight per 100 (lb) |
|----------------|---------------------------------|---------------------|
| J8563-1 | 5/8 | 12 |
| J8564-1 | 3/4 | 21 |
| J8565-1 | 1 | 50 |
| J8566 | 1-1/4 | 100 |

No-Wrench Anchors



| Catalog Number | Helix Diameter (in) | Rod Diameter (in) | Rod Length (ft) | Weight (lbs) |
|----------------|---------------------|-------------------|-----------------|--------------|
| J6524WCA | 4 | 3/4 | 4.5 | 8 |
| J6526WCA | 6 | | | 12 |
| J6528WCA | 8 | 1 | 5.5 | 18 |
| J6530WCA | 10 | 1-1/4 | | 8 |
| J6550WCA | 10 | | 39 | |
| J6584WCA | 14 | | 57 | |
| J6585WCA | 15 | | 58 | |

NOTE: All No-Wrench Anchors have 3 Guy Attachments

Rock Anchors



| Catalog Number | Rod Dia. (in) | Rod Length (in) | Anchor Dia. Closed (in) | Anchor Dia. Open (in) | Installation Hole Diameter (in) | Weight (lbs) |
|----------------|---------------|-----------------|-------------------------|-----------------------|---------------------------------|--------------|
| J3436 | 3/4 | 15 | 1-3/4 | 2-3/8 | 1-7/8 | 5 |
| J3437 | | 30 | | | | 7 |
| J3438 | | 53 | | | | 10 |
| JR360 | | 60 | | | | 11 |
| JR372 | | 72 | | | | 12 |
| JR384 | | 84 | | | | 13 |
| JR396 | | 96 | | | | 15 |
| JR130L | 1 | 30 | 2-1/4 | 3-1/8 | 2-3/8 | 12 |
| JR153L | | 53 | | | | 17 |
| JR172L | | 72 | | | | 18 |
| JR196L | | 96 | | | | 25 |

NOTE: All Rock Anchors have 3 Guy Attachments

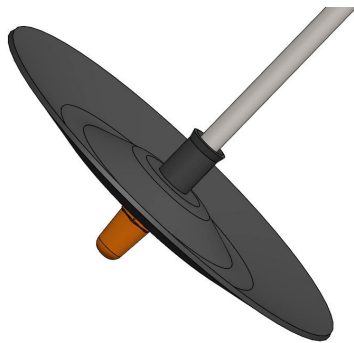
Plate, Expanding (Bust), No-Wrench, and Rock Anchor Extensions



| Catalog Number | Number of Guy Attachments | Rod Diameter (in) | Rod Length (ft) | Weight (lbs) |
|----------------|---------------------------|-------------------|-----------------|--------------|
| D1099-0012 | 3 | 3/4 | 2 | 6 |
| D1099-0019 | 2 | 3/4 | 2 | 8 |
| D1099-0006 | 3 | 1 | 1.5 | 7 |
| D402-36 | | 1-1/4 | 3 | 18 |



Disk Anchors



Corrosion Resistant Disks

| Catalog Number | Disk Diameter (in) | Disk Thickness (in) | Rod Diameter (in) | Weight (lbs) |
|----------------|--------------------|---------------------|-------------------|--------------|
| DA1675 | 16 | 0.187 | 3/4 | 12 |
| DA161 | | | 1 | 12 |
| DA201187 | 20 | 18 | | |
| DA201250 | | 0.25 | | 24 |
| DA241187 | 24 | 0.187 | | 25 |
| DA241250 | | 0.25 | 33 | |



Corrosion Protected Rods

| Catalog Number | Length (ft) | Number of Guy Attachments | Diameter (in) | Weight (lbs) |
|----------------|-------------|---------------------------|---------------|--------------|
| J7426CPR | 6 | 1 | 3/4 | 9 |
| J7427CPR | 7 | | | 10 |
| J7428CPR | 8 | | | 12 |
| J7429CPR | 9 | | | 13 |
| J7430CPR | 10 | | | 15 |
| J7526CPR | 6 | 2 | 3/4 | 10 |
| J7527CPR | 7 | | | 11 |
| J7528CPR | 8 | | | 12 |
| J7529CPR | 9 | | | 13 |
| J7530CPR | 10 | | | 15 |
| J7536CPR | 6 | | 1 | 11 |
| J7537CPR | 7 | | | 13 |
| J7538CPR | 8 | | | 15 |
| J7539CPR | 9 | | | 16 |
| J7540CPR | 10 | | | 18 |
| J7326CPR | 6 | 3 | 3/4 | 10 |
| J7327CPR | 7 | | | 11 |
| J7328CPR | 8 | | | 12 |
| J7329CPR | 9 | | | 13 |
| J7330CPR | 10 | | 15 | |
| J7336CPR | 6 | | 1 | 11 |
| J7337CPR | 7 | | | 13 |
| J7338CPR | 8 | | | 15 |
| J7339CPR | 9 | | | 16 |
| J7340CPR | 10 | | | 18 |

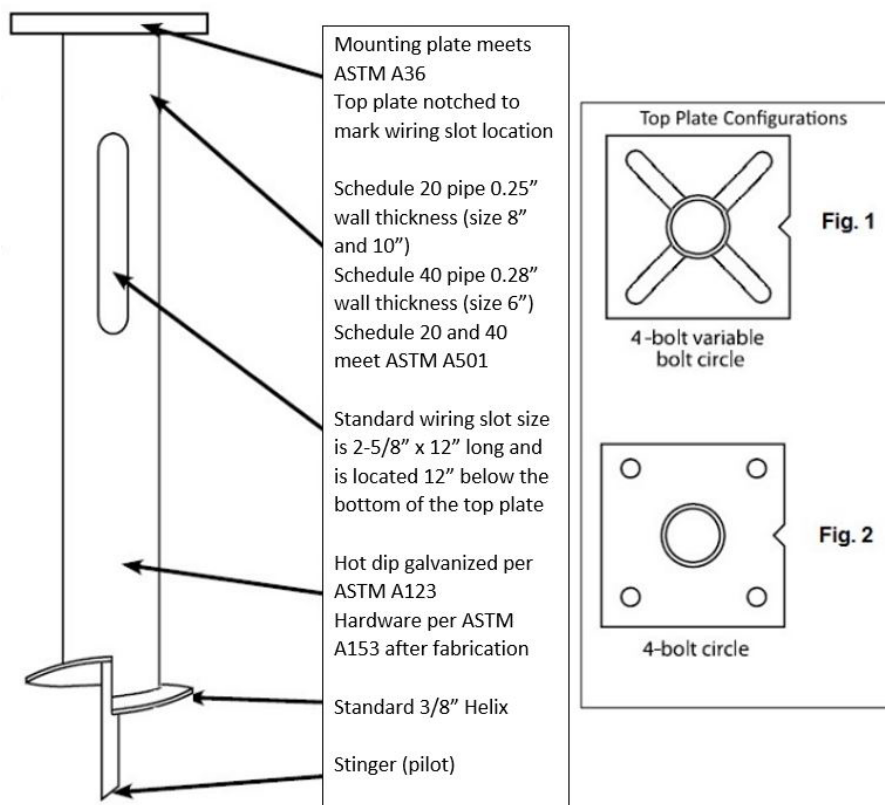
NOTE: Ultimate Tension capacity is 23,000 lbs for 3/4" diameter rods and 36,000 lbs for 1" diameter rods

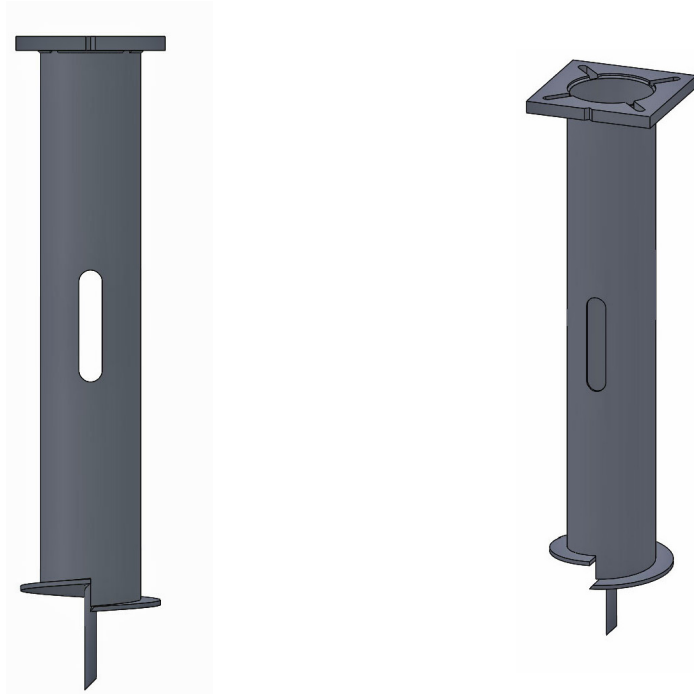
Utility Anchors — Street Light Foundations



Features

- High strength pipe
- Rugged helix for difficult soils
- Lead point “stinger” to facilitate initial penetration & “setting the plumb”
- Structural steel top plate with slots for variable bolt hole circles to meet pole base dimensions
- Supplied with high strength bolts to secure the pole
- Available in 6”, 8”, 10” diameters
- Lengths range from 5’ – 10’
- Wiring slots on either side of the pile
- Torque ratings up to 20,000 ft-lbs
- Hot dip galvanized for corrosion protection
- Installs in minutes
- Reduces the total installation cost
- Poles can be installed on the Street Light Foundation immediately
- No building forms, setting rebar and anchor bolts
- Installs in all weather conditions
- Minimal site cleanup of disturbed soil





6 Inch Diameter Pipe with a 12" Square Top Plate

| Catalog Number | Length (ft) | Bolt Circle Range (in) | Weight (lbs) |
|-----------------|-------------|------------------------|--------------|
| D06060BBB08148V | 5 | 8-14 | 143 |
| D06072BBB08148V | 6 | | 169 |
| D06084BBB08148V | 7 | | 178 |

8 Inch Diameter Pipe with a 16" Square Top Plate

| Catalog Number | Length (ft) | Bolt Circle Range (in) | Weight (lbs) |
|-----------------|-------------|------------------------|--------------|
| D08060BBB11178V | 5 | 11-17 | 181 |
| D08072BBB11178V | 6 | | 215 |
| D08084BBB11178V | 7 | | 238 |

10 Inch Diameter Pipe with a 16" Square Top Plate

| Catalog Number | Length (ft) | Bolt Circle Range (in) | Weight (lbs) |
|-----------------|-------------|------------------------|--------------|
| D10060BBB11178V | 5 | 11-17 | 217 |
| D10072BBB11178V | 6 | | 245 |
| D10084BBB11178V | 7 | | 273 |
| D10096BBB11178V | 8 | | 301 |
| D10120BBB11178V | 10 | | 357 |

Standard cableway slot size is 12" x 2-5/8" and located 12" below the top plate

Standard top plate configuration is shown in Figure 1

Standard hardware consists of four (4) of the following : 1" x 4" carriage bolts, flat washer, and hex nut

Contact your MPS Sales Representative near you for additional Street Light Foundation sizes and catalog numbers.



Street Light Foundation Selection

Soil Classification Guide

| Class | Common Soil Type Description | Geological Soil Classification | Typical Blow Count "N" per ASTM-D1586 |
|-------|---|--|---------------------------------------|
| 0 | Sound hard rock, unweathered | Granite, Basalt, Massive Limestone | N.A. ROD = 50-1/2 |
| 1 | Very dense and/or cementd sands; coarse gravel and cobble stones | Caliche, (Nitrate-bearing gravel/rock) | 60 - 100+ |
| 2 | Dense fine sand; very hard silts and clays (may be pre-loaded) | Basal till; boulder clay; caliche; weathered laminated rock | 45 - 60 |
| 3 | Dense clays, sands and gravel; hard silts and clays | Glacial till; weathered shales, schist, gneiss and siltstone | 35 - 50 |
| 4 | Medium dense sandy gravel; very stiff to hard silts and clays | Glacial till; hardpan; marls | 24 - 40 |
| 5 | Medium dense coarse sand and sandy gravels; stiff to very stiff silts and clays | Saprolites, residual soils | 14 - 25 |
| 6 | Loose to medium dense fine to coarse sand; firm to stiff clays and silts | Dense hydraulic fill; compacted fill; residual soils | 7 - 14 |
| **7 | Loose fine sand; Alluvium; loess; soft-firm clays; varied clays; fill | Flood plain soils; lake clays; adobe; gumbo, fill | 4 - 8 |
| **8 | Peat, organic silts; inundated silts, fly ash | Miscellaneous fill, swamp marsh | 0 - 5 |

Class 1 soils are difficult to probe consistently and the ASTM blow count may be of questionable value

** It is adviseable to install anchors deep enough, by the use of extensions, to penetrate a Class 5 or 6, underlying the Class 7 or 8 soils.

Pole Load Determination Form

| | | | |
|--------------------------------|----------|--------------------------------|-------------|
| Project Location..... | _____ | Arm Shape (see list below).... | _____ |
| Pole Mounting Height..... | _____ ft | Arm Length..... | _____ ft |
| Pole Shape (see list below)... | _____ | Arm Diameter: | |
| Pole Diameter: | | Top..... | _____ in |
| Top..... | _____ in | Bottom..... | _____ in |
| Bottom..... | _____ in | Number of Arms..... | _____ |
| Pole Base Bolt Circle..... | _____ in | Number of Luminaires..... | _____ |
| Foundation Bolt Circle..... | _____ in | Luminaire EPA..... | _____ sq ft |
| Bolt Diameter..... | _____ in | Wind Load Requirement..... | _____ MPH |
| Soil: | | Wiring Slot: | |
| Classification..... | _____ | Length..... | _____ in |
| Blow Count..... | _____ | Width..... | _____ in |
| | | Distance From Top Plate.. | _____ in |

Note: standard bolt length is 4"

| Pole and Arm Shape Options: | | |
|-----------------------------|--------------------------|---------------------|
| Cylinder | Hexadecagonal (16 sided) | Octagonal (8 sided) |
| Flat | Dodecagonal (12 sided) | Square (4 sided) |
| Diamond | | |



Kelly Bar Adapters

| Catalog Number | Bolt Circle (in) | Drive Shaft Hex Size (in) | Torque Rating (ft-lb) |
|----------------|------------------|---------------------------|-----------------------|
| KB200-525 | 5-1/4 | 2 | 10,000 |
| KB250-525 | | 2-1/2 | |
| KB263-525 | | 2-5/8 | |
| KB200-7625 | 7-5/8 | 2 | 20,000 |
| KB250-7625 | | 2-1/2 | |
| KB263-7625 | | 2-5/8 | |
| KB300-7625 | | 3 | |

Drive Tools for 1-1/2", 1-3/4", and 2" Round Corner Square

| Catalog Number | Anchor Size (in) | Bolt Circle (in) | Torque Rating (ft-lb) |
|----------------|------------------|------------------|-----------------------|
| IT28-525 | 1-1/2 | 5-1/4 | 10,000 |
| IT28-7625 | | 7-5/8 | 20,000 |
| IT35-7625 | 1-3/4 | | |
| IT45-7625 | 2 | | |

Locking Dog Assemblies

| Catalog Number | Bolt Circle (in) | Torque Rating (ft-lb) |
|----------------|------------------|-----------------------|
| D4806-0053 | 5-1/4 | 10,000 |
| D4806-0024 | 7-5/8 | 15,000 |

F86 Pipe Pile

| Catalog Number | Kelly Bar Hex Size (in) | Torque Rating (ft-lb) |
|----------------|-------------------------|-----------------------|
| R86TL300 | 3 | 40,000 |

Torque Tubes for Locking Dog Assemblies

| Catalog Number | Description | Torque Rating (ft-lb) |
|----------------|--|-----------------------|
| D9101-0003 | 7' Long, for 1-3/8" Power Hub and 2-1/4" Turbo Drive Anchors | 10,000 |
| D30187 | 7' Long, for 1-1/2" Power Hub Anchors | |
| D30187-1 | 10" Long, for 1-1/2" Round Corner Square Anchors | |

No-Wrench Anchor Drive Tool

| Catalog Number | Description | Bolt Circle (in) | Torque Rating (ft-lb) |
|----------------|--|------------------|-----------------------|
| D4806-0052 | Installation Tool for No-Wrench Anchor Sizes (3/4", 1", and 1-1/4" Diameter) | 5-1/4 | 2,500 |

Street Light Foundation Pile Tools

| Catalog Number | Description | Torque Rating (ft-lb) |
|----------------|---|-----------------------|
| D4806-0015 | Installation Tool for 6", 8", and 10" Foundations; 2-1/2" Hex Kelly Bar Adapter | 20,000 |
| D4806-0016 | Installation Tool for 6", 8", and 10" Foundations; 2-5/8" Hex Kelly Bar Adapter | |

Other Quality MacLean Products

Aluminum Mounts
Anchoring Systems
Conductor Hardware
Connectors
Cutouts
Enclosures and Pads
Fiberglass Products
Formed Wire
Grounding and Tools
Insulator Systems
Pole Line Hardware
Surge Arresters
Telecommunications Hardware

MacLean Power Systems
481 Munn Road, Suite 300
Fort Mill, SC 29715 USA
fax 803.396.8601
macleanpower.com

Customer Service 1.855.MPS.SHIP
info@macleanpower.com