



Quadrant Deadend Clamps

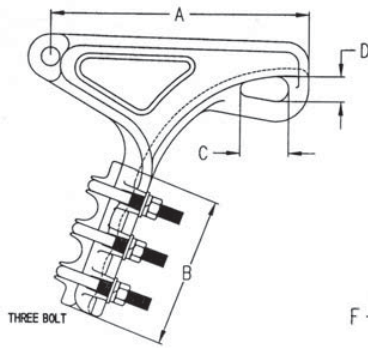
Aluminum Quadrant Deadend Clamps

Features

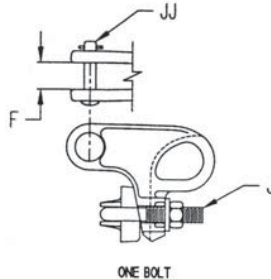
- Recommended torque on U-Bolts: 3/8" = 20-25 ft/lbs; 1/2" = 40-45 ft/lbs; 3/4" = 65-70 ft/lbs

Material

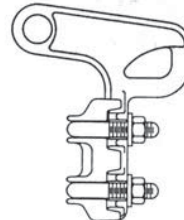
Body and Keeper: Aluminum
 Fittings: Ductile iron hot dip galvanized



DA Series



ONE BOLT



TWO BOLT

Catalog Number	Conductor Range			U-Bolts		Dimensions						Option Fitting Socket (-S)	Ultimate Strength	Weight /100 (lbs)	
	Inches	ACSR	Aluminum	No	Size	A	B	C	D	F	J				JJ
DA-10-N	0.160 - 0.522	6 - 3/0	6 - 4/0	1	1/2	3.63	1.88	1.19	15/16	11/16	1/2	5/8	SI-625	8000	106
DA-15-N	0.160 - 0.522	6 - 3/0	6 - 4.0	2	1/2	4.25	3.25	1.38	1 1/8	11/16	3/8	5/8	SI-625	8000	122
DA-15H-N	0.230 - 0.522	4 - 3/0	4 - 4/0	2	1/2	5.00	3.94	1.31	1	11/16	1/2	5/8	SI-625	10000	202
DA-20-N	0.25 - 0.62	4 - 266.8 18/1	2 - 266.8	2	1/2	5.88	3.94	1.50	1 1/8	15/16	1/2	5/8	SI-825	12000	231
DA-22-N	0.250 - 0.743	4 - 397.5 18/1	1/0 - 400	2	1/2	5.75	3.94	1.75	1 1/8	15/16	1/2	5/8	SI-875	15000	250
DA-30-N	0.44 - 0.88	2/0 - 556.5 18/1	3/0 - 556.5	2	1/2	5.13	4.00	1.75	1 1/8	15/16	1/2	5/8	SI-875	15000	258
DA-40-N	0.460 - 1.065	3/0 - 954 54/7	4/0 - 795	3	1/2	9.88	6.00	2.00	1 1/4	1 1/16	5/8	5/8	SI-1125	20000	480
DA-26-N	0.75 - 1.34	397.5 26/7 - 1113 54/19	447 - 1351.5	3	5/8	13.00	7.5	2.44	1 1/4	1 3/8	5/8	5/8	SI-1125	25000	1025

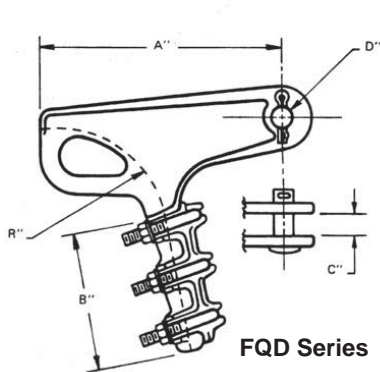
Notes:

- Suffix "N" indicates no fitting
- Add suffix "S" for socket fitting
- Add suffix "C" for clevis fitting

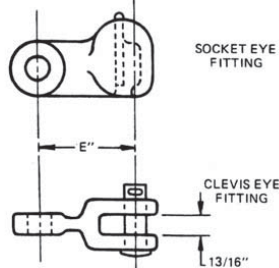
Iron Quadrant Deadend Clamps

Material

Body and Keeper: Ductile iron hot dip galvanized
 Cotter Pin: Stainless steel
 Fittings: Ductile iron hot dip galvanized
 Hardware: Steel hot dip galvanized ASTM A-153



FQD Series



SOCKET EYE FITTING

CLEVIS EYE FITTING

13/16"

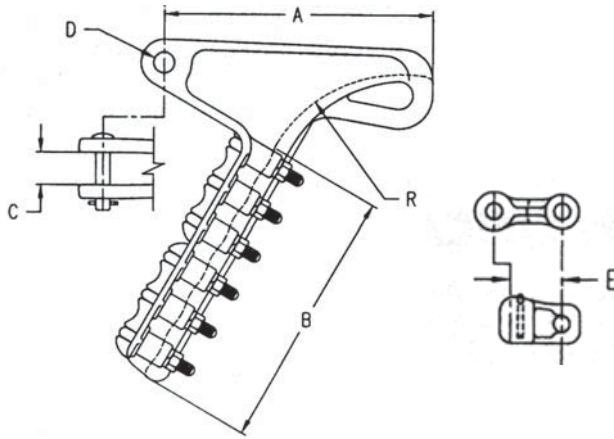
Catalog Number	Conductor Range			U-Bolts		Dimensions				Option Fitting		Ultimate Strength	Weight /100 (lbs)
	Inches	ACSR	AL or Cu	No	Size	A	B	C	D	Socket (-S)	Clevis (-C)		
FQD-52-1	0.160 - 0.550	#6 - 3/0	#6 - 4/0	1	1/2	4.00	1.75	0.69	5/8	SI-625	SCE-55-625	15000	200
FQD-58-2	0.180 - 0.580	#6 - 4/0	#6 - 4/0	2	1/2	5.00	3.00	0.88	5/8	SI-625	SCE-55-625	20000	350
FQD-58-3	0.180 - 0.580	#6 - 4/0	#6 - 4/0	3	1/2	5.00	4.63	0.88	5/8	SI-625	SCE-55-625	20000	470
FQD-68-3	0.200 - 0.680	#4 - 300	#4 - 366.4	3	1/2	7.50	4.88	0.81	5/8	SI-750	SCE-55-875	25000	900
FQD-84-4	0.300 - 0.840	#2 - 477 18/1	#1 - 477	4	1/2	9.81	9.50	1.00	5/8	SI-875	SCE-55-875	30000	900

Notes:

- For static suppressor conical spring in ONE trunnion hole, add suffix "-SL-1"
- For static suppressor conical spring in BOTH trunnion holes, add suffix "-SL-2"
- Recommended torque on U-Bolts: 1/2" - 40-45 ft/lbs



Quadrant Transmission Deadend Clamps



Aluminum Quadrant Transmission Deadend Clamps

Material

Body and Keeper:	Aluminum
Cotter Pin:	Stainless steel
Fittings:	Ductile iron hot dip galvanized
Hardware:	Steel hot dip galvanized ASTM A-153

Catalog Number	Conductor Range		U-Bolts		Dimensions						Option Fitting		Ultimate Strength	Weight /100 (lbs)
	Inches	ACSR	No	Size	A	B	C	D	E	R	Socket (-S)	Clevis (-C)		
ADE-21-N	0.200 - 0.587	4 - 4/0	3	1/2	9.56	6.06	1.00	5/8	2 3/16	3 3/4	SI-875	SCE-55-875	15000	400
ADE-22-N	0.300 - 0.721	2 - 336.4 26/7	4	1/2	10.00	9.50	1.00	5/8	2 3/16	4 3/4	SI-875	SCE-55-875	20000	599
ADE-23-N	0.475 - 0.886	3/0 - 556.6 18/1	4	1/2	12.94	10.75	1.00	5/8	2 3/16	5 1/2	SI-875	SCE-55-875	23000	916
ADE-24-N	0.580 - 1.020	266.8 - 666.6	5	1/2	12.25	14.25	1.25	5/8	2 3/16	6	SI-875	SCE-55-875	27000	1150
ADE-2526-N	0.710 - 1.318	336.4 26/7 - 1192.5 45/7	5	5/8	14.31	13.69	1.50	3/4	2 3/16	7 1/2	SI-1375-6	SCE-56-1375	30000	1473
ADE-26-N	0.750 - 1.382	397.5 24/7 - 1272 54/19	6	5/8	14.63	14.25	1.75	3/4	3	8	SE-1625-6	SCE-56-1625	35000	1645
ADE-27-CE-N	1.30 - 1.83	1192.5 45/7 - 2167 72/7	5	5/8	16.75	14.50	2.00	3/4	2 11/16	13	SE-1750-6	SCE-56-1750	45000	2150
ADE-28-N	1.38 - 2.00	1272 54/19 - 2167 72/7	6	5/8	18.94	17.00	2.38	7/8	3	14	SE-2000-7	SCE-57-2000	60000	2400
ADE-120-N	0.50 - 1.20	3/0 - 954	5	5/8	13.00	9.00	1.38	3/4	2 3/8	7	SE-1000-6	SCE-56-1125	30000	789
ADE-140-N	0.71 - 1.40	4/0 - 1351.5 - 45/7	5	5/8	14.50	10.50	1.44	3/4	2 3/8	8	SE-1250-6	SCI-56-1375	35000	975
ADE-165-N	1.00 - 1.65	1780 - 84/19	5	5/8	15.50	12.00	1.69	3/4	3	9 1/2	SE-1625-6	SCE-56-1625	35000	1370
AQDH-94-N	0.46 - 0.94	636 - 18/1	4	1/2	10.50	6.50	1.06	5/8	2 3/16	5	SI-875	SCE-55-875	25000	529

Notes:

- 1) Suffix "N" indicates no fitting
- 2) Add suffix "S" for socket fitting - for use on Class 52-3 or 52-5 insulators
- 3) Add suffix "C" for clevis fitting - for use on Class 52-1, 52-2, 52-4, or 52-6 insulators
- 4) Suffix "S8" indicates socket fitting - for use on Class 52-8 insulators
- 5) 90° clevis eye also available
- 6) Recommended torque on U-Bolts: 1/2" hardware = 40-45 ft/lbs, 5/8" hardware = 65-70 ft/lbs