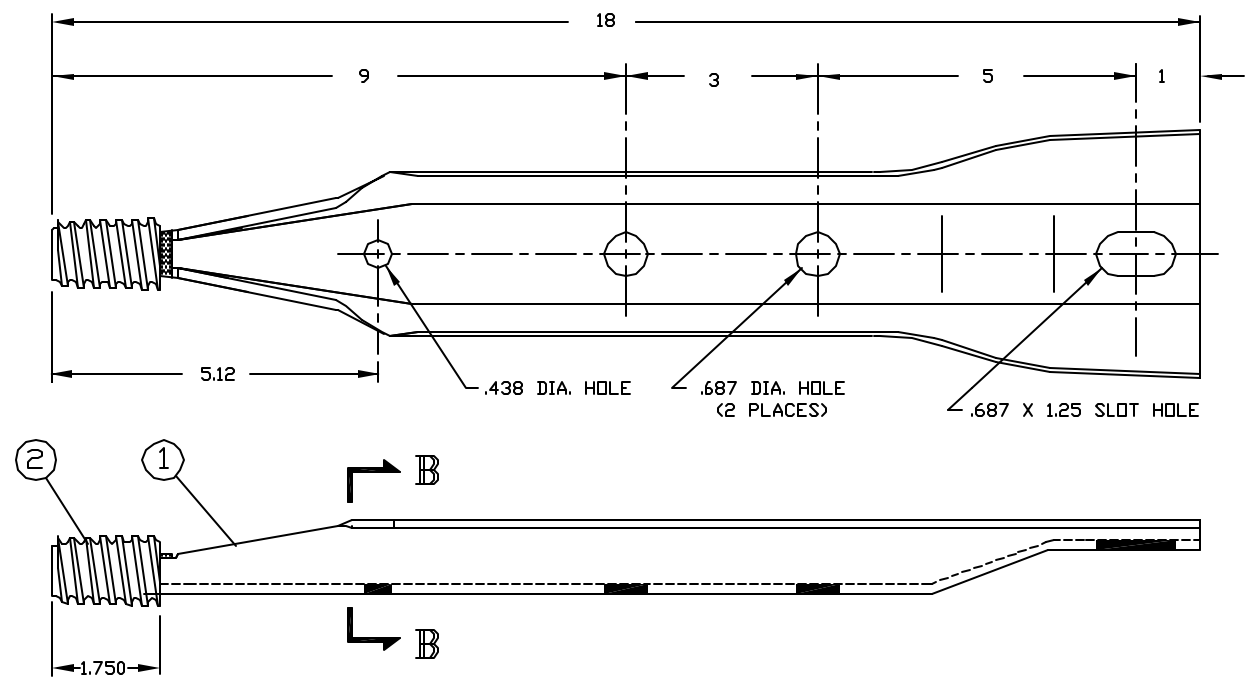


SECTION B - B



ITEM	PART NO.	DWG. NO.	DESCRIPTION
1	26808C.3	26808C	POLE TOP PIN STEEL BODY
2	26654	26654	STANDARD 1" THREAD

- NOTES:**
1. ALL DIMENSIONS ARE REFERENCE AND IN INCHES
 2. HOT DIP GALVANIZED (ASTM A-153)

CUSTOMER DRAWING

CATALOG NO. J2008Z

JOSLYN
MANUFACTURING CO.

POLE TOP PIN
WITH NYLON ALLOY
THREAD

NO.	REVISION	DATE	CK.

UNSPECIFIED	DIMENSIONAL	TOLERANCES
FRACTIONAL ±	DECIMAL ±	ANGULAR ±

SUPERSEDES:
THIS DRAWING IS THE PROPERTY OF JOSLYN MANUFACTURING CO. AND EMBODIES A CONFIDENTIAL PROPRIETARY DESIGN IN WHICH JOSLYN RETAINS ALL PATENTS AND PROPRIETARY RIGHTS, INCLUDING EXCLUSIVE RIGHT OF USE, MANUFACTURE AND SALE. BY ACCEPTING THIS DRAWING, THE RECIPIENT AGREES NOT TO DISCLOSE, REPRODUCE OR USE ANY INFORMATION CONTAINED HEREIN WITHOUT THE PRIOR WRITTEN CONSENT OF JOSLYN.

DATE	7-20-05	DWG. NO.	1275-2Z-C
DRAWN	<i>MFA</i>	NO.	
CHECKED		SCALE:	NONE
		SHEET	1 OF 1