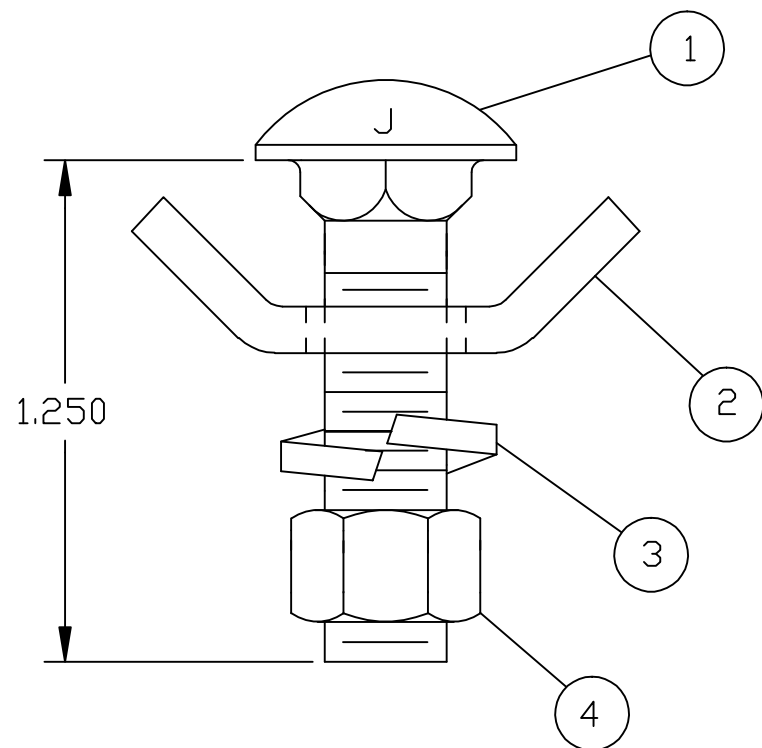
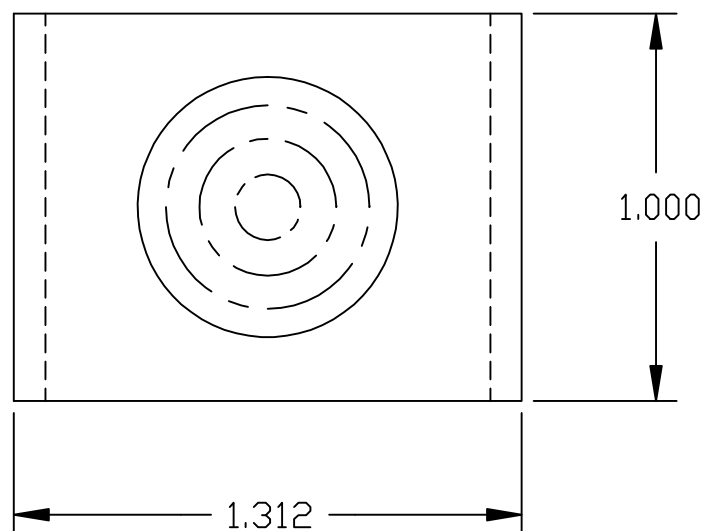


REVISIONS				
NO.	DATE	DESCRIPTION	BY	CKD




ITEM	PART NO.	DWG NO.	QTY	DESCRIPTION
1	26316	26316	1	.120 X 1.000 CLAMP SECTION
2	22442.2	22442	1	.375 X 1.250 CARRIAGE BOLT
3	J134	23880	1	.375 SPRING LOCKWASHER
4	23856	23856	1	.375 REGULAR HEX NUT

NOTES:

- 1) ALL DIMENSIONS ARE REFERENCE AND ARE IN INCHES
- 2) ALL ITEMS HOT DIP GALVANIZED (ASTM A-153)

ENG. REF.

This information is confidential and is the property of Maclean Power Systems. It may not be made public or reproduced except that the Customer may make copies for use solely in installation, maintenance, and operation of products supplied by Maclean Power Systems.

 Maclean Power Systems BIRMINGHAM , ALABAMA			
GROUND LUG ASSEMBLY CAT. NO. J771018			
DATE: 1-16-96	SCALE:	NO. 26286-C	R / 0
DWN. JB	CKD. BY:	APR. BY:	SH. OF