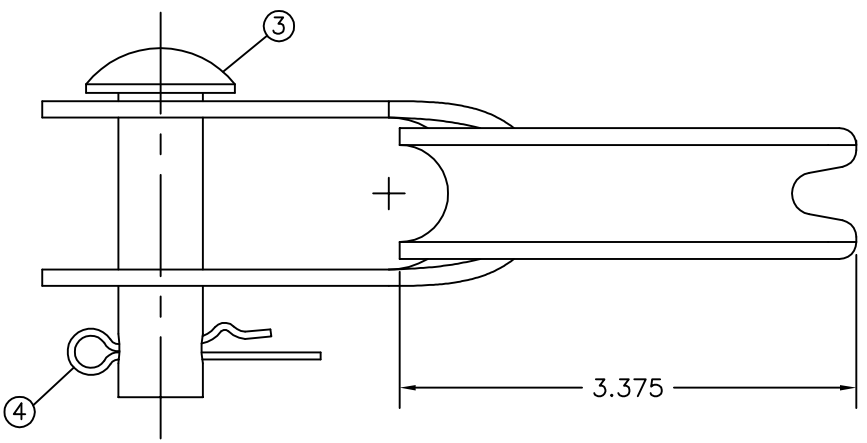


A | B | C | D | E | F

PAPER SIZE	DRAWING NUMBER	
B SIZE	GD-J575	
REV	REVISION DATE	ECO
A	05-04-09	9488

1



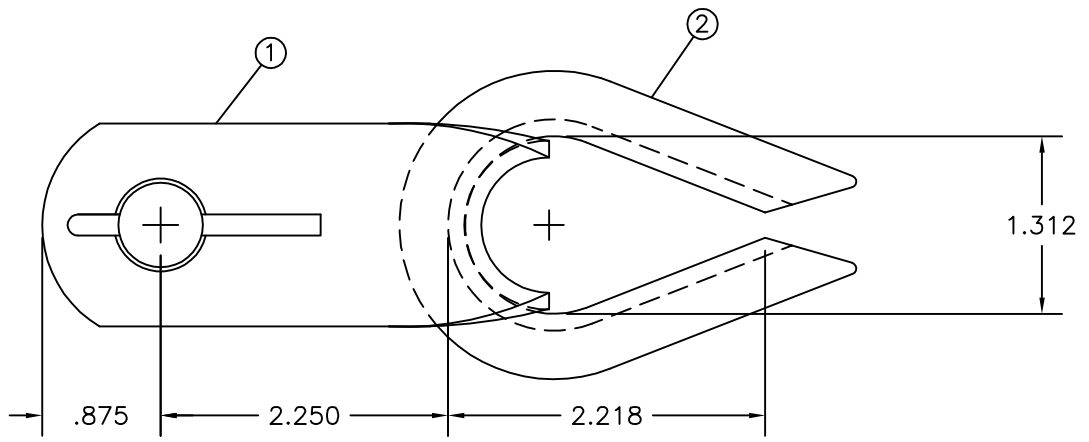
**NOTES:**

- 1) ALL DIMENSIONS ARE REFERENCE AND ARE IN INCHES EXCEPT AS NOTED.
- 2) ALL ITEMS EXCEPT COTTER PIN ARE GALVANIZED FINISH.

2

ITEM	QTY	DESCRIPTION
1	1	.120 X 1-1/2 STEEL CLEVIS BODY
2	1	5/8 WIRE ROPE THIMBLE
3	1	5/8 X 2-1/4 BUTTON HEAD BOLT
4	1	SELF-LOCKING SS COTTER PIN

3



PART NO. F614700

4

This drawing contains confidential information that is the property of MacLean Power, L.L.C. ("MacLean"). Use of MacLean's confidential information without MacLean's express written consent is strictly prohibited and may expose you to legal liability. If you believe that you received this material in error, please destroy it or return it to "MacLean Power, L.L.C., 11411 Addison, Franklin Park, Illinois 60131, USA."

DRAWING-COMPUTER LOCATION  
DRAWING-COMPUTER LOCATION:

TOLERANCES UNLESS SPECIFIED	
inch	
0.XX	_____
0.XXX	_____
ANGLE	_____



**MACLEAN POWER SYSTEMS**  
RELIABLE POWER PRODUCTS  
11411 ADDISON STREET  
FRANKLIN PARK, IL 60131

DRAWN BY	ENGINEER	CHECKER	CATALOG #	SCALE	DESIGN DATE
RRL	RRL	FJS	J575	NTS	04-03-74
DRAWING TITLE / DESCRIPTION					DRAWING NUMBER
CLEVIS THIMBLE					GD-J575