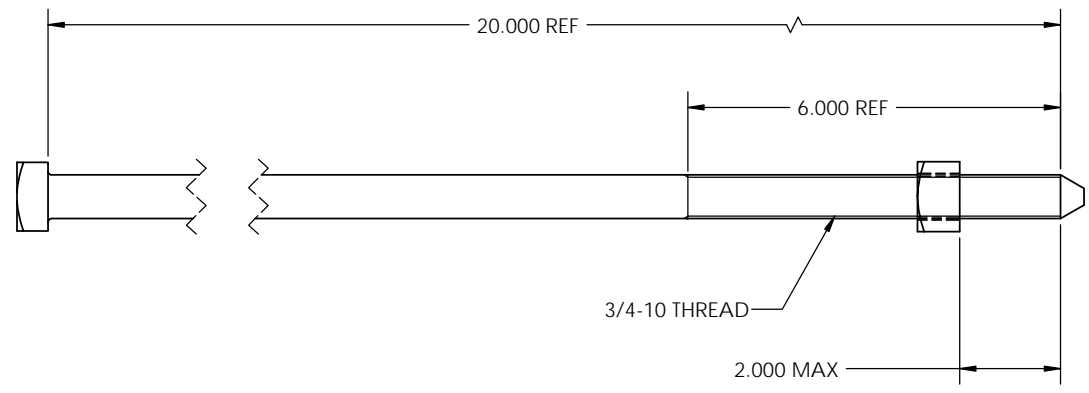
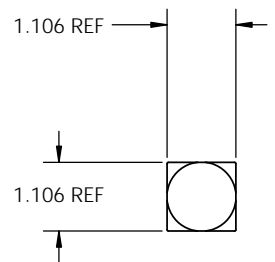


8 7 6 5 4 3 2 1

| | | | |
|------------|------------|-----------------|-------|
| PAPER SIZE | | DRAWING NUMBER | |
| B | | GD-J8920 | |
| REV | REVISED BY | REVISION DATE | ECO # |
| A | PDR | 07-26-12 | 10675 |
| | | | |
| | | | |



- NOTES:**
1. MATERIAL: HOT ROLLED CARBON STEEL
 2. ALL DIMENSIONS ARE REFERENCE AND ARE IN INCHES.
 3. ALL ITEMS ARE HOT DIP GALVANIZED PER ASTM A153.
 4. MINIMUM TENSILE STRENGTH: 20,500 LBS.

| | | | |
|---|--------|---|-----|
| PART NO. F614506 | | DO NOT SCALE DRAWING | |
| DRAWING NUMBER: GD-J8920 | | CAD GENERATED DRAWING DO NOT MANUALLY UPDATE | |
| SHEET NAME: Sheet1 | 1 OF 1 | DESIGN DATE: 07/26/12 | |
| DRAWING DESCRIPTION: BOLT MACH 3/4 X 20 | | DRAWN BY: | PDR |
| DRAWING SCALE: 1:2 | | ENGINEER: | RRL |
| | | APPROVED: | JBB |

CATALOG NO. J8920

**MACLEAN
POWER
SYSTEMS**

11411 ADDISON STREET
FRANKLIN PARK, IL. 60131
TEL: (847) 455-0014 FAX: (847) 455-0029

| | |
|--|--------|
| UNLESS OTHERWISE SPECIFIED DIMENSIONS ARE IN: | |
| INCHES | |
| TOLERANCES ARE: | |
| XX | ± .XX |
| .XXX | ± .XXX |
| X/XX | ± X/XX |
| ANGLES | ± X° |

This drawing contains confidential information that is the property of MacLean Power, L.L.C. ("MacLean"). Use of MacLean's confidential information without MacLean's express written consent is strictly prohibited and may expose you to legal liability. If you believe that you received this material in error, please destroy it or return it to "MacLean Power, L.L.C., 11411 Addison Street, Franklin Park, Illinois 60131, "USA."

8 7 6 5 4 3 2 1