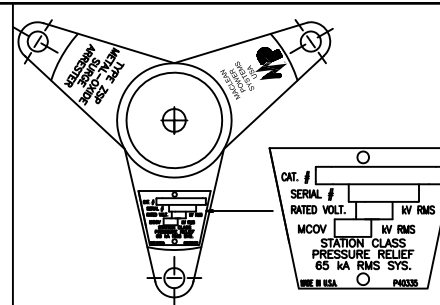
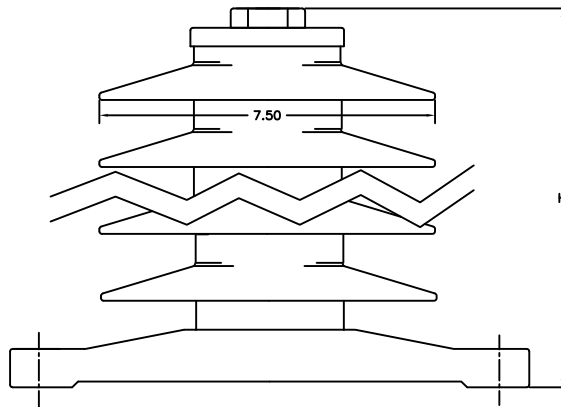


THREE PHASE INSTALLATION LAYOUT



TRIPOD BASE AND NAMEPLATE



PHYSICAL CHARACTERISTICS

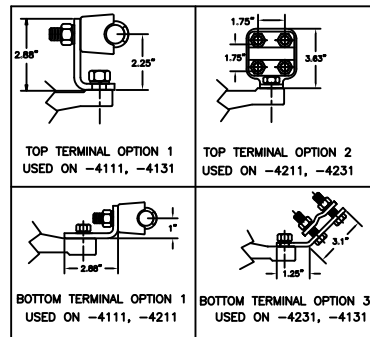
HEIGHT IN./(MM)	CREEP IN./(MM)	WEIGHT LBS./(kg)
18.7/(475)	55.4/(1407)	41/(18.6)

Min. Clearance – in./(mm)		Fault Withstand
A	R	
19/(483)	16/(406)	80 kA

ELECTRICAL CHARACTERISTICS

RATING KV-RMS	MCOV KV-RMS	F.O.W. KV-CREST	MAX SWITCH. KV-CREST
48	39.0	135.0	106.9

MAX DISCHARGE VOLTAGE (KV-CREST)					
1.5 kA	3 kA	5 kA	10 kA	20 kA	40 kA
111.4	116.1	119.9	126.9	135.0	150.0



TOP TERMINAL OPTION 1  
USED ON -4111, -4131

TOP TERMINAL OPTION 2  
USED ON -4211, -4231

BOTTOM TERMINAL OPTION 1  
USED ON -4111, -4211

BOTTOM TERMINAL OPTION 3  
USED ON -4231, -4131

MacLean Power Systems

POLYMER HOUSED GAPLESS METAL OXIDE  
ZSP STATION CLASS ARRESTER  
48 KV RATED  
39.0 KV MCOV

NOT TO SCALE

THIS DRAWING IS THE PROPERTY OF MACLEAN POWER SYSTEMS AND EMBODIES A CONFIDENTIAL PROPRIETARY DESIGN IN WHICH MPS RETAINS ALL PATENTS AND PROPRIETARY RIGHTS, INCLUDING EXCLUSIVE RIGHT OF USE, MANUFACTURE AND SALE. BY ACCEPTING THIS DRAWING, THE RECIPIENT AGREES NOT TO DISCLOSE, REPRODUCE, OR USE ANY INFORMATION CONTAINED HEREIN WITHOUT THE PRIOR WRITTEN CONSENT OF MPS.

DATE 12/20/16

DRAWN JWW

CHECKED

ZSP0048-1XX1

DO NOT SCALE DRAWING

SHEET 1 OF 1