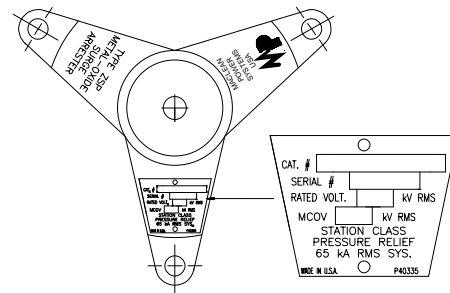
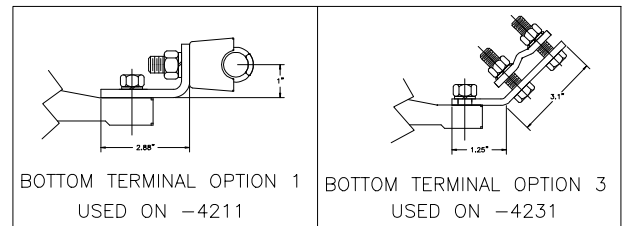


THREE PHASE INSTALLATION LAYOUT



TRIPOD BASE AND NAMEPLATE



BOTTOM TERMINAL OPTION 1
USED ON -4211

BOTTOM TERMINAL OPTION 3
USED ON -4231

PHYSICAL CHARACTERISTICS

HEIGHT IN./(MM)	CREEP IN./(MM)	WEIGHT LBS./(kg)	Min. Clearance - in./(mm)		Fault Withstand
			A	R	
68.4/(1739)	219.9/(5586)	165/(74.8)	75/(1905)	63/(1600)	80 kA

ELECTRICAL CHARACTERISTICS

CATALOG NO.	RATING kV-RMS	MCOV kV-RMS	F.O.W. kV-CREST	MAX SWITCH. kV-CREST	MAX DISCHARGE VOLTAGE (kV-CREST)					
					1.5 kA	3 kA	5 kA	10 kA	20 kA	40 kA
ZSP0210-42X1	210	170.0	562.0	413.0	432.0	454.0	476.0	512.0	565.0	641.0

MACLEAN POWER SYSTEMS
www.maclepower.com

TYPE ZSP POLYMER
STATION CLASS
MOV LIGHTNING ARRESTER
210 KV RATED
170.0 KV MCOV

DATE	02/15/08	ZSP0210-42X1
DRAWN	MTV	
CHECKED		

DO NOT SCALE DRAWING SHEET 1 OF 1

THIS DRAWING IS THE PROPERTY OF MACLEAN POWER SYSTEMS AND EMBODIES A CONFIDENTIAL PROPRIETARY DESIGN IN WHICH MACLEAN POWER SYSTEMS RETAINS ALL PATENTS AND PROPRIETARY RIGHTS, INCLUDING EXCLUSIVE RIGHT OF USE, MANUFACTURE AND SALE. BY ACCEPTING THIS DRAWING, THE RECIPIENT AGREES NOT TO DISCLOSE, REPRODUCE OR USE ANY INFORMATION CONTAINED HEREIN WITHOUT THE PRIOR WRITTEN CONSENT OF MACLEAN POWER SYSTEMS.